



MLS 6700615 Lake Land

\$198,000

Description:

Pickerel Lake - 150' of Lakeshore on a nicely wooded elevated lot with expansive view of the lake. Located in a park like setting with an established neighborhood, the lot offers professional grade dock system with bench seat & steps to it. Ample trees, plenty of privacy, driveway in place, and only minutes to Detroit Lakes. Bring your plans & start your new lake home dream today! Seller will look at a contract for deed.

Additional Details:

| | |
|------------------------|-----------|
| Lot Acres | 1.35 |
| Lot Dimensions | 150 x 269 |
| School District | 22 |
| Taxes | \$1,046 |
| Taxes with Assessments | \$1,046 |
| Tax Year | 2025 |

Additional Features:

Driving Directions:

Detroit Lakes, MN - East on Hwy. #34 to Cty. Hwy. #25. Follow #25 approximately 3.7 miles to Right on W. Pickerel Lake, South on SW Pickerel Lake Rd. to lot between house #32270 & #32348



Listed By:
Spilde Summer Realty

Affinity Real Estate Inc. participates in the Regional Multiple Listing Service of Minnesota, Inc Broker Reciprocity (sm) program, allowing us to display other broker's listings on our website. All properties are subject to prior sale, change or withdrawal.



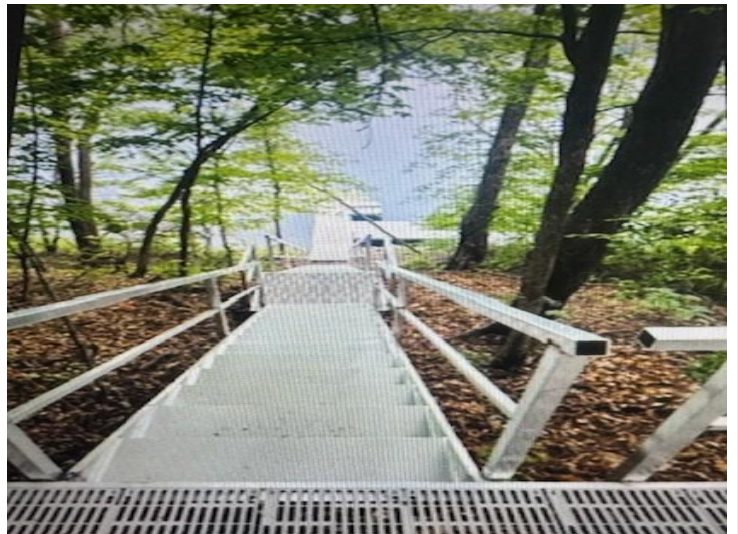
Call Affinity Real Estate

218-237-3333

info@affinityrealestate.com



Affinity Real Estate - 600 Park Avenue South - Park Rapids MN 56470

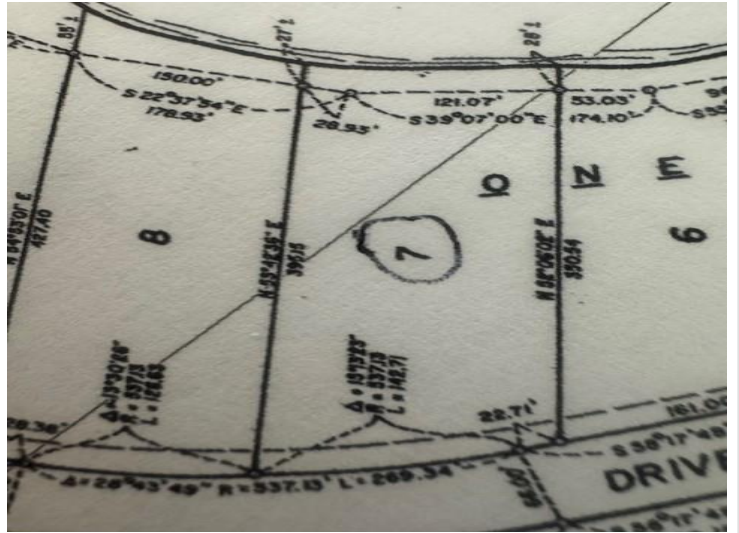


website: www.AffinityRealEstate.com | email: info@affinityrealestate.com | office: 218-237-3333 | fax: 218-237-3377



\$198,000

MLS 6700615 Lake Land
Lot 7 SW Pickerel Lake Rd
Detroit Lakes MN 56501



website: www.AffinityRealEstate.com | email: info@affinityrealestate.com | office: 218-237-3333 | fax: 218-237-3377



\$198,000

MLS 6700615 Lake Land
Lot 7 SW Pickerel Lake Rd
Detroit Lakes MN 56501