



MLS 6700933 Commercial

**\$4,000**

11316 State Highway 210  
Brainerd MN 56401

Status: Hold

**Description:**

Position your retail or office-service business in a premier location along the high-traffic Hwy 210 corridor in East Brainerd! This highly visible and easily accessible property offers everything you need to thrive. The main building features a spacious, open retail or reception area, multiple private offices, and a versatile warehouse with a convenient drive-in door. Additionally, a large storage building with three drive-in doors provides ample space for inventory, equipment, or expansion. Don't miss this outstanding opportunity to grow your business in a sought-after location!

**Additional Details:**

Year Built	2006
Lot Acres	1.1
Lot Dimensions	Approx. 248.02 x 251.53' x 246.74' x 150.91'
Garage Stalls	4
School District	181
Taxes	\$3,368
Taxes with Assessments	\$3,368
Tax Year	2025

**Additional Features:**

**Fuel:** Natural Gas **Heat:** Forced Air, Space Heater

**Driving Directions:**

From Hwy 210 (Washington Street) / Hwy 371 (S 6th Street) intersection in Brainerd - East on Hwy 210 approx. 2.2 miles to the property on the West at 11316



Listed By:  
Close-Converse Commercial Prop

Affinity Real Estate Inc. participates in the Regional Multiple Listing Service of Minnesota, Inc Broker Reciprocity (sm) program, allowing us to display other broker's listings on our website. All properties are subject to prior sale, change or withdrawal.



**Call Affinity Real Estate**

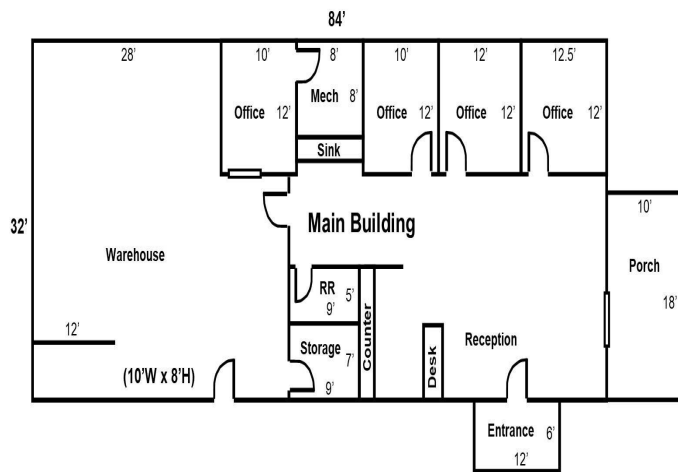
**218-237-3333**

**info@affinityrealestate.com**



**Affinity Real Estate - 600 Park Avenue South - Park Rapids MN 56470**





website: [www.AffinityRealEstate.com](http://www.AffinityRealEstate.com) | email: [info@affinityrealestate.com](mailto:info@affinityrealestate.com) | office: 218-237-3333 | fax: 218-237-3377



**\$4,000**  
 MLS 6700933 Commercial  
 11316 State Highway 210  
 Brainerd MN 56401



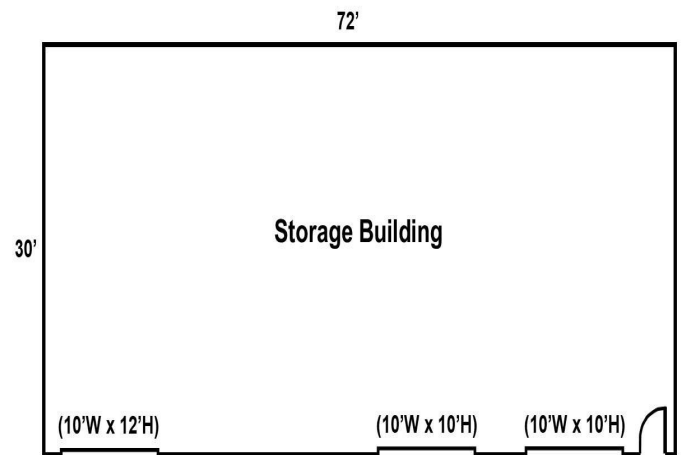


website: [www.AffinityRealEstate.com](http://www.AffinityRealEstate.com) | email: [info@affinityrealestate.com](mailto:info@affinityrealestate.com) | office: 218-237-3333 | fax: 218-237-3377



**\$4,000**  
 MLS 6700933 Commercial  
 11316 State Highway 210  
 Brainerd MN 56401





website: [www.AffinityRealEstate.com](http://www.AffinityRealEstate.com) | email: [info@affinityrealestate.com](mailto:info@affinityrealestate.com) | office: 218-237-3333 | fax: 218-237-3377

**Affinity**  
REAL ESTATE INC

**\$4,000**  
MLS 6700933 Commercial  
11316 State Highway 210  
Brainerd MN 56401