



MLS 6701228 Residential

**\$328,000**

1,164 sq ft  
2 bedrooms  
2 baths

1615 30th Street  
Bemidji MN 56601

Status: Active

**Description:**

Immaculate one-level living! Perfect blend of comfort and style in this 2BR/2BA end unit, ideally located in a fine neighborhood. Enjoy the convenience of being close to shopping, medical, banking & restaurants. The open layout features a spacious living area, accentuated by southwestern-facing windows that bathe the interiors in natural light. Key features include a modern kitchen equipped with stainless steel appliances, upgraded cabinetry, and a large island complete with a breakfast bar. The primary suite boasts a generously sized walk-in shower with a glass door. Step outside to your concrete patio, ideal for BBQs and outdoor furniture. Enjoy a hassle-free lifestyle with no maintenance exterior living, as the HOA takes care of snow removal, landscaping upkeep, and other helpful tasks. Additionally, the unit offers a double finished heated garage for added convenience. The community amenities include access to an exercise room, meeting room, and a kitchen—perfect for hosting gatherings. Don't miss the opportunity to experience this beautifully designed home!

**Additional Details:**

Year Built	2017
Lot Acres	0.04
Lot Dimensions	42x45
Garage Stalls	2
School District	31
Taxes	\$3,252
Taxes with Assessments	\$3,252
Tax Year	2025

**Additional Features:**

**Basement:** Slab **Fuel:** Natural Gas **Garage:** 2 **Heat:** Forced Air **Sewer:** City Sewer/Connected **Water:** City Water/Connected **Air Conditioning:** Central Air

**Driving Directions:**

North on Irvine Ave, left on 30th St, right into Northridge Cottages. House on the left at the end.



Listed By:  
Century 21 Dickinson

Affinity Real Estate Inc. participates in the Regional Multiple Listing Service of Minnesota, Inc Broker Reciprocity (sm) program, allowing us to display other broker's listings on our website. All properties are subject to prior sale, change or withdrawal.



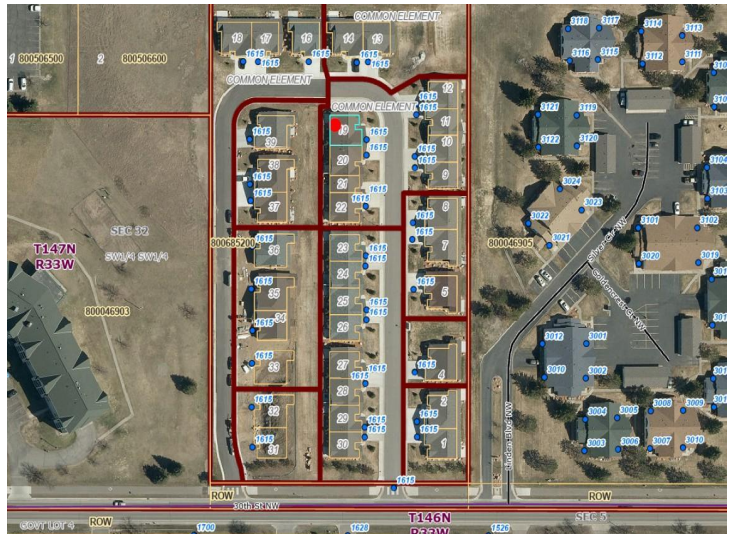
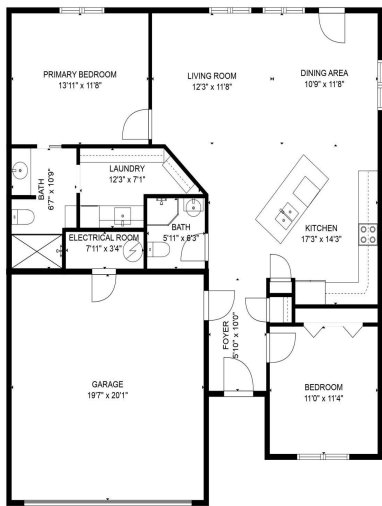
**Call Affinity Real Estate**

**218-237-3333**

**[info@affinityrealestate.com](mailto:info@affinityrealestate.com)**



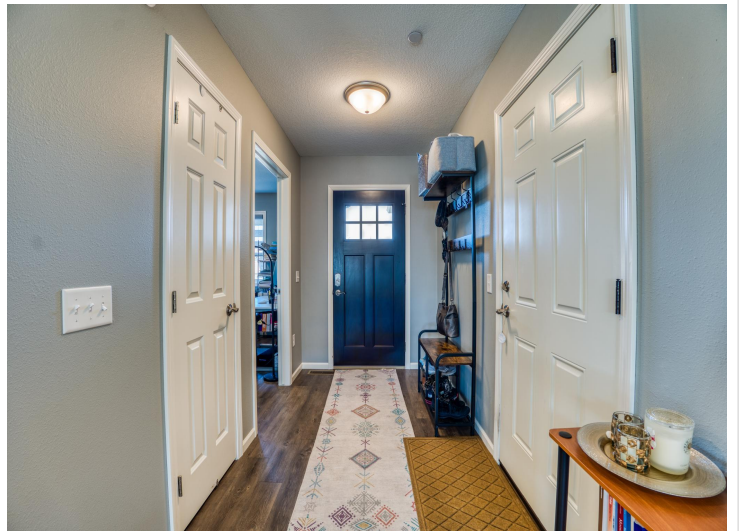
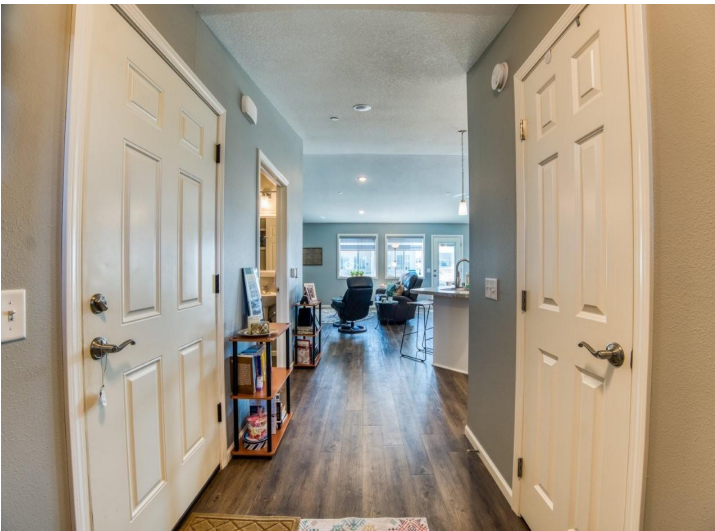
**Affinity Real Estate - 600 Park Avenue South - Park Rapids MN 56470**



website: [www.AffinityRealEstate.com](http://www.AffinityRealEstate.com) | email: [info@affinityrealestate.com](mailto:info@affinityrealestate.com) | office: 218-237-3333 | fax: 218-237-3377

**Affinity**  
REAL ESTATE INC

**\$328,000**  
MLS 6701228 Residential  
1615 30th Street  
Bemidji MN 56601



website: [www.AffinityRealEstate.com](http://www.AffinityRealEstate.com) | email: [info@affinityrealestate.com](mailto:info@affinityrealestate.com) | office: 218-237-3333 | fax: 218-237-3377



**\$328,000**  
 MLS 6701228 Residential  
 1615 30th Street  
 Bemidji MN 56601



website: [www.AffinityRealEstate.com](http://www.AffinityRealEstate.com) | email: [info@affinityrealestate.com](mailto:info@affinityrealestate.com) | office: 218-237-3333 | fax: 218-237-3377

**Affinity**  
REAL ESTATE INC

**\$328,000**  
MLS 6701228 Residential  
1615 30th Street  
Bemidji MN 56601



website: [www.AffinityRealEstate.com](http://www.AffinityRealEstate.com) | email: [info@affinityrealestate.com](mailto:info@affinityrealestate.com) | office: 218-237-3333 | fax: 218-237-3377



**\$328,000**  
 MLS 6701228 Residential  
 1615 30th Street  
 Bemidji MN 56601



website: [www.AffinityRealEstate.com](http://www.AffinityRealEstate.com) | email: [info@affinityrealestate.com](mailto:info@affinityrealestate.com) | office: 218-237-3333 | fax: 218-237-3377

**Affinity**  
REAL ESTATE INC

**\$328,000**  
MLS 6701228 Residential  
1615 30th Street  
Bemidji MN 56601



website: [www.AffinityRealEstate.com](http://www.AffinityRealEstate.com) | email: [info@affinityrealestate.com](mailto:info@affinityrealestate.com) | office: 218-237-3333 | fax: 218-237-3377



**\$328,000**  
MLS 6701228 Residential  
1615 30th Street  
Bemidji MN 56601