



MLS 6701325 Lake Home

**\$599,000**

3,339 sq ft  
4 bedrooms  
3 baths

15721 St Olaf Road  
Battle Lake MN 56515

Waterfront: Long Lake (Saint Olaf  
Twp.)

Status: Pending

#### Description:

Beautiful red cedar log home on Long Lake! Spectacular inside and out. This year-round home is on a point with water to the east and south. Gorgeous morning sunrises and evening sunsets. Main floor features open and bright 2-story living room with full wall of windows, wood stove, hardwood floors, red cedar walls, bedroom, and a full bathroom. Updated kitchen with beautiful lake views. Laundry closet in the kitchen and a wrap-around deck. Upstairs has a large, open loft overlooking the living room, a spacious den or craft room, 2 large bedrooms with vaulted ceilings and a 3/4 bathroom. Basement is divided into a family room, bedroom, 3/4 bathroom, a 2nd laundry room, workshop area, storage room and a patio under the deck (rooms are being used but are not 100% finished). Wonderful private lot with beautiful views in a peaceful setting!

#### Additional Details:

Year Built	1993
Lot Acres	0.84
Lot Dimensions	267 x 149 approx.
Garage Stalls	2
School District	542
Taxes	\$3,002
Taxes with Assessments	\$3,002
Tax Year	2025

#### Additional Features:

**Basement:** Block, Daylight/Lookout Windows **Fuel:** Propane, Wood **Garage:** 2 **Heat:** Forced Air, Heat Pump, Radiant Floor, Wood Stove  
**Sewer:** Tank with Drainage Field **Water:** Drilled, Private, Well **Air Conditioning:** Central Air, Heat Pump

#### Driving Directions:

From 160th St. and St. Olaf Road, go south on St. Olaf Road. Follow signs.



Listed By:  
Century 21 Atwood

Affinity Real Estate Inc. participates in the Regional Multiple Listing Service of Minnesota, Inc Broker Reciprocity (sm) program, allowing us to display other broker's listings on our website. All properties are subject to prior sale, change or withdrawal.



Call Affinity Real Estate

**218-237-3333**

[info@affinityrealestate.com](mailto:info@affinityrealestate.com)



Affinity Real Estate - 600 Park Avenue South - Park Rapids MN 56470





website: [www.AffinityRealEstate.com](http://www.AffinityRealEstate.com) | email: [info@affinityrealestate.com](mailto:info@affinityrealestate.com) | office: 218-237-3333 | fax: 218-237-3377

**Affinity**  
REAL ESTATE INC

**\$599,000**

MLS 6701325 Lake Home  
15721 St Olaf Road  
Battle Lake MN 56515





website: [www.AffinityRealEstate.com](http://www.AffinityRealEstate.com) | email: [info@affinityrealestate.com](mailto:info@affinityrealestate.com) | office: 218-237-3333 | fax: 218-237-3377



**\$599,000**  
 MLS 6701325 Lake Home  
 15721 St Olaf Road  
 Battle Lake MN 56515





website: [www.AffinityRealEstate.com](http://www.AffinityRealEstate.com) | email: [info@affinityrealestate.com](mailto:info@affinityrealestate.com) | office: 218-237-3333 | fax: 218-237-3377

**Affinity**  
REAL ESTATE INC

**\$599,000**

MLS 6701325 Lake Home  
15721 St Olaf Road  
Battle Lake MN 56515





website: [www.AffinityRealEstate.com](http://www.AffinityRealEstate.com) | email: [info@affinityrealestate.com](mailto:info@affinityrealestate.com) | office: 218-237-3333 | fax: 218-237-3377

**Affinity**  
REAL ESTATE INC

**\$599,000**  
MLS 6701325 Lake Home  
15721 St Olaf Road  
Battle Lake MN 56515





website: [www.AffinityRealEstate.com](http://www.AffinityRealEstate.com) | email: [info@affinityrealestate.com](mailto:info@affinityrealestate.com) | office: 218-237-3333 | fax: 218-237-3377

**Affinity**  
REAL ESTATE INC

**\$599,000**

MLS 6701325 Lake Home  
15721 St Olaf Road  
Battle Lake MN 56515





website: [www.AffinityRealEstate.com](http://www.AffinityRealEstate.com) | email: [info@affinityrealestate.com](mailto:info@affinityrealestate.com) | office: 218-237-3333 | fax: 218-237-3377

**Affinity**  
REAL ESTATE INC

**\$599,000**  
MLS 6701325 Lake Home  
15721 St Olaf Road  
Battle Lake MN 56515



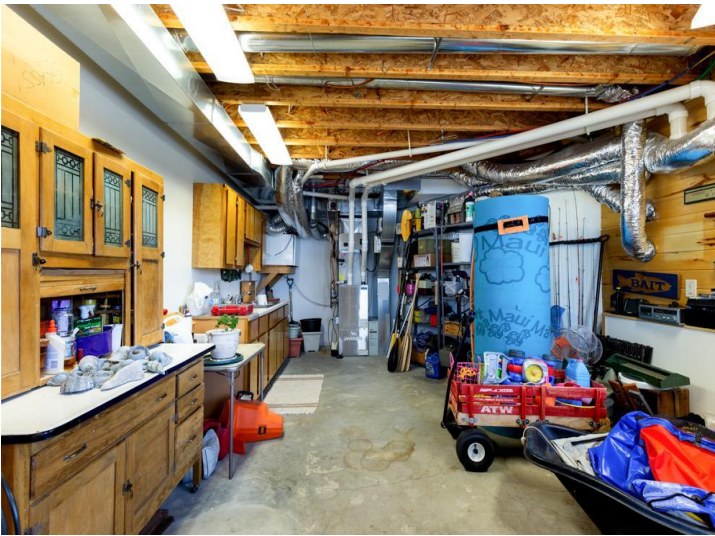


website: [www.AffinityRealEstate.com](http://www.AffinityRealEstate.com) | email: [info@affinityrealestate.com](mailto:info@affinityrealestate.com) | office: 218-237-3333 | fax: 218-237-3377

**Affinity**  
REAL ESTATE INC

**\$599,000**  
MLS 6701325 Lake Home  
15721 St Olaf Road  
Battle Lake MN 56515





website: [www.AffinityRealEstate.com](http://www.AffinityRealEstate.com) | email: [info@affinityrealestate.com](mailto:info@affinityrealestate.com) | office: 218-237-3333 | fax: 218-237-3377

**Affinity**  
REAL ESTATE INC

**\$599,000**  
MLS 6701325 Lake Home  
15721 St Olaf Road  
Battle Lake MN 56515