



MLS 6701333 Residential

\$375,000

2,496 sq ft
3 bedrooms
3 baths

37263 Pine Cone Drive
Menahga MN 56464

Status: Active

Description:

Great country location for this 3 bed, 3 bath home, just East of Menahga. This 15 year old home has been well maintained and shows very well. Amenities include central air, insulated attached garage, in-floor and propane forced-air heating, tiles floors and sheetrock in lower level, 200 Amp service in house and pole building, and much more. Den and office in lower level have egress windows and have been used as bedrooms. Property also includes a 30x40 insulated/heated pole building with an 18x40 3-sided lean-to with concrete floor. 80 gallon air compressor and car hoist will be left with the property. Schedule your showing for this awesome property today!

Additional Details:

Year Built	2010
Lot Acres	5.47
Lot Dimensions	Irregular
Garage Stalls	7
School District	821
Taxes	\$2,914
Taxes with Assessments	\$2,914
Tax Year	2025

Additional Features:

Fuel: Electric, Propane **Heat:** Forced Air, Radiant Floor

Driving Directions:

From 71/34 intersection in Park Rapids go South on 71 to Menahga, turn left on 1st Street NE in Menahga. Follow 1.25 miles to a left on Pine Cone Drive. Property will be on the right.



Listed By:
Wolff & Simon Real Estate

Affinity Real Estate Inc. participates in the Regional Multiple Listing Service of Minnesota, Inc Broker Reciprocity (sm) program, allowing us to display other broker's listings on our website. All properties are subject to prior sale, change or withdrawal.



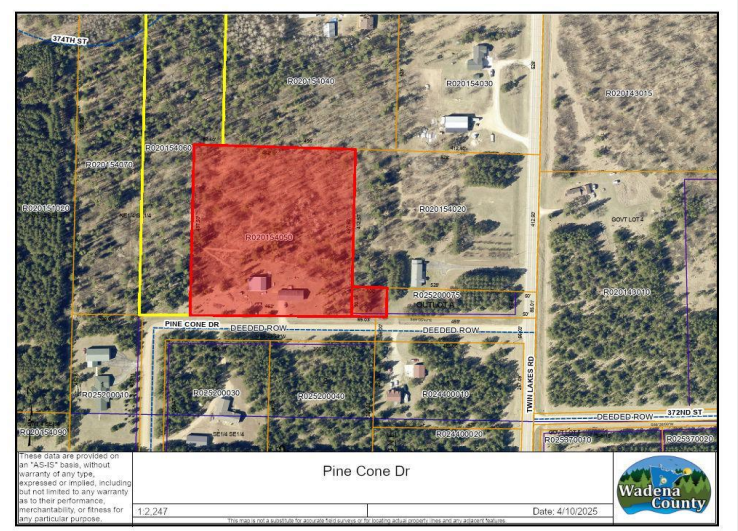
Call Affinity Real Estate

218-237-3333

info@affinityrealestate.com



Affinity Real Estate - 600 Park Avenue South - Park Rapids MN 56470



website: www.AffinityRealEstate.com | email: info@affinityrealestate.com | office: 218-237-3333 | fax: 218-237-3377



\$375,000
 MLS 6701333 Residential
 37263 Pine Cone Drive
 Menahga MN 56464

website: www.AffinityRealEstate.com | email: info@affinityrealestate.com | office: 218-237-3333 | fax:218-237-3377



\$375,000

MLS 6701333 Residential
37263 Pine Cone Drive
Menahga MN 56464

website: www.AffinityRealEstate.com | email: info@affinityrealestate.com | office: 218-237-3333 | fax:218-237-3377



\$375,000

MLS 6701333 Residential
37263 Pine Cone Drive
Menahga MN 56464

website: www.AffinityRealEstate.com | email: info@affinityrealestate.com | office: 218-237-3333 | fax:218-237-3377



\$375,000

MLS 6701333 Residential
37263 Pine Cone Drive
Menahga MN 56464

website: www.AffinityRealEstate.com | email: info@affinityrealestate.com | office: 218-237-3333 | fax: 218-237-3377



\$375,000

MLS 6701333 Residential
37263 Pine Cone Drive
Menahga MN 56464

website: www.AffinityRealEstate.com | email: info@affinityrealestate.com | office: 218-237-3333 | fax: 218-237-3377



\$375,000

MLS 6701333 Residential
37263 Pine Cone Drive
Menahga MN 56464