



MLS 6701595 Lake Home

\$261,900

624 sq ft
1 bedrooms
1 baths

17425 Delta Drive
Nevis MN 56467

Waterfront: Loon Lake (White Oak
Twp.)

Status: Pending

Description:

199 feet of sandy bottom and great swimming. 2.2 acres of wooded privacy. A cute, year round cabin, fully renovated in 2017. Excellent views of beautiful Loon Lake. A quiet lake with minimal development. Located just 6 miles Southeast of Nevis, MN. A pristine lake front get away just in time for the Summer season.

Additional Details:

Year Built	1992
Lot Acres	2.25
Lot Dimensions	199x521x534x165
School District	113
Taxes	\$1,406
Taxes with Assessments	\$1,406
Tax Year	2025

Additional Features:

Fuel: Electric **Heat:** Radiant

Driving Directions:

From Hwy 71/34 in Park Rapids, go East on 34 just before Nevis and turn right on Co Road 33. Go 1.5 miles to Co Road 119, then go right and follow for 4.5 miles to Delta Drive. Left on to the property.



Listed By:
Coldwell Banker Crown Realtors

Affinity Real Estate Inc. participates in the Regional Multiple Listing Service of Minnesota, Inc Broker Reciprocity (sm) program, allowing us to display other broker's listings on our website. All properties are subject to prior sale, change or withdrawal.



Call Affinity Real Estate

218-237-3333

info@affinityrealestate.com



Affinity Real Estate - 600 Park Avenue South - Park Rapids MN 56470



website: www.AffinityRealEstate.com | email: info@affinityrealestate.com | office: 218-237-3333 | fax: 218-237-3377

Affinity
REAL ESTATE INC

\$261,900
MLS 6701595 Lake Home
17425 Delta Drive
Nevis MN 56467



website: www.AffinityRealEstate.com | email: info@affinityrealestate.com | office: 218-237-3333 | fax: 218-237-3377

Affinity
REAL ESTATE INC

\$261,900
MLS 6701595 Lake Home
17425 Delta Drive
Nevis MN 56467



website: www.AffinityRealEstate.com | email: info@affinityrealestate.com | office: 218-237-3333 | fax: 218-237-3377

Affinity
REAL ESTATE INC

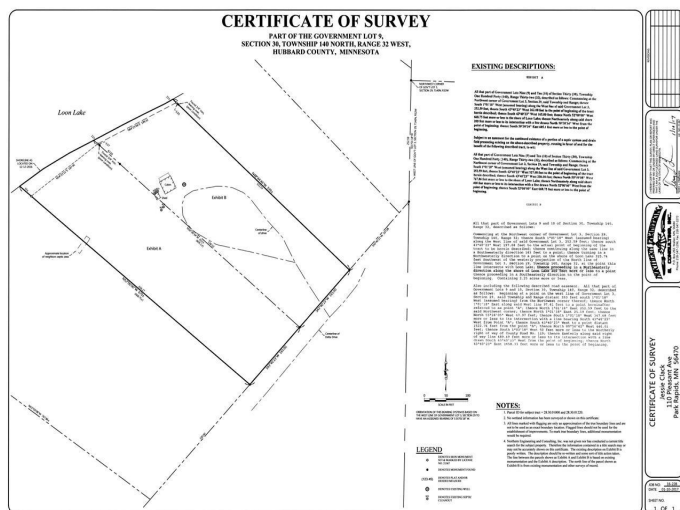
\$261,900
MLS 6701595 Lake Home
17425 Delta Drive
Nevis MN 56467



website: www.AffinityRealEstate.com | email: info@affinityrealestate.com | office: 218-237-3333 | fax: 218-237-3377

Affinity
REAL ESTATE INC

\$261,900
MLS 6701595 Lake Home
17425 Delta Drive
Nevis MN 56467



website: www.AffinityRealEstate.com | email: info@affinityrealestate.com | office: 218-237-3333 | fax: 218-237-3377



\$261,900
MLS 6701595 Lake Home
17425 Delta Drive
Nevis MN 56467