



MLS 6701645 Lake Land

\$359,000

Description:

One of the last building lots on Lake Ida to build your dream home. Enjoy the beautiful sunsets after swimming, boating, and fishing off your property.

Additional Details:

| | |
|------------------------|-----------------------|
| Lot Acres | 0.91 |
| Lot Dimensions | 102 x 185 x 115 x 320 |
| School District | 206 |
| Taxes | \$2,218 |
| Taxes with Assessments | \$2,252 |
| Tax Year | 2024 |

Additional Features:

Driving Directions:

County Road 34 to sign on the left.



Listed By:
Coldwell Banker Crown Realtors

Affinity Real Estate Inc. participates in the Regional Multiple Listing Service of Minnesota, Inc Broker Reciprocity (sm) program, allowing us to display other broker's listings on our website. All properties are subject to prior sale, change or withdrawal.



Call Affinity Real Estate

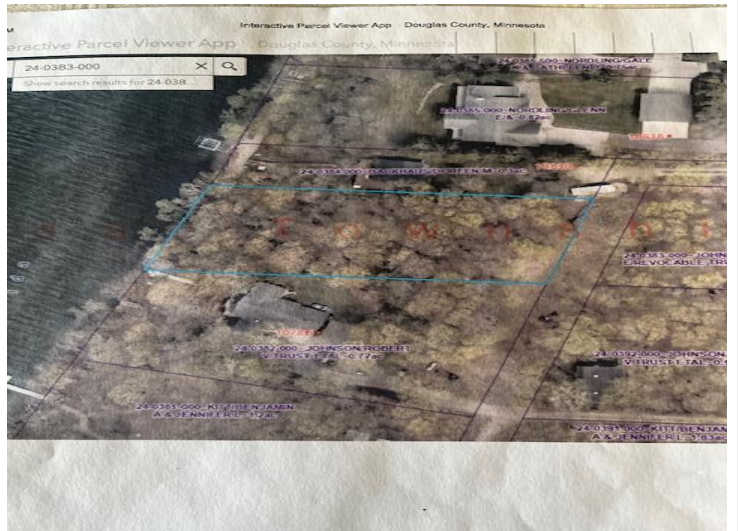
218-237-3333

info@affinityrealestate.com

MLS



Affinity Real Estate - 600 Park Avenue South - Park Rapids MN 56470



website: www.AffinityRealEstate.com | email: info@affinityrealestate.com | office: 218-237-3333 | fax: 218-237-3377



\$359,000
 MLS 6701645 Lake Land
 xxxx County Road 34
 Alexandria MN 56308

website: www.AffinityRealEstate.com | email: info@affinityrealestate.com | office: 218-237-3333 | fax:218-237-3377



\$359,000

MLS 6701645 Lake Land
xxxx County Road 34
Alexandria MN 56308