



MLS 6701860 Lake Home

\$925,000

4,604 sq ft
6 bedrooms
4 baths

11857 Maplewood Drive
East Gull Lake MN 56401

Waterfront: Dade

Status: Active

Description:

Welcome to this impeccably maintained and professionally designed East Gull Lake home! Surrounded by scenic walking paths that connect you to nearby resorts, world-class golf courses, and fine dining, this home blends luxury living with outdoor adventure. The beautifully landscaped and private yard features multiple fire pits, a children's play area, a well-appointed garden, and a natural pond with a pump system—all of which can be enjoyed from the front or back decks. Inside you will find over 4,600 finished sq ft with high-end finishes throughout. The main level offers ultimate convenience with a spacious laundry/mudroom, and a sun-drenched four-season porch. The chef's kitchen is a dream for entertaining, while the main-floor primary suite provides luxurious comfort and privacy. The open-concept design continues into the walkout lower level, perfect for gatherings, complete with an infrared sauna, fire-place, and abundant storage space. Above the garage, a bonus mother-in-law suite adds even more flexibility for guests, or extended family. With deeded access to Dade Lake, this rare property offers a winning combination of elegance, functionality, and natural beauty.

Additional Details:

Year Built	2017
Lot Acres	1.9
Lot Dimensions	140x490x440x268
Garage Stalls	3
School District	181
Taxes	\$4,886
Taxes with Assessments	\$4,886
Tax Year	2025

Additional Features:

Basement: Block, Drain Tiled, Egress Window(s), Finished, Full, ICFs (Insulated Concrete Forms), Sump Pump, Walkout **Fuel:** Natural Gas
Garage: 3 **Heat:** Boiler, Ductless Mini-Split, Forced Air, Fireplace(s), Radiant Floor **Sewer:** City Sewer/Connected **Water:** Well **Air Conditioning:** Central Air

Driving Directions:

West on 210, to North on Cty Rd 18, to left onto Maplewood Dr, home on left. See sign.



Listed By:
LPT Realty, LLC

Affinity Real Estate Inc. participates in the Regional Multiple Listing Service of Minnesota, Inc Broker Reciprocity (sm) program, allowing us to display other broker's listings on our website. All properties are subject to prior sale, change or withdrawal.



Call Affinity Real Estate

218-237-3333

info@affinityrealestate.com



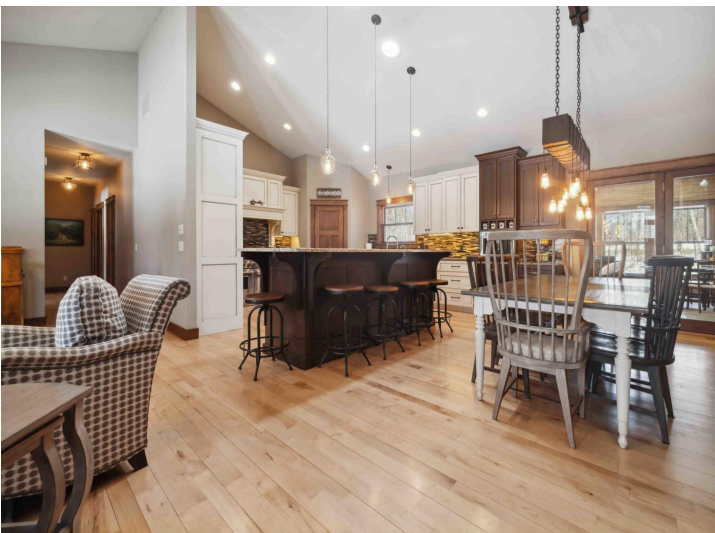
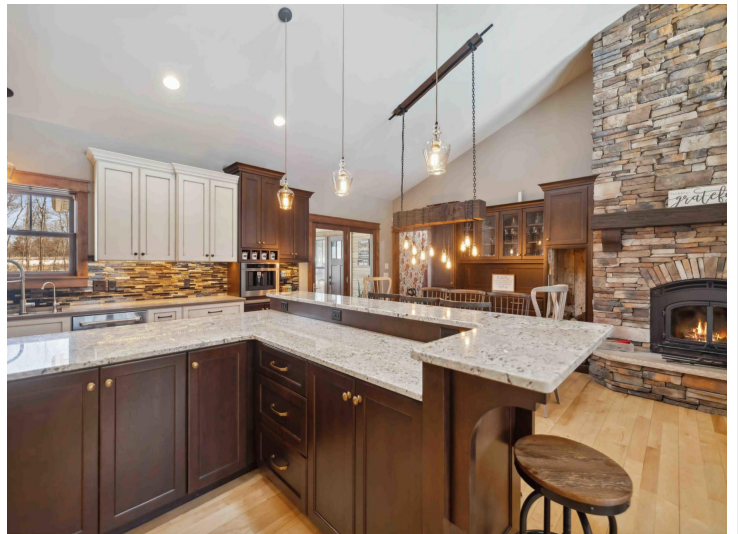
Affinity Real Estate - 600 Park Avenue South - Park Rapids MN 56470



website: www.AffinityRealEstate.com | email: info@affinityrealestate.com | office: 218-237-3333 | fax: 218-237-3377

Affinity
REAL ESTATE INC

\$925,000
MLS 6701860 Lake Home
11857 Maplewood Drive
East Gull Lake MN 56401



website: www.AffinityRealEstate.com | email: info@affinityrealestate.com | office: 218-237-3333 | fax: 218-237-3377

Affinity
REAL ESTATE INC

\$925,000
MLS 6701860 Lake Home
11857 Maplewood Drive
East Gull Lake MN 56401



website: www.AffinityRealEstate.com | email: info@affinityrealestate.com | office: 218-237-3333 | fax: 218-237-3377

Affinity
REAL ESTATE INC

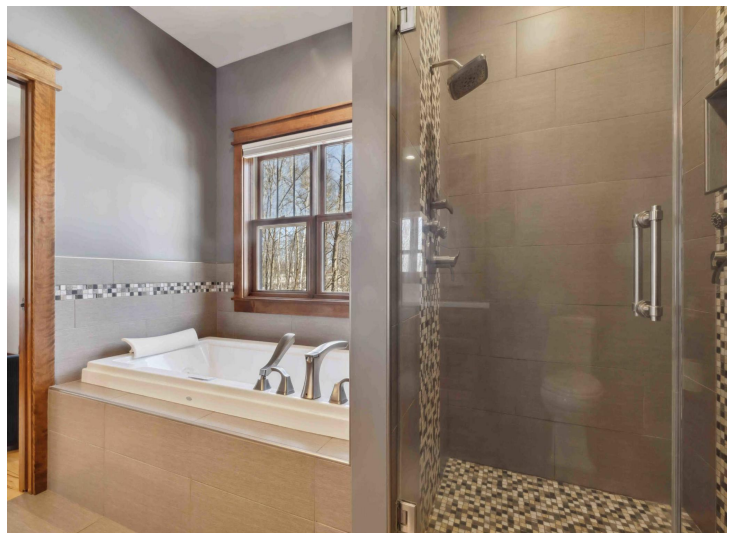
\$925,000
MLS 6701860 Lake Home
11857 Maplewood Drive
East Gull Lake MN 56401



website: www.AffinityRealEstate.com | email: info@affinityrealestate.com | office: 218-237-3333 | fax: 218-237-3377

Affinity
REAL ESTATE INC

\$925,000
MLS 6701860 Lake Home
11857 Maplewood Drive
East Gull Lake MN 56401



website: www.AffinityRealEstate.com | email: info@affinityrealestate.com | office: 218-237-3333 | fax: 218-237-3377

Affinity
REAL ESTATE INC

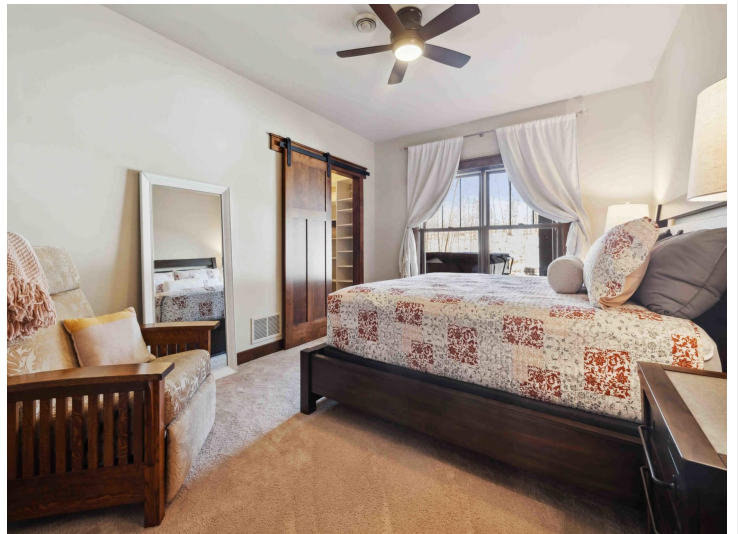
\$925,000
MLS 6701860 Lake Home
11857 Maplewood Drive
East Gull Lake MN 56401



website: www.AffinityRealEstate.com | email: info@affinityrealestate.com | office: 218-237-3333 | fax: 218-237-3377

Affinity
REAL ESTATE INC

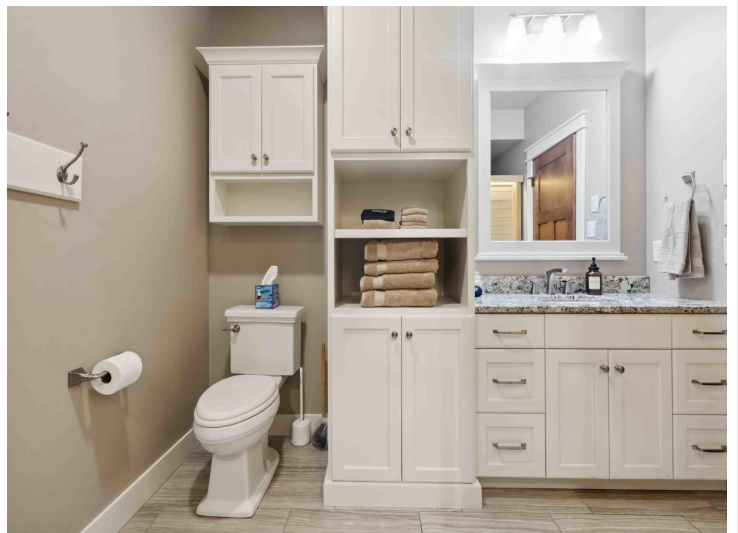
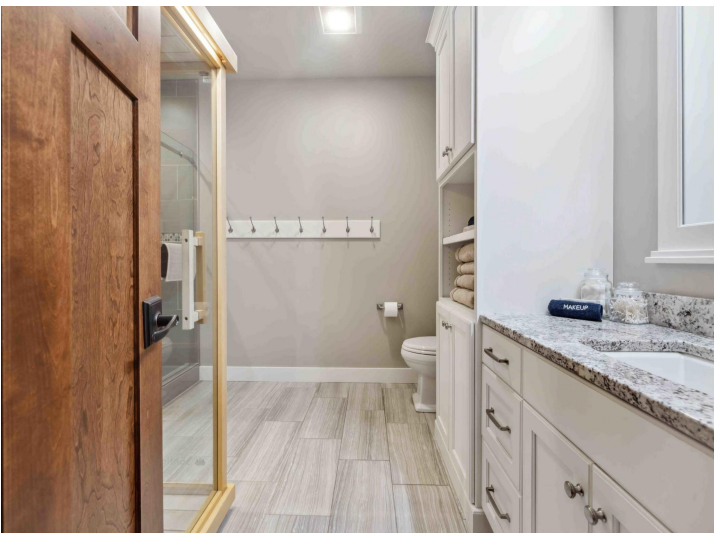
\$925,000
MLS 6701860 Lake Home
11857 Maplewood Drive
East Gull Lake MN 56401



website: www.AffinityRealEstate.com | email: info@affinityrealestate.com | office: 218-237-3333 | fax: 218-237-3377



\$925,000
 MLS 6701860 Lake Home
 11857 Maplewood Drive
 East Gull Lake MN 56401



website: www.AffinityRealEstate.com | email: info@affinityrealestate.com | office: 218-237-3333 | fax: 218-237-3377



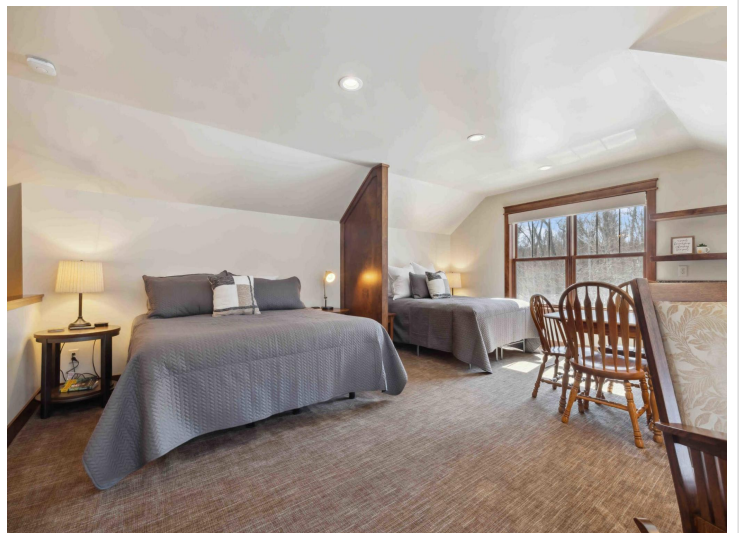
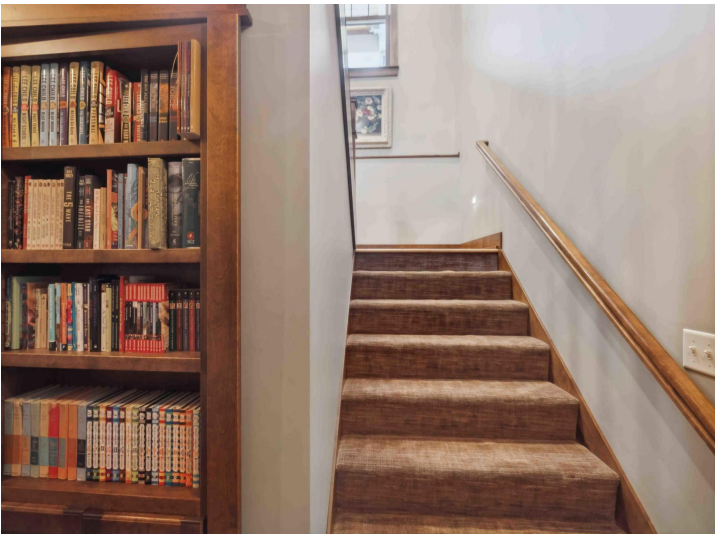
\$925,000
 MLS 6701860 Lake Home
 11857 Maplewood Drive
 East Gull Lake MN 56401



website: www.AffinityRealEstate.com | email: info@affinityrealestate.com | office: 218-237-3333 | fax: 218-237-3377

Affinity
REAL ESTATE INC

\$925,000
MLS 6701860 Lake Home
11857 Maplewood Drive
East Gull Lake MN 56401



website: www.AffinityRealEstate.com | email: info@affinityrealestate.com | office: 218-237-3333 | fax: 218-237-3377

Affinity
REAL ESTATE INC

\$925,000
MLS 6701860 Lake Home
11857 Maplewood Drive
East Gull Lake MN 56401



website: www.AffinityRealEstate.com | email: info@affinityrealestate.com | office: 218-237-3333 | fax: 218-237-3377

Affinity
REAL ESTATE INC

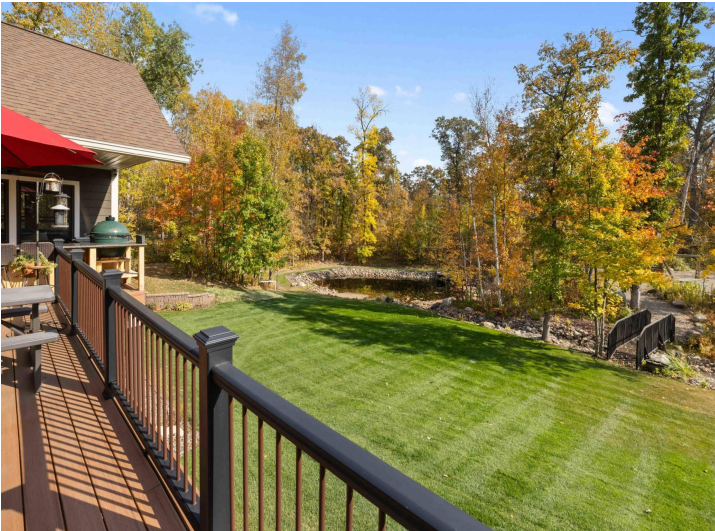
\$925,000
MLS 6701860 Lake Home
11857 Maplewood Drive
East Gull Lake MN 56401



website: www.AffinityRealEstate.com | email: info@affinityrealestate.com | office: 218-237-3333 | fax: 218-237-3377



\$925,000
 MLS 6701860 Lake Home
 11857 Maplewood Drive
 East Gull Lake MN 56401



website: www.AffinityRealEstate.com | email: info@affinityrealestate.com | office: 218-237-3333 | fax: 218-237-3377

Affinity
REAL ESTATE INC

\$925,000
MLS 6701860 Lake Home
11857 Maplewood Drive
East Gull Lake MN 56401



website: www.AffinityRealEstate.com | email: info@affinityrealestate.com | office: 218-237-3333 | fax: 218-237-3377



\$925,000
 MLS 6701860 Lake Home
 11857 Maplewood Drive
 East Gull Lake MN 56401



website: www.AffinityRealEstate.com | email: info@affinityrealestate.com | office: 218-237-3333 | fax: 218-237-3377



\$925,000

MLS 6701860 Lake Home
11857 Maplewood Drive
East Gull Lake MN 56401