



MLS 6702196 Residential

\$290,000

1,366 sq ft
3 bedrooms
2 baths

37406 County Highway 35
Dent MN 56528

Status: Active

Description:

Country Charm Meets Lake Life – Without the Big Price tag. Step into simple living with this cozy, updated 1½-story farmhouse on 2.5 peaceful acres—just far enough out to breathe easy, but close enough to hit the lake before lunch!

3 Bedrooms | 2 Bathrooms | Spacious, Clean Basement for All Your Gear

Tucked back from Highway 35, this home offers privacy and quiet, fresh air, and room to roam. Inside, it's all rustic charm with the right updates to keep life comfortable and easy. Home also has a 2 stall attached garage and 3 season porch to keep the bugs away.

16x22 Heated Workshop – Perfect for hobbies, projects, or tinkering the days away

30x40 Pole Barn – Store your boat, camper, toys, or turn it into a dream hangout spot

Just 1.4 miles to Dead Lake public access and 1.7 miles to Star Lake public access—you're minutes from fishing, boating, and soaking in that laid-back lake vibe without the lakefront price tag. Take a trip down Beaver Dam Road and you can pull right over and swim in one of the nicest public spots!!

Whether you're looking for a full-time homestead, a weekend retreat, or a spot to build your own legacy, this one checks all the boxes.

Come walk the land, feel the breeze, and see why folks fall in love with places like this.

Agent related to seller.

Additional Details:

Year Built	1911
Lot Acres	2.5
Lot Dimensions	irregular
Garage Stalls	2
School District	549
Taxes	\$1,460
Taxes with Assessments	\$1,460
Tax Year	2024

Additional Features:

Basement: Block, Drain Tiled, Storage Space **Fuel:** Propane **Garage:** 2 **Heat:** Forced Air **Sewer:** Septic System Compliant - Yes **Water:** Private,

Listing: Central Air
Listed By:
Park Co., REALTORS®

google maps right on County Highway 35
Affinity Real Estate Inc. participates in the Regional Multiple Listing Service of Minnesota, Inc Broker Reciprocity (sm) program, allowing us to display other broker's listings on our website. All properties are subject to prior sale, change or withdrawal.



Call Affinity Real Estate

218-237-3333

info@affinityrealestate.com



Affinity Real Estate - 600 Park Avenue South - Park Rapids MN 56470



website: www.AffinityRealEstate.com | email: info@affinityrealestate.com | office: 218-237-3333 | fax: 218-237-3377

Affinity
REAL ESTATE INC

\$290,000

MLS 6702196 Residential
37406 County Highway 35
Dent MN 56528



website: www.AffinityRealEstate.com | email: info@affinityrealestate.com | office: 218-237-3333 | fax: 218-237-3377

Affinity
REAL ESTATE INC

\$290,000

MLS 6702196 Residential
37406 County Highway 35
Dent MN 56528



website: www.AffinityRealEstate.com | email: info@affinityrealestate.com | office: 218-237-3333 | fax: 218-237-3377

Affinity
REAL ESTATE INC

\$290,000
MLS 6702196 Residential
37406 County Highway 35
Dent MN 56528



website: www.AffinityRealEstate.com | email: info@affinityrealestate.com | office: 218-237-3333 | fax: 218-237-3377

Affinity
REAL ESTATE INC

\$290,000
MLS 6702196 Residential
37406 County Highway 35
Dent MN 56528

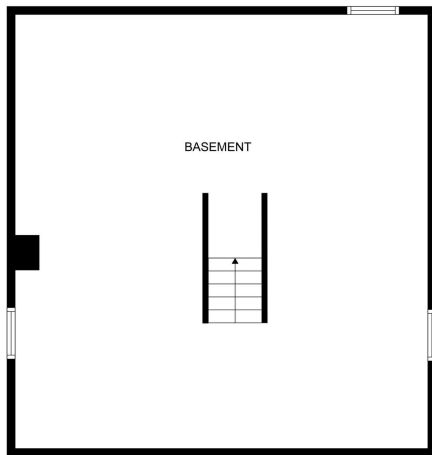


website: www.AffinityRealEstate.com | email: info@affinityrealestate.com | office: 218-237-3333 | fax: 218-237-3377

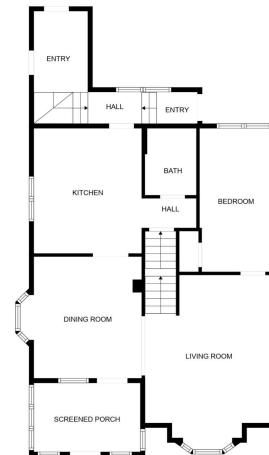


\$290,000

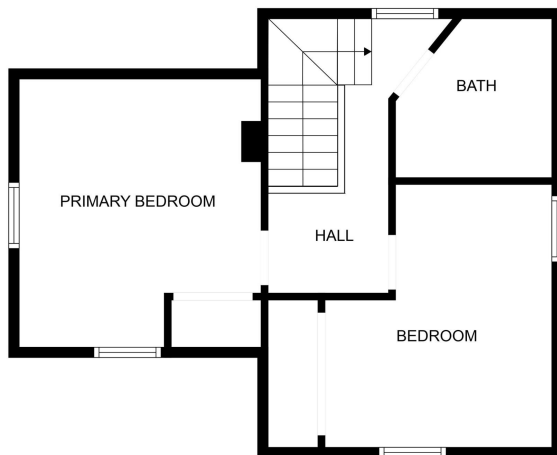
MLS 6702196 Residential
37406 County Highway 35
Dent MN 56528



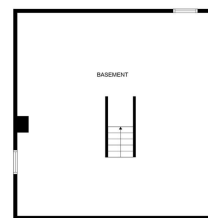
FLOOR PLAN CREATED BY CUBICASA APP. MEASUREMENTS DEEMED HIGHLY RELIABLE BUT NOT GUARANTEED.



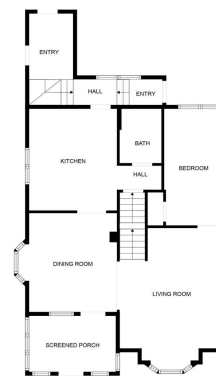
FLOOR PLAN CREATED BY CUBICASA APP. MEASUREMENTS DEEMED HIGHLY RELIABLE BUT NOT GUARANTEED.



FLOOR PLAN CREATED BY CUBICASA APP. MEASUREMENTS DEEMED HIGHLY RELIABLE BUT NOT GUARANTEED.



FLOOR 3



FLOOR 4



FLOOR 5



FLOOR PLAN CREATED BY CUBICASA APP. MEASUREMENTS DEEMED HIGHLY RELIABLE BUT NOT GUARANTEED.

website: www.AffinityRealEstate.com | email: info@affinityrealestate.com | office: 218-237-3333 | fax: 218-237-3377

Affinity
REAL ESTATE INC

\$290,000
MLS 6702196 Residential
37406 County Highway 35
Dent MN 56528