



MLS 6702327 Residential

\$304,900

2,464 sq ft
4 bedrooms
3 baths

2717 Calihan Avenue
Bemidji MN 56601

Status: Closed

Description:

This beautifully updated home offers comfort, style, and functionality. Featuring a brick and stucco exterior, it includes an oversized attached double garage and a fully fenced backyard. Enjoy outdoor living with a screened back porch, perfect for relaxing or entertaining.

Inside, you'll find a new custom kitchen, new tile and carpet and updated bathrooms. The lower-level family room includes a cozy wood-burning fireplace. With new central air and a location close to schools, shopping, and more—this home checks all the boxes.

Additional Details:

Year Built	1964
Lot Acres	0.43
Lot Dimensions	117 x 160
Garage Stalls	2
School District	31
Taxes	\$2,498
Taxes with Assessments	\$2,684
Tax Year	2025

Additional Features:

Basement: Block, Full **Fuel:** Natural Gas **Garage:** 2 **Heat:** Forced Air **Sewer:** City Sewer/Connected **Water:** City Water/Connected **Air Conditioning:** Central Air

Driving Directions:

North on Bemidji Avenue, right on 26th Street, left on Calihan, property is on left.



Listed By:
218 Real Estate

Affinity Real Estate Inc. participates in the Regional Multiple Listing Service of Minnesota, Inc Broker Reciprocity (sm) program, allowing us to display other broker's listings on our website. All properties are subject to prior sale, change or withdrawal.



Call Affinity Real Estate

218-237-3333

info@affinityrealestate.com



Affinity Real Estate - 600 Park Avenue South - Park Rapids MN 56470



website: www.AffinityRealEstate.com | email: info@affinityrealestate.com | office: 218-237-3333 | fax: 218-237-3377

Affinity
REAL ESTATE INC

\$304,900
MLS 6702327 Residential
2717 Calihan Avenue
Bemidji MN 56601



website: www.AffinityRealEstate.com | email: info@affinityrealestate.com | office: 218-237-3333 | fax: 218-237-3377

Affinity
REAL ESTATE INC

\$304,900
MLS 6702327 Residential
2717 Calihan Avenue
Bemidji MN 56601



website: www.AffinityRealEstate.com | email: info@affinityrealestate.com | office: 218-237-3333 | fax: 218-237-3377



\$304,900
MLS 6702327 Residential
2717 Calihan Avenue
Bemidji MN 56601



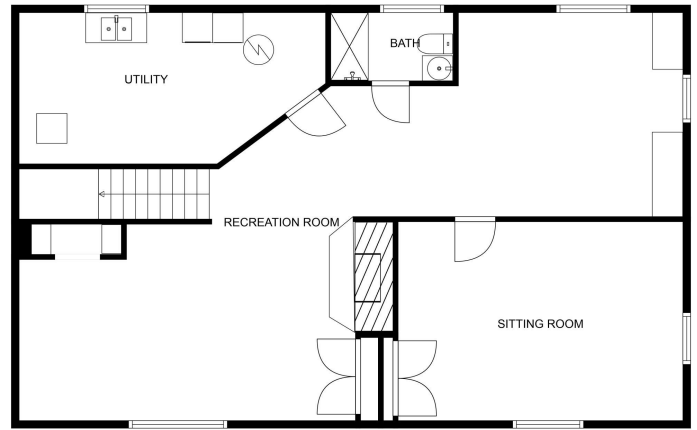
website: www.AffinityRealEstate.com | email: info@affinityrealestate.com | office: 218-237-3333 | fax: 218-237-3377

Affinity
REAL ESTATE INC

\$304,900
MLS 6702327 Residential
2717 Calihan Avenue
Bemidji MN 56601



FLOOR PLAN CREATED BY CUBICASA APP. MEASUREMENTS DEEMED HIGHLY RELIABLE BUT NOT GUARANTEED.



FLOOR PLAN CREATED BY CUBICASA APP. MEASUREMENTS DEEMED HIGHLY RELIABLE BUT NOT GUARANTEED.



FLOOR 2



FLOOR 1

FLOOR PLAN CREATED BY CUBICASA APP. MEASUREMENTS DEEMED HIGHLY RELIABLE BUT NOT GUARANTEED.

website: www.AffinityRealEstate.com | email: info@affinityrealestate.com | office: 218-237-3333 | fax: 218-237-3377



\$304,900
 MLS 6702327 Residential
 2717 Calihan Avenue
 Bemidji MN 56601