



MLS 6702467 Lake Land

\$69,900

Description:

Stunning view with 322 feet frontage on the Mississippi, 2 Car Garage with Living Quarters, Holding Tank, Outhouse, New Siding, New Roof, New Windows, New Entrance Door, New Garage Door, Close to ATV Trails, Lot non-buildable, Flood Way, Shallow Well, SOLD AS-IS

Additional Details:

Lot Acres	1.69
Lot Dimensions	322x228x322x228
School District	8001
Taxes	\$136
Taxes with Assessments	\$136
Tax Year	2024

Additional Features:

Driving Directions:

From Aitkin N or 1 turns to 22 left on 440th, stay left to 373 to 43515 373rd Lane



Listed By:
Wren Realty Inc.

Affinity Real Estate Inc. participates in the Regional Multiple Listing Service of Minnesota, Inc Broker Reciprocity (sm) program, allowing us to display other broker's listings on our website. All properties are subject to prior sale, change or withdrawal.



Call Affinity Real Estate

218-237-3333

info@affinityrealestate.com



Affinity Real Estate - 600 Park Avenue South - Park Rapids MN 56470



website: www.AffinityRealEstate.com | email: info@affinityrealestate.com | office: 218-237-3333 | fax: 218-237-3377

Affinity
REAL ESTATE INC

\$69,900

MLS 6702467 Lake Land
43515 373rd Lane
Aitkin MN 56431



website: www.AffinityRealEstate.com | email: info@affinityrealestate.com | office: 218-237-3333 | fax: 218-237-3377



\$69,900

MLS 6702467 Lake Land
43515 373rd Lane
Aitkin MN 56431

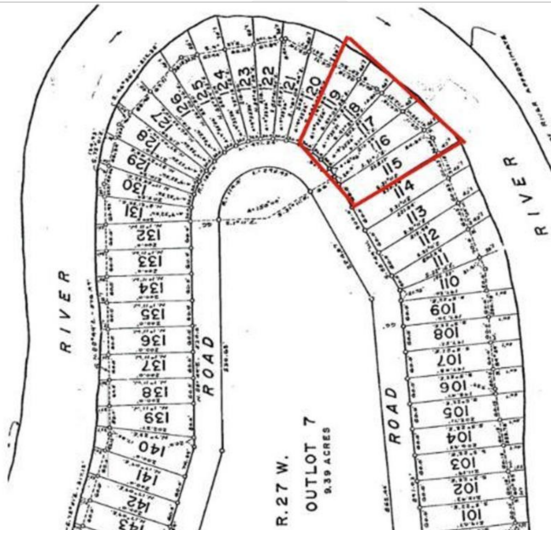


website: www.AffinityRealEstate.com | email: info@affinityrealestate.com | office: 218-237-3333 | fax: 218-237-3377

Affinity
REAL ESTATE INC

\$69,900

MLS 6702467 Lake Land
43515 373rd Lane
Aitkin MN 56431



website: www.AffinityRealEstate.com | email: info@affinityrealestate.com | office: 218-237-3333 | fax: 218-237-3377



\$69,900

MLS 6702467 Lake Land
43515 373rd Lane
Aitkin MN 56431