



MLS 6702471 Lake Home

**\$389,900**

1,680 sq ft  
3 bedrooms  
2 baths

29582 Silent Shore Drive  
Dent MN 56528

Waterfront: Moore

Status: Active

#### Description:

This charming 3-bedroom 2-bathroom home is located on over 11 acres & overlooks Moore Lake! The interior of the home offers many highlights! The living room boasts with large windows that flood the space with natural light and a great trayed ceiling with a built-in bookcase that includes an electric fireplace! The kitchen features ample counter space, a huge island with bar seating, stainless steel appliances & an amazing view of Moore Lake. The primary bedroom includes a tray ceiling with a huge walk-in closet. The primary en-suite bathroom has elegant fixtures with a spacious walk-in tiled shower and double sink vanity. A generous sized laundry room includes great built-ins. Outside, enjoy your evenings on one of the three amazing decks. The vast acreage opens up many possibilities and offers many pines as well as hardwoods. Large chain link fencing in the backyard. To top it off you have a beautifully finished/heated detached (32'x32') garage/shop. This property truly offers the perfect blend of rural tranquility and modern comfort.

#### Additional Details:

Year Built	2017
Lot Acres	11.89
Lot Dimensions	275x490x480x716x737
Garage Stalls	4
School District	548
Taxes	\$2,095
Taxes with Assessments	\$2,180
Tax Year	2025

#### Additional Features:

**Basement:** Crawl Space **Fuel:** Propane **Garage:** 4 **Heat:** Forced Air, Fireplace(s) **Sewer:** Private Sewer, Septic System Compliant - Yes  
**Water:** Private **Air Conditioning:** Central Air

#### Driving Directions:

7 miles West of Dent on Hwy 108, right on Silent Shore Dr. Signs posted



Listed By:  
Coldwell Banker Preferred Partners

Affinity Real Estate Inc. participates in the Regional Multiple Listing Service of Minnesota, Inc Broker Reciprocity (sm) program, allowing us to display other broker's listings on our website. All properties are subject to prior sale, change or withdrawal.



Call Affinity Real Estate

**218-237-3333**

[info@affinityrealestate.com](mailto:info@affinityrealestate.com)



Affinity Real Estate - 600 Park Avenue South - Park Rapids MN 56470





website: [www.AffinityRealEstate.com](http://www.AffinityRealEstate.com) | email: [info@affinityrealestate.com](mailto:info@affinityrealestate.com) | office: 218-237-3333 | fax: 218-237-3377



**\$389,900**  
 MLS 6702471 Lake Home  
 29582 Silent Shore Drive  
 Dent MN 56528





website: [www.AffinityRealEstate.com](http://www.AffinityRealEstate.com) | email: [info@affinityrealestate.com](mailto:info@affinityrealestate.com) | office: 218-237-3333 | fax: 218-237-3377



**\$389,900**  
 MLS 6702471 Lake Home  
 29582 Silent Shore Drive  
 Dent MN 56528





website: [www.AffinityRealEstate.com](http://www.AffinityRealEstate.com) | email: [info@affinityrealestate.com](mailto:info@affinityrealestate.com) | office: 218-237-3333 | fax: 218-237-3377

**Affinity**  
REAL ESTATE INC

**\$389,900**  
MLS 6702471 Lake Home  
29582 Silent Shore Drive  
Dent MN 56528





website: [www.AffinityRealEstate.com](http://www.AffinityRealEstate.com) | email: [info@affinityrealestate.com](mailto:info@affinityrealestate.com) | office: 218-237-3333 | fax: 218-237-3377



**\$389,900**  
 MLS 6702471 Lake Home  
 29582 Silent Shore Drive  
 Dent MN 56528





website: [www.AffinityRealEstate.com](http://www.AffinityRealEstate.com) | email: [info@affinityrealestate.com](mailto:info@affinityrealestate.com) | office: 218-237-3333 | fax: 218-237-3377

**Affinity**  
REAL ESTATE INC

**\$389,900**  
MLS 6702471 Lake Home  
29582 Silent Shore Drive  
Dent MN 56528





website: [www.AffinityRealEstate.com](http://www.AffinityRealEstate.com) | email: [info@affinityrealestate.com](mailto:info@affinityrealestate.com) | office: 218-237-3333 | fax: 218-237-3377

**Affinity**  
REAL ESTATE INC

**\$389,900**  
MLS 6702471 Lake Home  
29582 Silent Shore Drive  
Dent MN 56528



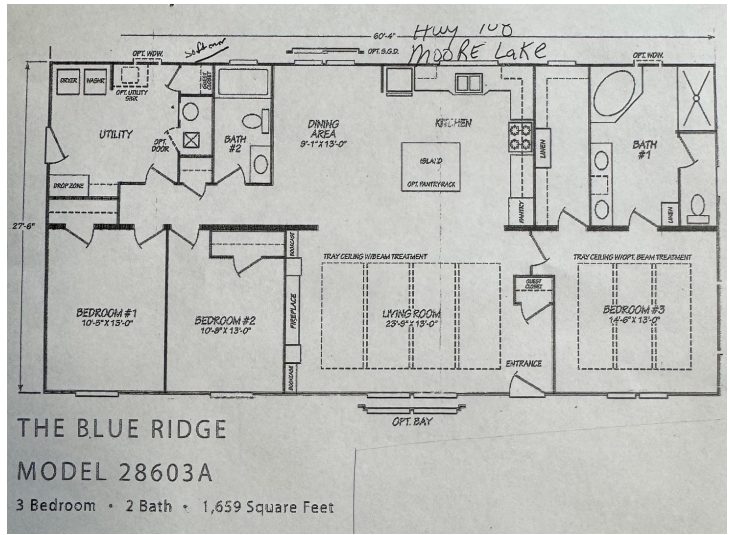


website: [www.AffinityRealEstate.com](http://www.AffinityRealEstate.com) | email: [info@affinityrealestate.com](mailto:info@affinityrealestate.com) | office: 218-237-3333 | fax: 218-237-3377



**\$389,900**  
 MLS 6702471 Lake Home  
 29582 Silent Shore Drive  
 Dent MN 56528





website: [www.AffinityRealEstate.com](http://www.AffinityRealEstate.com) | email: [info@affinityrealestate.com](mailto:info@affinityrealestate.com) | office: 218-237-3333 | fax: 218-237-3377



**\$389,900**  
 MLS 6702471 Lake Home  
 29582 Silent Shore Drive  
 Dent MN 56528



website: [www.AffinityRealEstate.com](http://www.AffinityRealEstate.com) | email: [info@affinityrealestate.com](mailto:info@affinityrealestate.com) | office: 218-237-3333 | fax:218-237-3377



**\$389,900**

MLS 6702471 Lake Home  
29582 Silent Shore Drive  
Dent MN 56528



website: [www.AffinityRealEstate.com](http://www.AffinityRealEstate.com) | email: [info@affinityrealestate.com](mailto:info@affinityrealestate.com) | office: 218-237-3333 | fax:218-237-3377



**\$389,900**

MLS 6702471 Lake Home  
29582 Silent Shore Drive  
Dent MN 56528