



MLS 6702738 Land

\$255,000

59.3 Acres

Other

TBD 48th Ave

Pine River MN 56474

Status: Active

Description:

If you've been searching for your own private slice of the Northwoods, look no further. This 59.3-acre parcel is perfectly located just west of Pine River, Minnesota, in the heart of some of the finest hunting territory the state has to offer. Whether you're pursuing whitetail deer, turkey, grouse, or black bear, this land is your ideal basecamp for adventure. The property is heavily wooded with a beautiful mix of mature hardwoods and evergreens, offering excellent natural cover, diverse terrain, and well-established game trails throughout. It's a true sportsman's paradise, equally suited for bow or rifle hunting.

Access is easy via a well-maintained township road, and the property's location provides just the right amount of seclusion while still being only minutes from the amenities of Pine River. This land offers endless potential—whether you're looking for a quiet retreat, a spot to build your dream hunting cabin, or a smart long-term investment in Minnesota's great outdoors.

Don't miss this rare opportunity to own a stunning piece of wilderness in a highly sought-after area. Call today to schedule your private tour.

Additional Details:

Lot Acres	59.3
Lot Dimensions	657x1310x3282x653x2628x655
School District	2174
Taxes	\$604
Taxes with Assessments	\$604
Tax Year	2024

Additional Features:

Driving Directions:

From Pine River go west on Co 2 7 Miles to Co 25. Then go South 3 Miles. Property will be marked on the East side of the road. Follow signs down Easement from approach.



Listed By:
Coldwell Banker Realty

Affinity Real Estate Inc. participates in the Regional Multiple Listing Service of Minnesota, Inc Broker Reciprocity (sm) program, allowing us to display other broker's listings on our website. All properties are subject to prior sale, change or withdrawal.



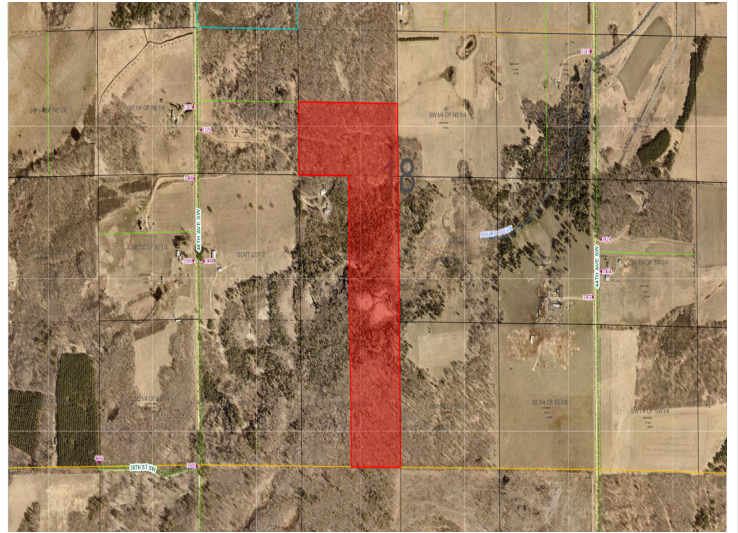
Call Affinity Real Estate

218-237-3333

info@affinityrealestate.com



Affinity Real Estate - 600 Park Avenue South - Park Rapids MN 56470



website: www.AffinityRealEstate.com | email: info@affinityrealestate.com | office: 218-237-3333 | fax:218-237-3377



\$255,000
MLS 6702738 Land
TBD 48th Ave
Pine River MN 56474