



MLS 6703093 Lake Home

**\$599,900**

2,133 sq ft  
2 bedrooms  
3 baths

1388 Little Deep Lake Drive  
Backus MN 56435

Waterfront: Little Deep Lake (Ponto  
Lake Twp.)

Status: Pending

**Description:**

Welcome to Paradise with 17 acres and a private lake. This is one the most beautiful properties you can own. The drive in and the lake views are breathtaking. The home is ready for you to move into and features tiled floors, main floor family room and living room, fireplace, skylight, open balcony upstairs that over looks family room and kitchen formal dining room and much more. Outside is a 34 x 40 garage that has a 16 x 24 finished and heated area, 44 x 80 pole building with 3 overhead doors, the back space was set up for horses and a tack room and has a 6' lean along the side. There is a patio facing the lake to relax and enjoy the sunsets, a large barbecue area and tiered levels for gardening. There are water sources throughout the property for maintaining flower beds, lawn and gardens. Beautiful wooded property and a private lake with an abundance of fish. If your looking for a private, peaceful, beautiful property, welcome home!

**Additional Details:**

Year Built	1980
Lot Acres	17.16
Lot Dimensions	Getting
Garage Stalls	6
School District	2174
Taxes	\$2,714
Taxes with Assessments	\$2,714
Tax Year	2025

**Additional Features:**

**Fuel:** Propane **Heat:** Boiler, Outdoor Boiler

**Driving Directions:**

From Brainerd Hwy 371 North turn right onto 16th Ave SW, continue through roundabout to Normans Crossing Rd NW turn left go to County 118 NW turn right to 20th Ave NW turn right to Little Deep Lake Drive NW turn left and stay to the left to home.



Listed By:  
Princeton Realty

Affinity Real Estate Inc. participates in the Regional Multiple Listing Service of Minnesota, Inc Broker Reciprocity (sm) program, allowing us to display other broker's listings on our website. All properties are subject to prior sale, change or withdrawal.



**Call Affinity Real Estate**

**218-237-3333**

**info@affinityrealestate.com**



**Affinity Real Estate - 600 Park Avenue South - Park Rapids MN 56470**





website: [www.AffinityRealEstate.com](http://www.AffinityRealEstate.com) | email: [info@affinityrealestate.com](mailto:info@affinityrealestate.com) | office: 218-237-3333 | fax: 218-237-3377

**Affinity**  
REAL ESTATE INC

**\$599,900**

MLS 6703093 Lake Home  
1388 Little Deep Lake Drive  
Backus MN 56435





website: [www.AffinityRealEstate.com](http://www.AffinityRealEstate.com) | email: [info@affinityrealestate.com](mailto:info@affinityrealestate.com) | office: 218-237-3333 | fax: 218-237-3377



**\$599,900**

MLS 6703093 Lake Home  
1388 Little Deep Lake Drive  
Backus MN 56435





website: [www.AffinityRealEstate.com](http://www.AffinityRealEstate.com) | email: [info@affinityrealestate.com](mailto:info@affinityrealestate.com) | office: 218-237-3333 | fax: 218-237-3377



**\$599,900**  
 MLS 6703093 Lake Home  
 1388 Little Deep Lake Drive  
 Backus MN 56435





website: [www.AffinityRealEstate.com](http://www.AffinityRealEstate.com) | email: [info@affinityrealestate.com](mailto:info@affinityrealestate.com) | office: 218-237-3333 | fax: 218-237-3377

**Affinity**  
REAL ESTATE INC

**\$599,900**  
MLS 6703093 Lake Home  
1388 Little Deep Lake Drive  
Backus MN 56435





website: [www.AffinityRealEstate.com](http://www.AffinityRealEstate.com) | email: [info@affinityrealestate.com](mailto:info@affinityrealestate.com) | office: 218-237-3333 | fax: 218-237-3377

**Affinity**  
REAL ESTATE INC

**\$599,900**  
MLS 6703093 Lake Home  
1388 Little Deep Lake Drive  
Backus MN 56435





website: [www.AffinityRealEstate.com](http://www.AffinityRealEstate.com) | email: [info@affinityrealestate.com](mailto:info@affinityrealestate.com) | office: 218-237-3333 | fax: 218-237-3377

**Affinity**  
REAL ESTATE INC

**\$599,900**  
MLS 6703093 Lake Home  
1388 Little Deep Lake Drive  
Backus MN 56435





website: [www.AffinityRealEstate.com](http://www.AffinityRealEstate.com) | email: [info@affinityrealestate.com](mailto:info@affinityrealestate.com) | office: 218-237-3333 | fax: 218-237-3377



**\$599,900**  
 MLS 6703093 Lake Home  
 1388 Little Deep Lake Drive  
 Backus MN 56435





website: [www.AffinityRealEstate.com](http://www.AffinityRealEstate.com) | email: [info@affinityrealestate.com](mailto:info@affinityrealestate.com) | office: 218-237-3333 | fax: 218-237-3377



**\$599,900**

MLS 6703093 Lake Home  
1388 Little Deep Lake Drive  
Backus MN 56435



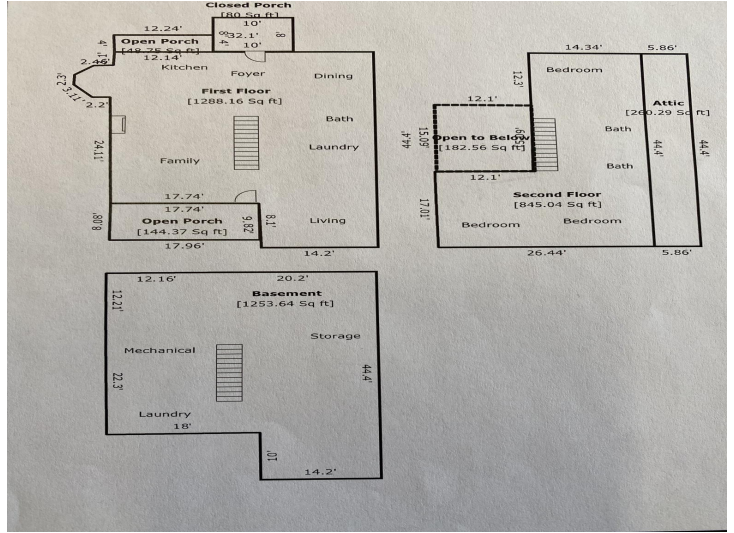


website: [www.AffinityRealEstate.com](http://www.AffinityRealEstate.com) | email: [info@affinityrealestate.com](mailto:info@affinityrealestate.com) | office: 218-237-3333 | fax: 218-237-3377



**\$599,900**  
 MLS 6703093 Lake Home  
 1388 Little Deep Lake Drive  
 Backus MN 56435





website: [www.AffinityRealEstate.com](http://www.AffinityRealEstate.com) | email: [info@affinityrealestate.com](mailto:info@affinityrealestate.com) | office: 218-237-3333 | fax: 218-237-3377



**\$599,900**

MLS 6703093 Lake Home  
1388 Little Deep Lake Drive  
Backus MN 56435