



MLS 6703146 Residential

\$469,900

1,920 sq ft
3 bedrooms
2 baths

148 Lakewood Drive
Bemidji MN 56601

Status: Active

Description:

Stunning Custom-Built 3 Bed, 2 Bath Home – Now For Sale! Welcome to this remarkable home featuring high-end finishes and thoughtful design throughout. The open-concept main area is vaulted and spacious—perfect for entertaining family and friends. The luxurious master suite boasts a walk-in shower and elegant touches that make every day feel like a retreat. Storage and space abound with a large 2-stall heated garage plus a massive 40x30 detached heated garage—ideal for all your vehicles, toys, and workshop needs. Step outside to enjoy a beautifully landscaped yard complete with a designer sprinkler system. Best of all, Lake Bemidji's Northwoods Landing is just moments away, offering quick and easy access to the lake lifestyle you've been dreaming of. This is more than a home—it's a gem. Don't miss your chance to make it yours!

Additional Details:

Year Built	2012
Lot Acres	1.06
Lot Dimensions	200x230
Garage Stalls	5
School District	31
Taxes	\$5,572
Taxes with Assessments	\$5,572
Tax Year	2024

Additional Features:

Basement: None **Fuel:** Natural Gas **Garage:** 5 **Heat:** Forced Air **Sewer:** Private Sewer **Water:** Private **Air Conditioning:** Central Air

Driving Directions:

North on Bemidji Rd. Take a left on Lakewood Dr. to property.



Listed By:
Grimes Realty

Affinity Real Estate Inc. participates in the Regional Multiple Listing Service of Minnesota, Inc Broker Reciprocity (sm) program, allowing us to display other broker's listings on our website. All properties are subject to prior sale, change or withdrawal.



Call Affinity Real Estate

218-237-3333

info@affinityrealestate.com



Affinity Real Estate - 600 Park Avenue South - Park Rapids MN 56470



website: www.AffinityRealEstate.com | email: info@affinityrealestate.com | office: 218-237-3333 | fax: 218-237-3377

Affinity
REAL ESTATE INC

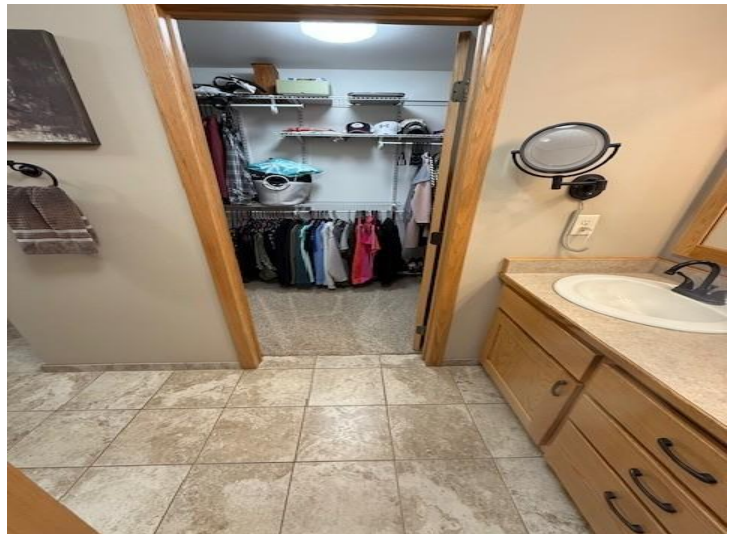
\$469,900
MLS 6703146 Residential
148 Lakewood Drive
Bemidji MN 56601



website: www.AffinityRealEstate.com | email: info@affinityrealestate.com | office: 218-237-3333 | fax: 218-237-3377

Affinity
REAL ESTATE INC

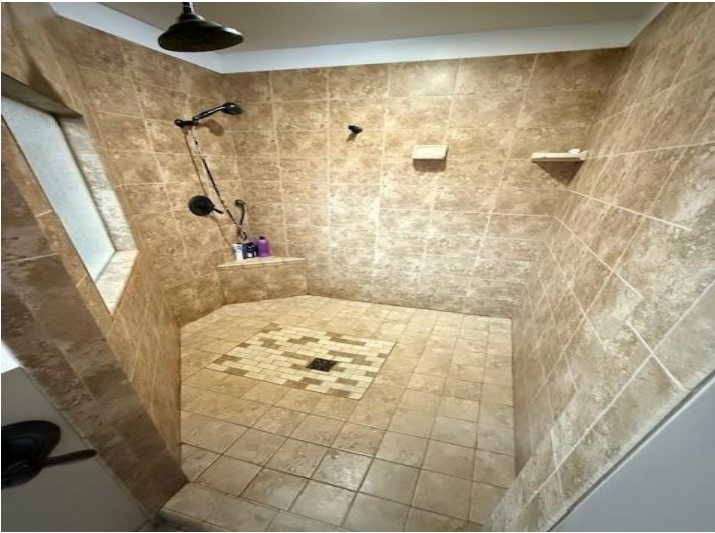
\$469,900
MLS 6703146 Residential
148 Lakewood Drive
Bemidji MN 56601



website: www.AffinityRealEstate.com | email: info@affinityrealestate.com | office: 218-237-3333 | fax: 218-237-3377

Affinity
REAL ESTATE INC

\$469,900
MLS 6703146 Residential
148 Lakewood Drive
Bemidji MN 56601



website: www.AffinityRealEstate.com | email: info@affinityrealestate.com | office: 218-237-3333 | fax: 218-237-3377

Affinity
REAL ESTATE INC

\$469,900
MLS 6703146 Residential
148 Lakewood Drive
Bemidji MN 56601



website: www.AffinityRealEstate.com | email: info@affinityrealestate.com | office: 218-237-3333 | fax: 218-237-3377

Affinity
REAL ESTATE INC

\$469,900
MLS 6703146 Residential
148 Lakewood Drive
Bemidji MN 56601



website: www.AffinityRealEstate.com | email: info@affinityrealestate.com | office: 218-237-3333 | fax: 218-237-3377



\$469,900
MLS 6703146 Residential
148 Lakewood Drive
Bemidji MN 56601



website: www.AffinityRealEstate.com | email: info@affinityrealestate.com | office: 218-237-3333 | fax:218-237-3377



\$469,900
MLS 6703146 Residential
148 Lakewood Drive
Bemidji MN 56601

website: www.AffinityRealEstate.com | email: info@affinityrealestate.com | office: 218-237-3333 | fax:218-237-3377



\$469,900

MLS 6703146 Residential
148 Lakewood Drive
Bemidji MN 56601