



MLS 6703299 Residential

\$285,000

2,128 sq ft
5 bedrooms
2 baths

612 Woodland Avenue
Park Rapids MN 56470

Status: Pending

Description:

This recently remodeled 5-bedroom, 2-bath home in Park Rapids has everything you need! Offering plenty of space, recent update and an ideal location this one is a must see. Inside, you'll find a bright and open main level with 3 bedrooms, a full bath, and a nicely updated kitchen featuring maple cabinets, quartz countertops, stainless steel appliances, and a walk-in pantry. There is beautiful luxury vinyl planks upstairs and cozy carpet downstairs. The lower level offers 2 more spacious bedrooms, another full bath, laundry, and utility space. Outside, enjoy a fenced backyard, attached 2-stall garage, and new seamless gutters. Conveniently located close to the high school, downtown, and the Heartland Trail. Come take a look, you'll feel right at home!

Additional Details:

Year Built	1973
Lot Acres	0.33
Lot Dimensions	103 x 140
Garage Stalls	2
School District	309
Taxes	\$1,813
Taxes with Assessments	\$2,034
Tax Year	2025

Additional Features:

Basement: Block, Egress Window(s), Finished **Fuel:** Natural Gas **Garage:** 2 **Heat:** Forced Air **Sewer:** City Sewer/Connected **Water:** City Water/Connected **Air Conditioning:** Central Air

Driving Directions:

In Park Rapids, go on North Main to Monico Lane. Take a left onto Monico Lane to a left onto Woodland Ave. The property is on the left.



Listed By:
Keller Williams Realty Professionals

Affinity Real Estate Inc. participates in the Regional Multiple Listing Service of Minnesota, Inc Broker Reciprocity (sm) program, allowing us to display other broker's listings on our website. All properties are subject to prior sale, change or withdrawal.



Call Affinity Real Estate

218-237-3333

info@affinityrealestate.com



Affinity Real Estate - 600 Park Avenue South - Park Rapids MN 56470



website: www.AffinityRealEstate.com | email: info@affinityrealestate.com | office: 218-237-3333 | fax: 218-237-3377

Affinity
REAL ESTATE INC

\$285,000
MLS 6703299 Residential
612 Woodland Avenue
Park Rapids MN 56470



website: www.AffinityRealEstate.com | email: info@affinityrealestate.com | office: 218-237-3333 | fax: 218-237-3377



\$285,000
 MLS 6703299 Residential
 612 Woodland Avenue
 Park Rapids MN 56470



website: www.AffinityRealEstate.com | email: info@affinityrealestate.com | office: 218-237-3333 | fax: 218-237-3377

Affinity
REAL ESTATE INC

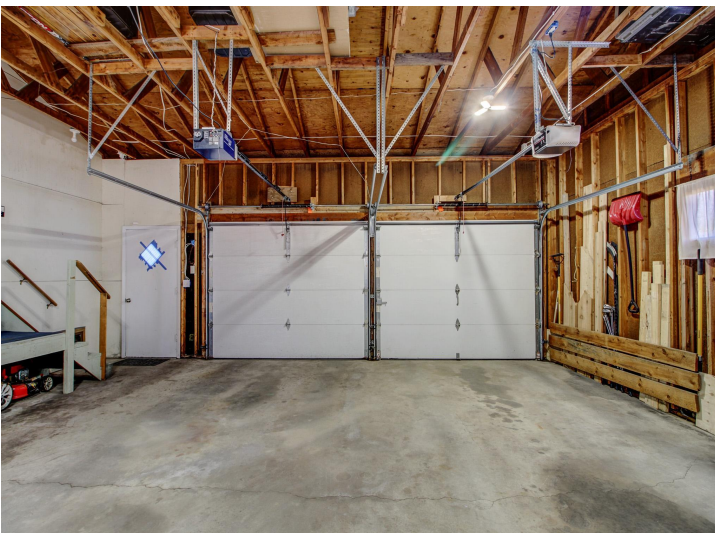
\$285,000
MLS 6703299 Residential
612 Woodland Avenue
Park Rapids MN 56470



website: www.AffinityRealEstate.com | email: info@affinityrealestate.com | office: 218-237-3333 | fax: 218-237-3377

Affinity
REAL ESTATE INC

\$285,000
MLS 6703299 Residential
612 Woodland Avenue
Park Rapids MN 56470



website: www.AffinityRealEstate.com | email: info@affinityrealestate.com | office: 218-237-3333 | fax: 218-237-3377



\$285,000
 MLS 6703299 Residential
 612 Woodland Avenue
 Park Rapids MN 56470

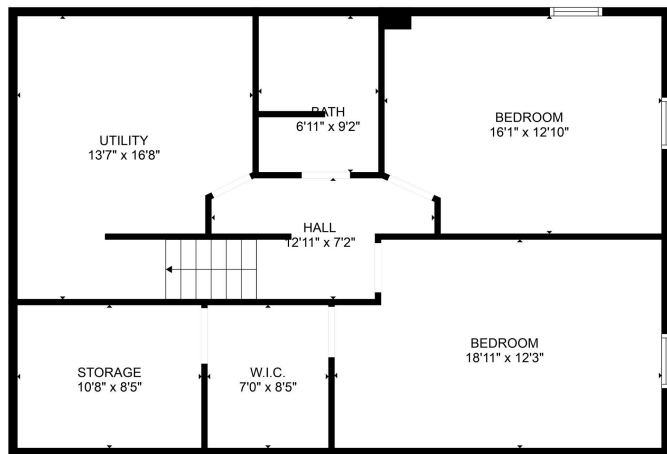


FLOOR PLAN CREATED BY CURBICASA APP. MEASUREMENTS DEEMED HIGHLY RELIABLE BUT NOT GUARANTEED.

website: www.AffinityRealEstate.com | email: info@affinityrealestate.com | office: 218-237-3333 | fax: 218-237-3377

Affinity
REAL ESTATE INC

\$285,000
MLS 6703299 Residential
612 Woodland Avenue
Park Rapids MN 56470



FLOOR PLAN CREATED BY CUBICASA API. MEASUREMENTS DEEMED HIGHLY RELIABLE BUT NOT GUARANTEED.

website: www.AffinityRealEstate.com | email: info@affinityrealestate.com | office: 218-237-3333 | fax: 218-237-3377



\$285,000

MLS 6703299 Residential
612 Woodland Avenue
Park Rapids MN 56470