



MLS 6703451 Lake Home

\$450,000

2,296 sq ft
2 bedrooms
2 baths

302 EagleS Landing Court
Federal Dam MN 56641

Waterfront: Leech

Status: Pending

Description:

This home offers great end of the road privacy as it is tucked quietly in the woods. Enjoy great fishing with deeded boat slip and boat lift just a minute away. Home is well appointed with hardwood floors, tongue and groove throughout, vaulted ceiling and a cozy wood burning fireplace. Step out and enjoy a little time on your 35x12 Deck and take in the peaceful sounds of nature in your backyard. All the charm of living up north is at your call. 50x42 Pole Shed with in-floor heat, in floor drain and ample room for all your outdoor equipment may have you spending more time in the shed than the house.

Additional Details:

Year Built	2007
Lot Acres	1.5
Lot Dimensions	87x209x296x187x239
Garage Stalls	7
School District	118
Taxes	\$1,534
Taxes with Assessments	\$1,600
Tax Year	2025

Additional Features:

Fuel: Electric, Propane, Wood **Heat:** Dual, Forced Air

Driving Directions:

From Walker MN take Hwy 200 east to Left on CR-8 for 11.8 miles to left on CR-73. follow for 4.2 miles to right on CR-136 for 1.5 to right on Five Mile Pt Rd NW to immediate right on Eagles Landing Ct NW. Sign on Property



Listed By:
Edina Realty, Inc.

Affinity Real Estate Inc. participates in the Regional Multiple Listing Service of Minnesota, Inc Broker Reciprocity (sm) program, allowing us to display other broker's listings on our website. All properties are subject to prior sale, change or withdrawal.



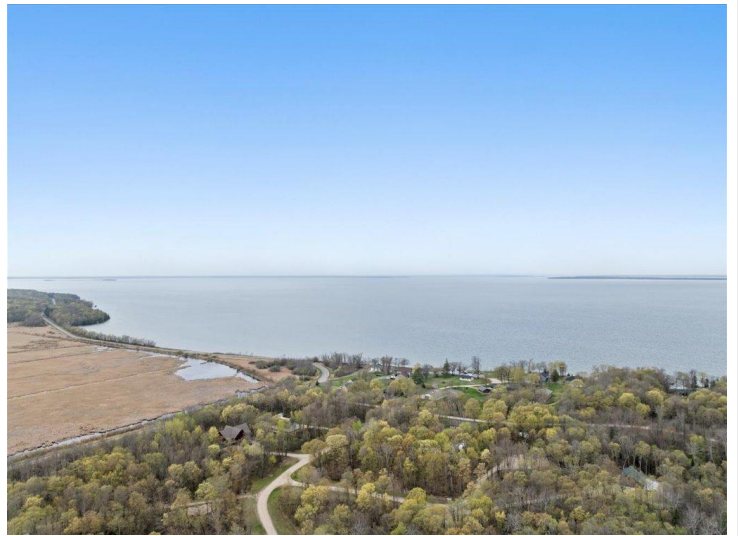
Call Affinity Real Estate

218-237-3333

info@affinityrealestate.com



Affinity Real Estate - 600 Park Avenue South - Park Rapids MN 56470



website: www.AffinityRealEstate.com | email: info@affinityrealestate.com | office: 218-237-3333 | fax: 218-237-3377

Affinity
REAL ESTATE INC

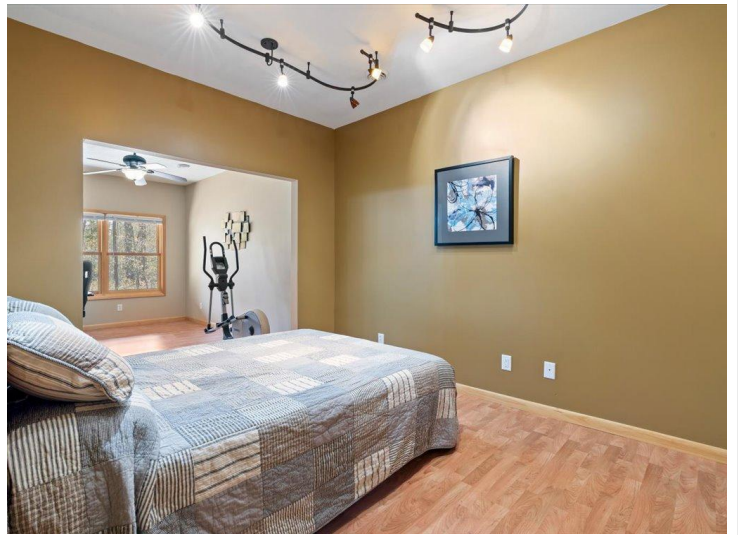
\$450,000
MLS 6703451 Lake Home
302 EagleS Landing Court
Federal Dam MN 56641



website: www.AffinityRealEstate.com | email: info@affinityrealestate.com | office: 218-237-3333 | fax: 218-237-3377

Affinity
REAL ESTATE INC

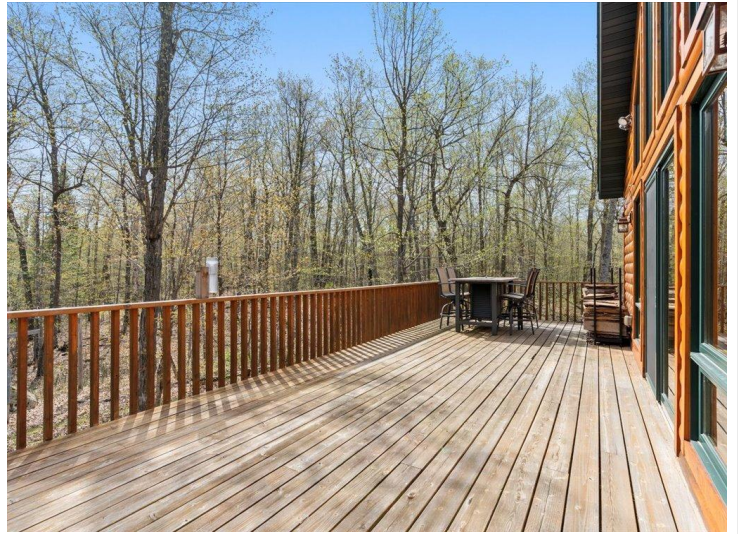
\$450,000
MLS 6703451 Lake Home
302 EagleS Landing Court
Federal Dam MN 56641



website: www.AffinityRealEstate.com | email: info@affinityrealestate.com | office: 218-237-3333 | fax: 218-237-3377

Affinity
REAL ESTATE INC

\$450,000
MLS 6703451 Lake Home
302 EagleS Landing Court
Federal Dam MN 56641

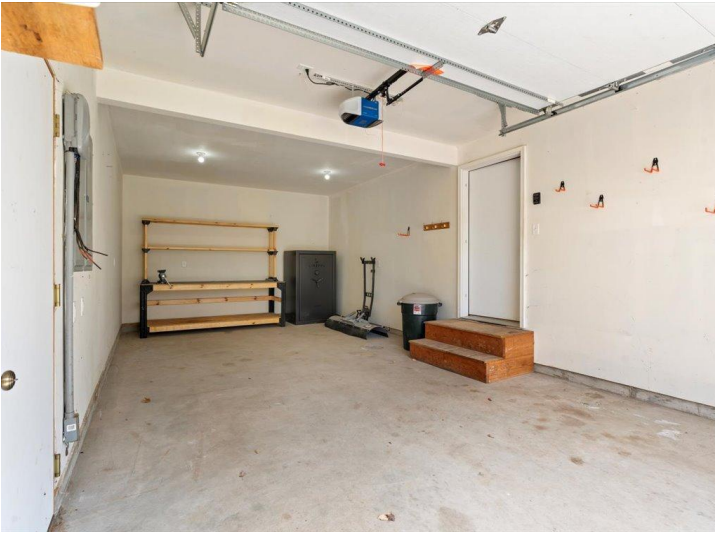


website: www.AffinityRealEstate.com | email: info@affinityrealestate.com | office: 218-237-3333 | fax: 218-237-3377



\$450,000

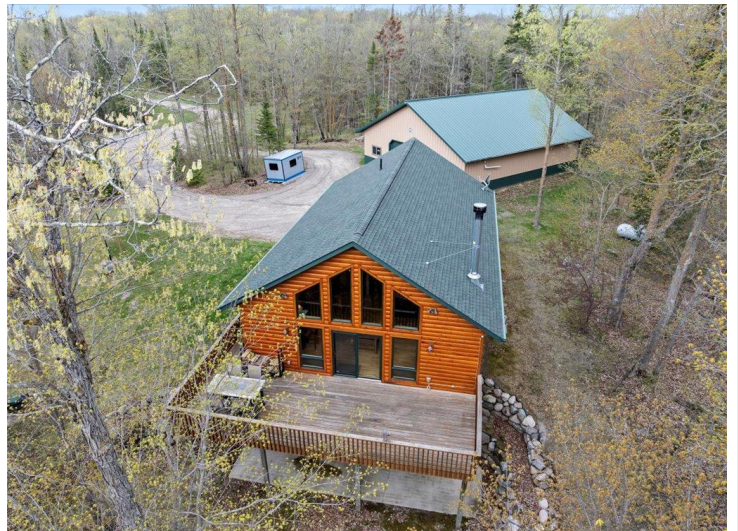
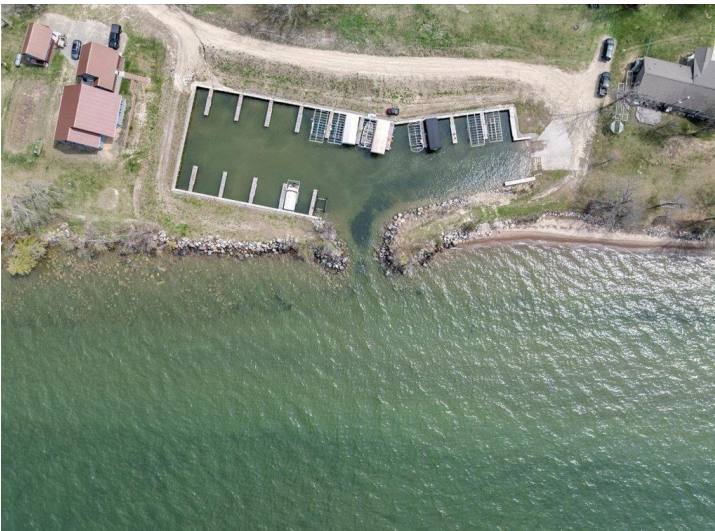
MLS 6703451 Lake Home
302 EagleS Landing Court
Federal Dam MN 56641



website: www.AffinityRealEstate.com | email: info@affinityrealestate.com | office: 218-237-3333 | fax: 218-237-3377



\$450,000
 MLS 6703451 Lake Home
 302 EagleS Landing Court
 Federal Dam MN 56641



website: www.AffinityRealEstate.com | email: info@affinityrealestate.com | office: 218-237-3333 | fax: 218-237-3377



\$450,000
 MLS 6703451 Lake Home
 302 EagleS Landing Court
 Federal Dam MN 56641



website: www.AffinityRealEstate.com | email: info@affinityrealestate.com | office: 218-237-3333 | fax: 218-237-3377

Affinity
REAL ESTATE INC

\$450,000

MLS 6703451 Lake Home
302 EagleS Landing Court
Federal Dam MN 56641



website: www.AffinityRealEstate.com | email: info@affinityrealestate.com | office: 218-237-3333 | fax: 218-237-3377



\$450,000

MLS 6703451 Lake Home
302 EagleS Landing Court
Federal Dam MN 56641