



MLS 6703687 Residential

\$350,000

1,574 sq ft
3 bedrooms
2 baths

4813 Kyar Lane
Brainerd MN 56401

Status: Active

Description:

Welcome to 4813 Kyar Lane — a beautifully maintained 3-bedroom, 2-bathroom home nestled in a quiet neighborhood with quick access to lakes, trails, and town. With 1,574 finished square feet, this home blends everyday comfort with extra space for work, play, and storage.

This home offers open layout with main floor living, and an spacious kitchen perfect for gatherings & mealtime. Both bathrooms are modern and clean, and the three bedrooms offer great flexibility for family, guests, or a home office.

Enjoy the convenience of a 2-stall attached garage, PLUS a dream setup for hobbyists and gearheads: a 24x40 detached heated garage — ideal for a workshop, man-cave or she-shed, or all your Up North toys!

Situated nearly 4 acres, this home offers the best of Lake Country living — just minutes from Gull Lake, Brainerd, Baxter or Nisswa!

Additional Details:

Year Built	2016
Lot Acres	3.83
Lot Dimensions	224 x 478 x 226 x irr
Garage Stalls	2
School District	181
Taxes	\$1,950
Taxes with Assessments	\$1,950
Tax Year	2024

Additional Features:

Basement: None **Fuel:** Electric **Garage:** 2 **Heat:** Boiler, Hot Water, Radiant Floor **Sewer:** Private Sewer, Tank with Drainage Field **Water:** Drilled, Well **Air Conditioning:** None

Driving Directions:

From 371 South, right on Barbeau road



Listed By:
Edina Realty, Inc.

Affinity Real Estate Inc. participates in the Regional Multiple Listing Service of Minnesota, Inc Broker Reciprocity (sm) program, allowing us to display other broker's listings on our website. All properties are subject to prior sale, change or withdrawal.



Call Affinity Real Estate

218-237-3333

info@affinityrealestate.com



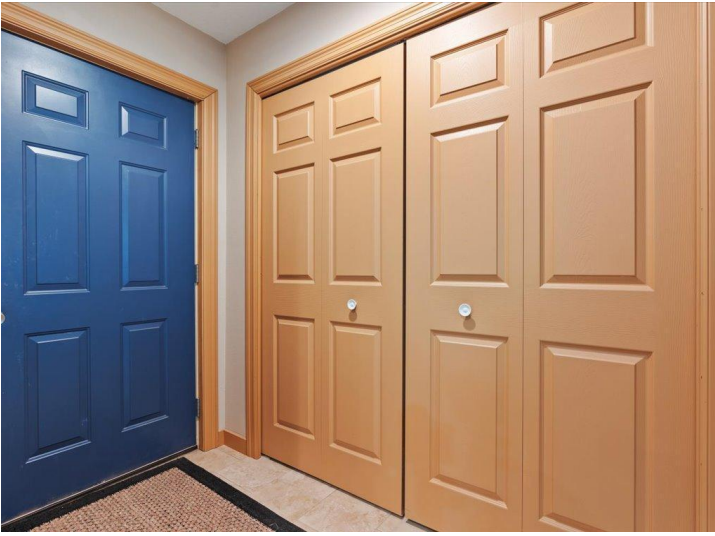
Affinity Real Estate - 600 Park Avenue South - Park Rapids MN 56470



website: www.AffinityRealEstate.com | email: info@affinityrealestate.com | office: 218-237-3333 | fax: 218-237-3377

Affinity
REAL ESTATE INC

\$350,000
MLS 6703687 Residential
4813 Kyar Lane
Brainerd MN 56401



website: www.AffinityRealEstate.com | email: info@affinityrealestate.com | office: 218-237-3333 | fax:218-237-3377



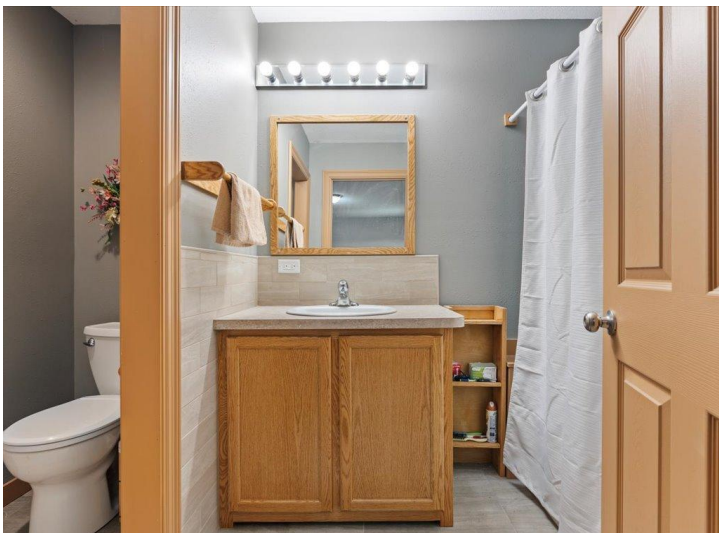
\$350,000
MLS 6703687 Residential
4813 Kyar Lane
Brainerd MN 56401



website: www.AffinityRealEstate.com | email: info@affinityrealestate.com | office: 218-237-3333 | fax: 218-237-3377

Affinity
REAL ESTATE INC

\$350,000
MLS 6703687 Residential
4813 Kyar Lane
Brainerd MN 56401



website: www.AffinityRealEstate.com | email: info@affinityrealestate.com | office: 218-237-3333 | fax:218-237-3377

Affinity
REAL ESTATE INC

\$350,000
MLS 6703687 Residential
4813 Kyar Lane
Brainerd MN 56401



website: www.AffinityRealEstate.com | email: info@affinityrealestate.com | office: 218-237-3333 | fax:218-237-3377



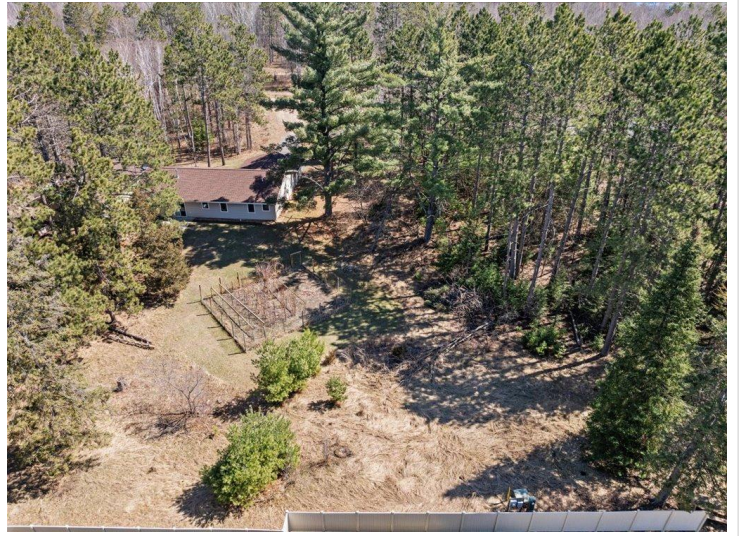
\$350,000
MLS 6703687 Residential
4813 Kyar Lane
Brainerd MN 56401



website: www.AffinityRealEstate.com | email: info@affinityrealestate.com | office: 218-237-3333 | fax:218-237-3377

Affinity
REAL ESTATE INC

\$350,000
MLS 6703687 Residential
4813 Kyar Lane
Brainerd MN 56401



website: www.AffinityRealEstate.com | email: info@affinityrealestate.com | office: 218-237-3333 | fax:218-237-3377



\$350,000
MLS 6703687 Residential
4813 Kyar Lane
Brainerd MN 56401



website: www.AffinityRealEstate.com | email: info@affinityrealestate.com | office: 218-237-3333 | fax: 218-237-3377



\$350,000
MLS 6703687 Residential
4813 Kyar Lane
Brainerd MN 56401