



MLS 6703756 Lake Home

\$609,900

3,187 sq ft
5 bedrooms
3 baths

11833 Maplewood Drive
Brainerd MN 56401

Waterfront: Dade

Status: Pending

Description:

Nestled in a sought-after East Gull Lake neighborhood, the location of this spacious five-bedroom, three-bathroom residence is truly exceptional. Hobbyists will appreciate the convenience of both a three-car attached garage with in-floor heat and an oversized two-car detached heated garage.

Very well maintained, the home features the added comfort of in-floor heating in the basement. This desirable walk-out property is offered in great condition and is move-in ready. Enhancing its appeal are a cozy gas fireplace, a convenient sprinkler system for the landscaped yard, and access to beautiful Dade Lake. The interior showcases elegant granite countertops throughout the kitchen and bathrooms, while the exterior boasts a spacious deck and a paver patio, ideal for outdoor entertaining.

The unparalleled location is just walking distance away from "The Classic," a top-rated Minnesota golf course and restaurant. Residents will also enjoy access to wonderful walking trails, further elevating the desirability of this remarkable property.

Additional Details:

Year Built	2002
Lot Acres	0.75
Lot Dimensions	240x160
Garage Stalls	5
School District	181
Taxes	\$3,690
Taxes with Assessments	\$3,756
Tax Year	2025

Additional Features:

Fuel: Electric, Natural Gas **Heat:** Boiler, Forced Air, Radiant Floor

Driving Directions:

N on MN 371 to left onto CR 77 (Pine Beach Rd) to left onto CR 18, to right onto Maplewood Dr (Madden's Classic Golf Course Entrance across the street).



Listed By:
Positive Realty

Affinity Real Estate Inc. participates in the Regional Multiple Listing Service of Minnesota, Inc Broker Reciprocity (sm) program, allowing us to display other broker's listings on our website. All properties are subject to prior sale, change or withdrawal.



Call Affinity Real Estate

218-237-3333

info@affinityrealestate.com



Affinity Real Estate - 600 Park Avenue South - Park Rapids MN 56470



website: www.AffinityRealEstate.com | email: info@affinityrealestate.com | office: 218-237-3333 | fax: 218-237-3377



\$609,900
MLS 6703756 Lake Home
11833 Maplewood Drive
Brainerd MN 56401



website: www.AffinityRealEstate.com | email: info@affinityrealestate.com | office: 218-237-3333 | fax: 218-237-3377

Affinity
REAL ESTATE INC

\$609,900
MLS 6703756 Lake Home
11833 Maplewood Drive
Brainerd MN 56401



website: www.AffinityRealEstate.com | email: info@affinityrealestate.com | office: 218-237-3333 | fax: 218-237-3377

Affinity
REAL ESTATE INC

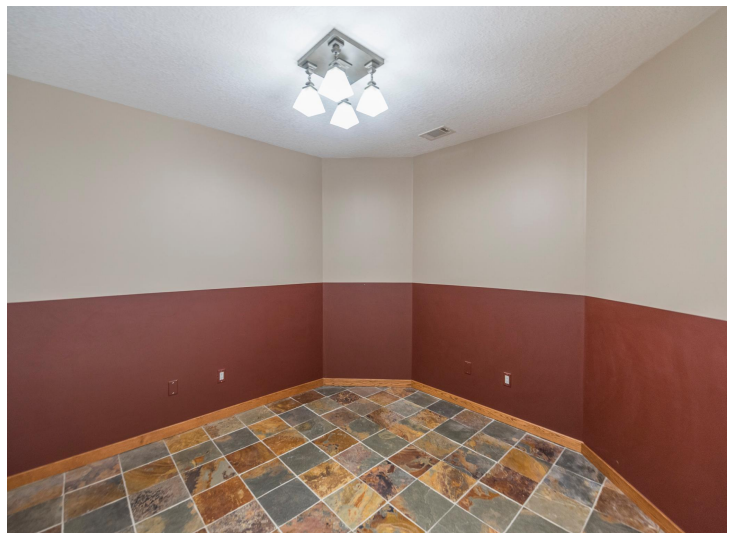
\$609,900
MLS 6703756 Lake Home
11833 Maplewood Drive
Brainerd MN 56401



website: www.AffinityRealEstate.com | email: info@affinityrealestate.com | office: 218-237-3333 | fax: 218-237-3377

Affinity
REAL ESTATE INC

\$609,900
MLS 6703756 Lake Home
11833 Maplewood Drive
Brainerd MN 56401



website: www.AffinityRealEstate.com | email: info@affinityrealestate.com | office: 218-237-3333 | fax: 218-237-3377

Affinity
REAL ESTATE INC

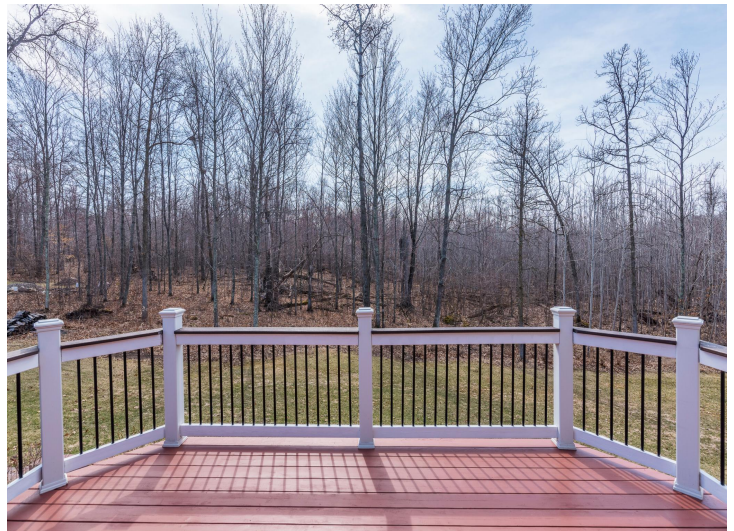
\$609,900
MLS 6703756 Lake Home
11833 Maplewood Drive
Brainerd MN 56401



website: www.AffinityRealEstate.com | email: info@affinityrealestate.com | office: 218-237-3333 | fax: 218-237-3377

Affinity
REAL ESTATE INC

\$609,900
MLS 6703756 Lake Home
11833 Maplewood Drive
Brainerd MN 56401



website: www.AffinityRealEstate.com | email: info@affinityrealestate.com | office: 218-237-3333 | fax: 218-237-3377

Affinity
REAL ESTATE INC

\$609,900
MLS 6703756 Lake Home
11833 Maplewood Drive
Brainerd MN 56401



website: www.AffinityRealEstate.com | email: info@affinityrealestate.com | office: 218-237-3333 | fax: 218-237-3377



\$609,900
 MLS 6703756 Lake Home
 11833 Maplewood Drive
 Brainerd MN 56401



FLOOR 2

GROSS INTERNAL AREA
FLOOR PLAN: 1,703 sq. ft. FLOOR PLAN: 1,829 sq. ft.
TOTAL: 3532 sq. ft.
SIZES AND DIMENSIONS ARE APPROXIMATE, ACTUAL MAY VARY



FLOOR 1

GROSS INTERNAL AREA
FLOOR PLAN: 1,703 sq. ft. FLOOR PLAN: 1,829 sq. ft.
TOTAL: 3532 sq. ft.
SIZES AND DIMENSIONS ARE APPROXIMATE. ACTUAL MAY VARY.



website: www.AffinityRealEstate.com | email: info@affinityrealestate.com | office: 218-237-3333 | fax: 218-237-3377



\$609,900
MLS 6703756 Lake Home
11833 Maplewood Drive
Brainerd MN 56401



website: www.AffinityRealEstate.com | email: info@affinityrealestate.com | office: 218-237-3333 | fax: 218-237-3377



\$609,900
 MLS 6703756 Lake Home
 11833 Maplewood Drive
 Brainerd MN 56401