



MLS 6703848 Land

\$25,900

2.77 Acres
Subdivided

XXX Castlewood Court
Breezy Point MN 56472

Status: Pending

Description:

Beautiful wooded lot with mature trees located in cul-de-sac in the heart of the Breezy Point area. This is centrally located in the Brainerd lakes area. Build your dream home and take advantage of amazing restaurants, great shopping opportunities, access to award winning golf courses, and the many area lakes. At the end of the day, enjoy the peace and quiet.

Additional Details:

Lot Acres	2.77
Lot Dimensions	132x356x552x562
School District	186
Taxes	\$288
Taxes with Assessments	\$288
Tax Year	2025

Additional Features:

Driving Directions:

From Breezy Point. North on CTY 11 to Bushmann Rd. Follow to Castlewood Drive on left. Property at end of cul-de-sac on left.



Listed By:
Coldwell Banker Realty

Affinity Real Estate Inc. participates in the Regional Multiple Listing Service of Minnesota, Inc Broker Reciprocity (sm) program, allowing us to display other broker's listings on our website. All properties are subject to prior sale, change or withdrawal.



Call Affinity Real Estate

218-237-3333

info@affinityrealestate.com



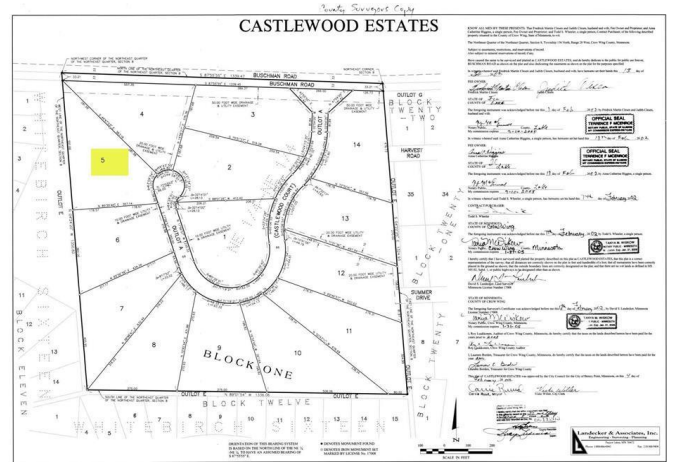
Affinity Real Estate - 600 Park Avenue South - Park Rapids MN 56470



website: www.AffinityRealEstate.com | email: info@affinityrealestate.com | office: 218-237-3333 | fax: 218-237-3377



\$25,900
 MLS 6703848 Land
 XXX Castlewood Court
 Breezy Point MN 56472



website: www.AffinityRealEstate.com | email: info@affinityrealestate.com | office: 218-237-3333 | fax: 218-237-3377



\$25,900
 MLS 6703848 Land
 XXX Castlewood Court
 Breezy Point MN 56472