



MLS 6703991 Residential

**\$279,900**

1,496 sq ft  
3 bedrooms  
2 baths

1238 26th Avenue  
Backus MN 56435

Status: Active

**Description:**

Experience the charm of cabin living—without the high taxes! Just a short stroll from Big Portage Lake access, known for its excellent panfishing, this beautifully renovated 3-bedroom, 2-bath home offers the perfect blend of comfort and nature. Nearly every inch has been updated, including new flooring, cabinets, shingles, spacious front and rear decks, and so much more. Multiple berry bushes located throughout the property make it perfect for canning your own jams!

A haven for nature lovers, this property is frequented by deer and turkey, offering delightful visits as they pass through the yard. Nestled in a prime location, you're close to multiple lakes, fine dining, and entertainment options—making this an ideal weekend getaway or a fantastic place to call home year-round.

**Additional Details:**

Year Built	1970
Lot Acres	1.04
Lot Dimensions	125x367x120x375
Garage Stalls	2
School District	2174
Taxes	\$768
Taxes with Assessments	\$834
Tax Year	2025

**Additional Features:**

**Basement:** Block, Crawl Space, Partial **Fuel:** Electric, Wood **Garage:** 2 **Heat:** Boiler, Forced Air, Hot Water, Radiant Floor **Sewer:** Tank with Drainage Field **Water:** Drilled **Air Conditioning:** Ductless Mini-Split

**Driving Directions:**

East of hwy 371 on hwy 87 5 miles to left on 26th ave to 1238 on right



Listed By:  
Coldwell Banker Realty

Affinity Real Estate Inc. participates in the Regional Multiple Listing Service of Minnesota, Inc Broker Reciprocity (sm) program, allowing us to display other broker's listings on our website. All properties are subject to prior sale, change or withdrawal.



**Call Affinity Real Estate**

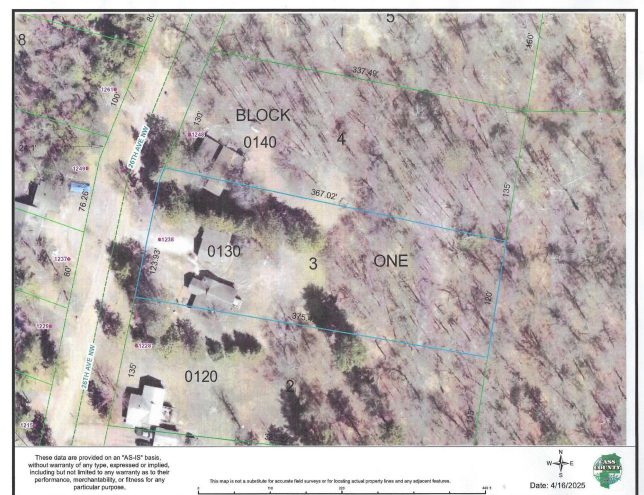
**218-237-3333**

**info@affinityrealestate.com**



**Affinity Real Estate - 600 Park Avenue South - Park Rapids MN 56470**





website: [www.AffinityRealEstate.com](http://www.AffinityRealEstate.com) | email: [info@affinityrealestate.com](mailto:info@affinityrealestate.com) | office: 218-237-3333 | fax: 218-237-3377



**\$279,900**  
MLS 6703991 Residential  
1238 26th Avenue  
Backus MN 56435



website: [www.AffinityRealEstate.com](http://www.AffinityRealEstate.com) | email: [info@affinityrealestate.com](mailto:info@affinityrealestate.com) | office: 218-237-3333 | fax:218-237-3377



**\$279,900**

MLS 6703991 Residential  
1238 26th Avenue  
Backus MN 56435

website: [www.AffinityRealEstate.com](http://www.AffinityRealEstate.com) | email: [info@affinityrealestate.com](mailto:info@affinityrealestate.com) | office: 218-237-3333 | fax:218-237-3377



**\$279,900**

MLS 6703991 Residential  
1238 26th Avenue  
Backus MN 56435

website: [www.AffinityRealEstate.com](http://www.AffinityRealEstate.com) | email: [info@affinityrealestate.com](mailto:info@affinityrealestate.com) | office: 218-237-3333 | fax:218-237-3377



**\$279,900**

MLS 6703991 Residential  
1238 26th Avenue  
Backus MN 56435

website: [www.AffinityRealEstate.com](http://www.AffinityRealEstate.com) | email: [info@affinityrealestate.com](mailto:info@affinityrealestate.com) | office: 218-237-3333 | fax:218-237-3377



**\$279,900**

MLS 6703991 Residential  
1238 26th Avenue  
Backus MN 56435

website: [www.AffinityRealEstate.com](http://www.AffinityRealEstate.com) | email: [info@affinityrealestate.com](mailto:info@affinityrealestate.com) | office: 218-237-3333 | fax:218-237-3377



**\$279,900**

MLS 6703991 Residential  
1238 26th Avenue  
Backus MN 56435

website: [www.AffinityRealEstate.com](http://www.AffinityRealEstate.com) | email: [info@affinityrealestate.com](mailto:info@affinityrealestate.com) | office: 218-237-3333 | fax:218-237-3377



**\$279,900**  
MLS 6703991 Residential  
1238 26th Avenue  
Backus MN 56435