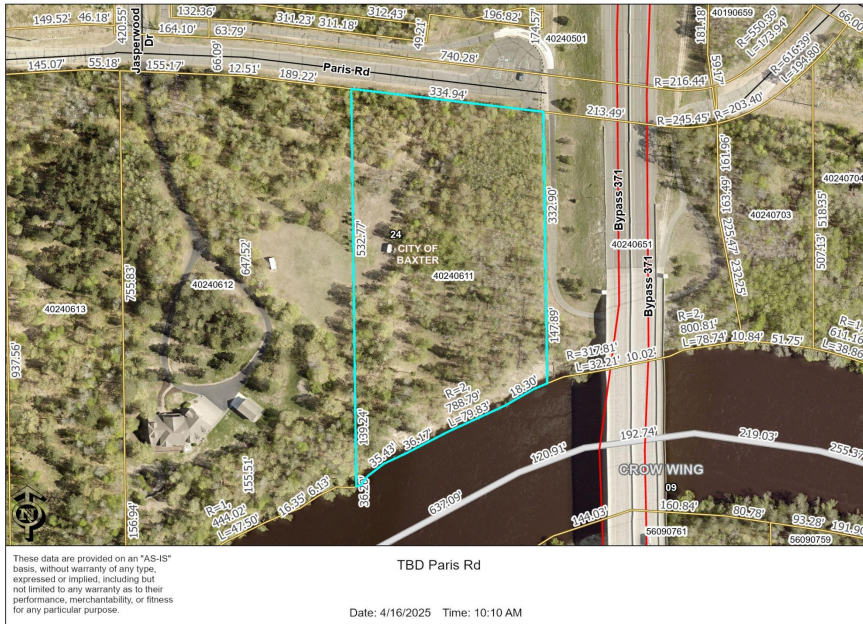




MLS 6704257 Lake Land

\$100,000



Description:

Bring your building plans to this beautiful 4.5 acre lot on the edge of Baxter, overlooking 366 feet of the Mississippi River! This lot is immediately adjacent to the paved Paul Bunyan Trail, with miles of hiking and adventures available right out your front door.

Additional Details:

Lot Acres	4.5
Lot Dimensions	366x703x334x493
School District	181
Taxes	\$432
Taxes with Assessments	\$432
Tax Year	2024

Additional Features:

Driving Directions:

From 371/210 in Baxter, South on 371, to Right on Highland Scenic, to Left at the roundabout onto Mapleton Rd, to Right on Jasperwood Dr, to Left on Paris Rd to property on Right.



Listed By:
Edina Realty, Inc.

Affinity Real Estate Inc. participates in the Regional Multiple Listing Service of Minnesota, Inc Broker Reciprocity (sm) program, allowing us to display other broker's listings on our website. All properties are subject to prior sale, change or withdrawal.



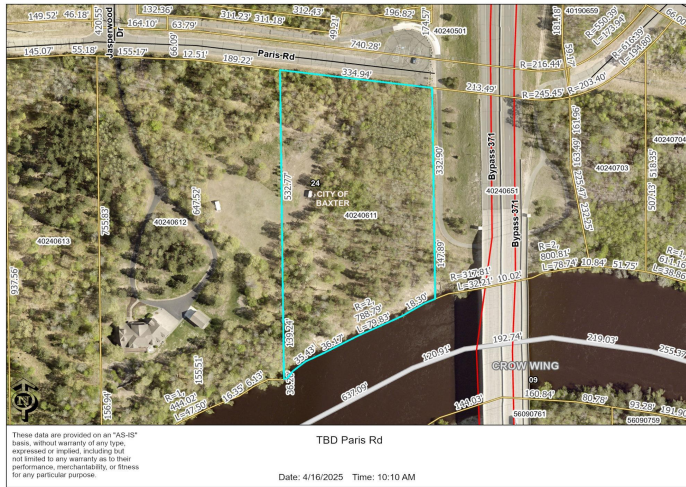
Call Affinity Real Estate

218-237-3333

info@affinityrealestate.com



Affinity Real Estate - 600 Park Avenue South - Park Rapids MN 56470



website: www.AffinityRealEstate.com | email: info@affinityrealestate.com | office: 218-237-3333 | fax: 218-237-3377



\$100,000
 MLS 6704257 Lake Land
 TBD Paris Road
 Baxter MN 56425