



MLS 6704258 Residential

\$459,000

1,710 sq ft
3 bedrooms
2 baths

16323 Pristine Pine Court
Brainerd MN 56401

Status: Pending

Description:

Welcome to your modern retreat built in 2020, this thoughtfully designed 1,700+ sqft home blends comfort, style, and privacy. Nestled on a spacious 0.9-acre lot and backing up to 17 acres of peaceful out lot, you'll enjoy quiet living with nature as your backdrop. Inside, you'll find insulated interior walls for added sound dampening, creating a calm and private atmosphere throughout the home. The open concept layout flows effortlessly between the kitchen, dining, and living areas-perfect for both everyday living and entertaining. A luxurious 6-foot tub in the guest bathroom offers the perfect place to unwind. Step outside to your 3-stall heated garage, ideal for cold weather convenience, plus a handy storage shed for all your tools and toys. Whether you're relaxing in the backyard or exploring the outdoors, you're just a short walk from the scenic Paul Bunyan Trail—perfect for biking, walking, and year-round recreation. Buyers and agents to verify all information.

Additional Details:

Year Built	2020
Lot Acres	0.9
Lot Dimensions	126x183x115x19x232x147
Garage Stalls	3
School District	181
Taxes	\$2,203
Taxes with Assessments	\$2,228
Tax Year	2025

Additional Features:

Basement: Slab **Fuel:** Natural Gas **Garage:** 3 **Heat:** Forced Air **Sewer:** Mound Septic **Water:** Well **Air Conditioning:** Central Air

Driving Directions:

North on 371, right on wise road, right on Sugarberry Creek, left on Pristine Pine Court, second house on the left.



Listed By:
Keller Williams Realty Integrity Lakes

Affinity Real Estate Inc. participates in the Regional Multiple Listing Service of Minnesota, Inc Broker Reciprocity (sm) program, allowing us to display other broker's listings on our website. All properties are subject to prior sale, change or withdrawal.



Call Affinity Real Estate

218-237-3333

info@affinityrealestate.com



Affinity Real Estate - 600 Park Avenue South - Park Rapids MN 56470



website: www.AffinityRealEstate.com | email: info@affinityrealestate.com | office: 218-237-3333 | fax: 218-237-3377

Affinity
REAL ESTATE INC

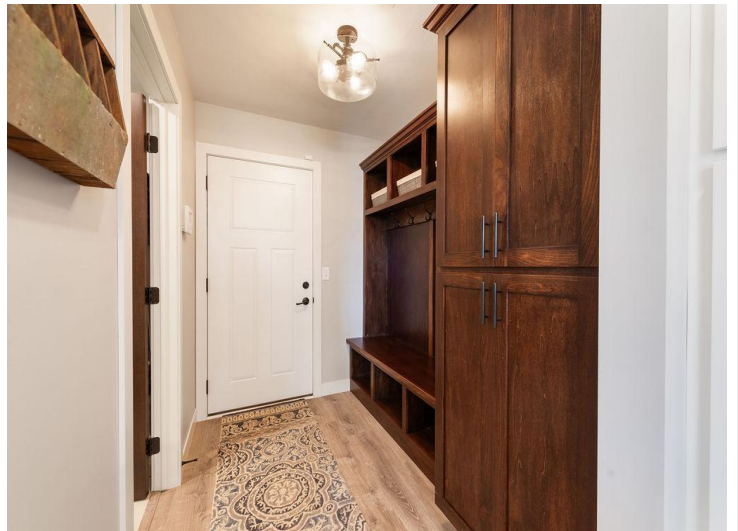
\$459,000
MLS 6704258 Residential
16323 Pristine Pine Court
Brainerd MN 56401



website: www.AffinityRealEstate.com | email: info@affinityrealestate.com | office: 218-237-3333 | fax: 218-237-3377



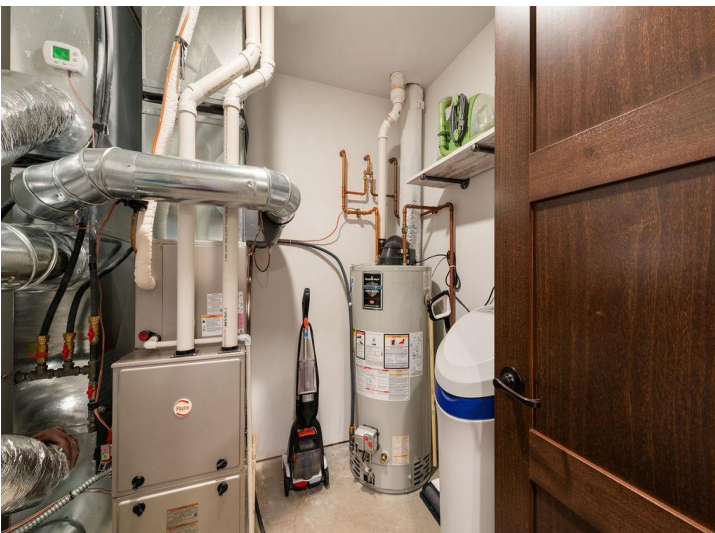
\$459,000
 MLS 6704258 Residential
 16323 Pristine Pine Court
 Brainerd MN 56401



website: www.AffinityRealEstate.com | email: info@affinityrealestate.com | office: 218-237-3333 | fax: 218-237-3377

Affinity
REAL ESTATE INC

\$459,000
MLS 6704258 Residential
16323 Pristine Pine Court
Brainerd MN 56401



website: www.AffinityRealEstate.com | email: info@affinityrealestate.com | office: 218-237-3333 | fax: 218-237-3377



\$459,000
 MLS 6704258 Residential
 16323 Pristine Pine Court
 Brainerd MN 56401



website: www.AffinityRealEstate.com | email: info@affinityrealestate.com | office: 218-237-3333 | fax: 218-237-3377

Affinity
REAL ESTATE INC

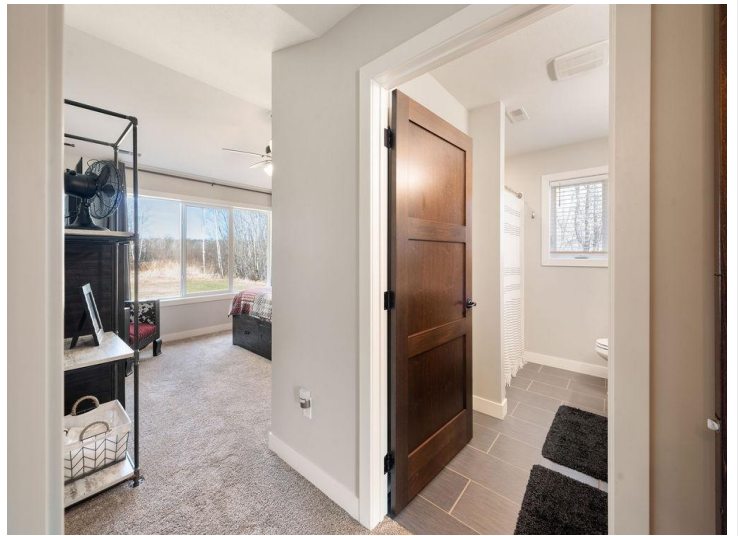
\$459,000
MLS 6704258 Residential
16323 Pristine Pine Court
Brainerd MN 56401



website: www.AffinityRealEstate.com | email: info@affinityrealestate.com | office: 218-237-3333 | fax: 218-237-3377

Affinity
REAL ESTATE INC

\$459,000
MLS 6704258 Residential
16323 Pristine Pine Court
Brainerd MN 56401



website: www.AffinityRealEstate.com | email: info@affinityrealestate.com | office: 218-237-3333 | fax: 218-237-3377

Affinity
REAL ESTATE INC

\$459,000
MLS 6704258 Residential
16323 Pristine Pine Court
Brainerd MN 56401



website: www.AffinityRealEstate.com | email: info@affinityrealestate.com | office: 218-237-3333 | fax: 218-237-3377

Affinity
REAL ESTATE INC

\$459,000
MLS 6704258 Residential
16323 Pristine Pine Court
Brainerd MN 56401



website: www.AffinityRealEstate.com | email: info@affinityrealestate.com | office: 218-237-3333 | fax: 218-237-3377

Affinity
REAL ESTATE INC

\$459,000
MLS 6704258 Residential
16323 Pristine Pine Court
Brainerd MN 56401



website: www.AffinityRealEstate.com | email: info@affinityrealestate.com | office: 218-237-3333 | fax:218-237-3377



\$459,000

MLS 6704258 Residential
16323 Pristine Pine Court
Brainerd MN 56401