



MLS 6704521 Land

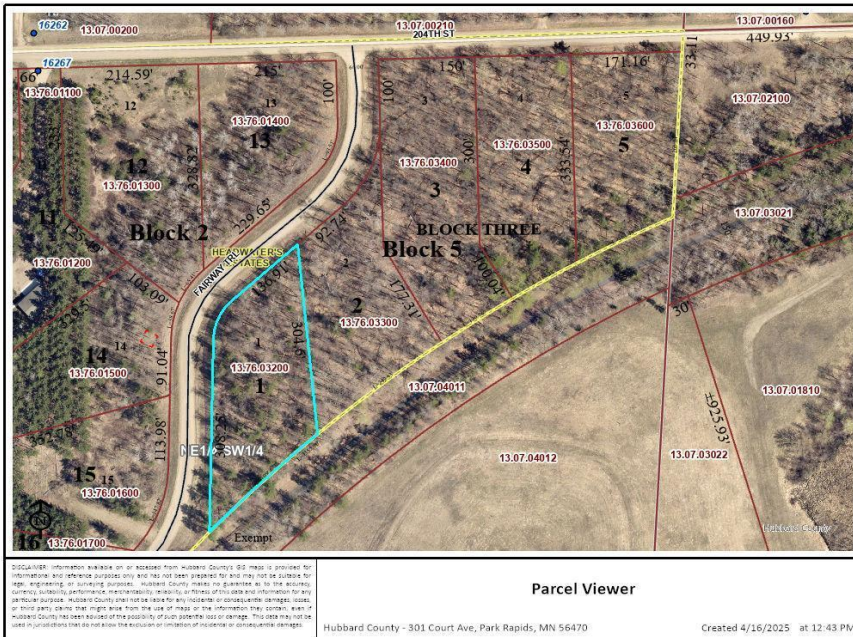
**\$159,000**

1.13 Acres

Other

TBD Fairway Trail  
Park Rapids MN 56470

Status: Pending



#### Description:

Nicely wooded building lots being sold all together. There are a total of five lots that are located right on the Heartland Trail in a very desirable area just North of Park Rapids. These lots are all surveyed and ready to be developed. Truly a rare opportunity.

#### Additional Details:

Lot Acres	1.13
Lot Dimensions	See Survey in Documents
School District	309
Taxes	\$76
Taxes with Assessments	\$76
Tax Year	2024

#### Additional Features:

#### Driving Directions:

Go North on County Road 1 to a right on 204th St. The lots border 204th and go down Fairway Trail on the right.



Listed By:  
Dane Arthur Real Estate Agency-Park Rapids

Affinity Real Estate Inc. participates in the Regional Multiple Listing Service of Minnesota, Inc Broker Reciprocity (sm) program, allowing us to display other broker's listings on our website. All properties are subject to prior sale, change or withdrawal.



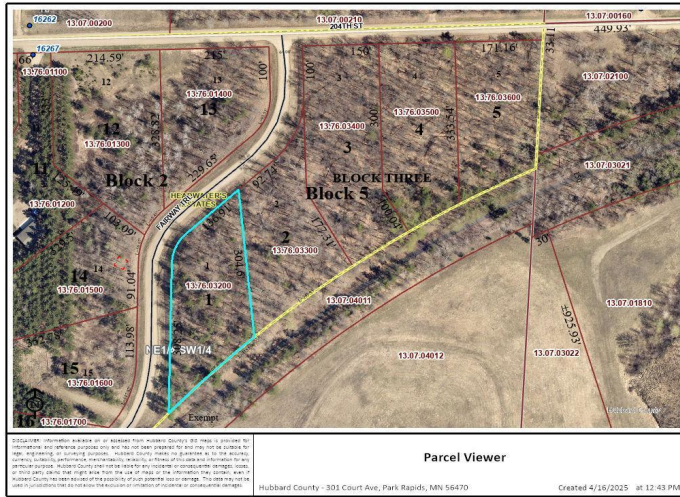
Call Affinity Real Estate

**218-237-3333**

[info@affinityrealestate.com](mailto:info@affinityrealestate.com)



Affinity Real Estate - 600 Park Avenue South - Park Rapids MN 56470



website: [www.AffinityRealEstate.com](http://www.AffinityRealEstate.com) | email: [info@affinityrealestate.com](mailto:info@affinityrealestate.com) | office: 218-237-3333 | fax:218-237-3377



**\$159,000**  
MLS 6704521 Land  
TBD Fairway Trail  
Park Rapids MN 56470