



MLS 6704591 Lake Home

**\$764,900**

2,846 sq ft  
3 bedrooms  
3 baths

10179 Mounds Point Drive  
Cass Lake MN 56633

Waterfront: Leech

Status: Active

#### Description:

Stunning west-facing home with sunset views on Leech Lake with 100 ft of sandy shoreline. Discover breathtaking big water views and unforgettable sunsets from this spacious home nestled on a level lot with a short set of stairs at the lakeside. Designed for comfortable lakeside living, this 3,000 square foot, three-level home welcomes you with a charming 3-season porch that leads to a bright and airy sunroom. The main floor boasts an open-concept design with expansive windows framing the lake, a large bedroom, main-floor laundry, and a full bathroom. Upstairs, the loft offers additional living space, stunning lake views, and another large bedroom with a half-bath. The lower level features a spacious third bedroom that would benefit from the addition of an egress window. The compliant septic system is sized for a three-bedroom home. There is a large recreation room, a  $\frac{3}{4}$  bath, a cedar sauna, a hobby room, and a utility room with a generator panel. There is a whole house generator that is included in the sale. Outside, you'll find a paved driveway, heated and insulated three-car garage with openers, along with an additional two-car garage, offering ample storage for vehicles, boats, and lake toys. Don't miss the chance to experience serene lakeside living with unmatched views from this exceptional Leech Lake retreat!

#### Additional Details:

Year Built	1997
Lot Acres	0.7
Lot Dimensions	100x310
Garage Stalls	5
School District	115
Taxes	\$5,444
Taxes with Assessments	\$5,510
Tax Year	2025

#### Additional Features:

**Fuel:** Electric, Propane **Heat:** Baseboard, Fireplace(s)

#### Driving Directions:

From Walker take MN-371 to right onto Oak Point Rd NW to left onto E Oak Point Rd. Go left onto Mounds Point Dr NW, road turns right, property on left, 10179 Mounds Point Drive NW.



Listed By:  
Edina Realty, Inc.

Affinity Real Estate Inc. participates in the Regional Multiple Listing Service of Minnesota, Inc Broker Reciprocity (sm) program, allowing us to display other broker's listings on our website. All properties are subject to prior sale, change or withdrawal.



**Call Affinity Real Estate**

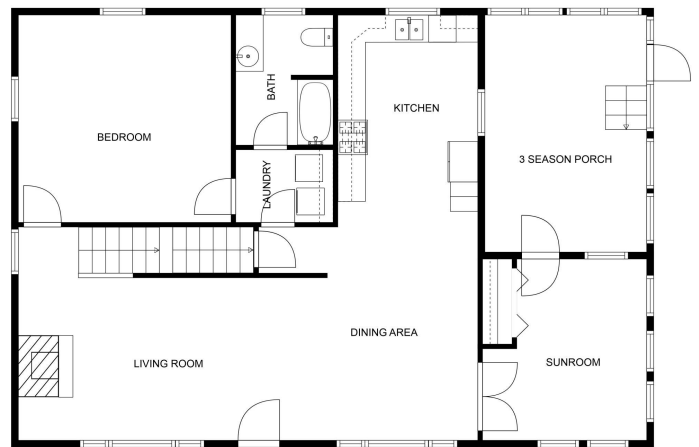
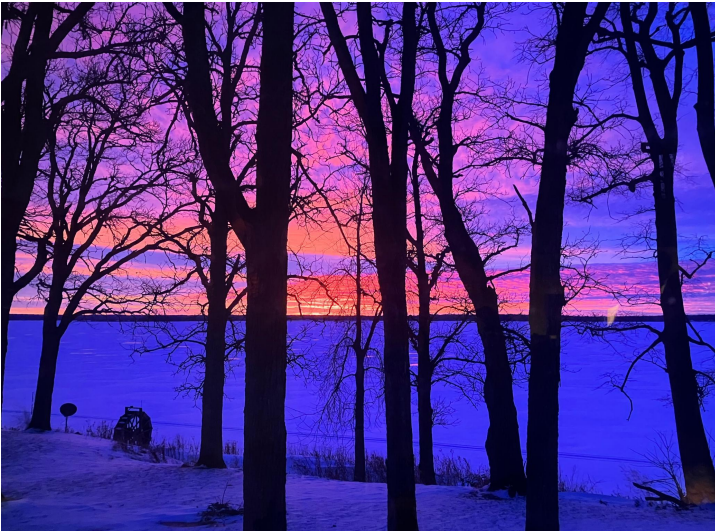
**218-237-3333**

**info@affinityrealestate.com**



**Affinity Real Estate - 600 Park Avenue South - Park Rapids MN 56470**





FLOOR PLAN CREATED BY CURBCASA APP. MEASUREMENTS DEEMED HIGHLY RELIABLE BUT NOT GUARANTEED.

website: [www.AffinityRealEstate.com](http://www.AffinityRealEstate.com) | email: [info@affinityrealestate.com](mailto:info@affinityrealestate.com) | office: 218-237-3333 | fax: 218-237-3377

**Affinity**  
REAL ESTATE INC

**\$764,900**  
MLS 6704591 Lake Home  
10179 Mounds Point Drive  
Cass Lake MN 56633





website: [www.AffinityRealEstate.com](http://www.AffinityRealEstate.com) | email: [info@affinityrealestate.com](mailto:info@affinityrealestate.com) | office: 218-237-3333 | fax: 218-237-3377



**\$764,900**  
MLS 6704591 Lake Home  
10179 Mounds Point Drive  
Cass Lake MN 56633





website: [www.AffinityRealEstate.com](http://www.AffinityRealEstate.com) | email: [info@affinityrealestate.com](mailto:info@affinityrealestate.com) | office: 218-237-3333 | fax: 218-237-3377

**Affinity**  
REAL ESTATE INC

**\$764,900**  
MLS 6704591 Lake Home  
10179 Mounds Point Drive  
Cass Lake MN 56633



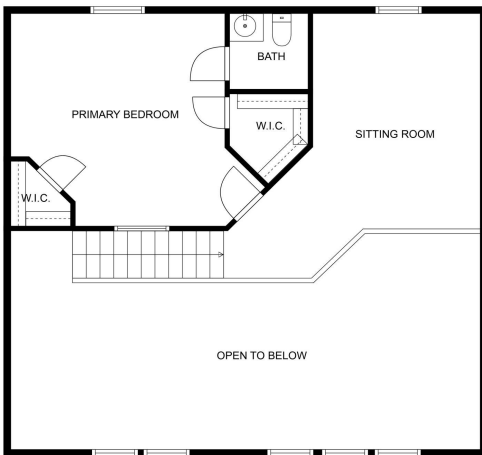


website: [www.AffinityRealEstate.com](http://www.AffinityRealEstate.com) | email: [info@affinityrealestate.com](mailto:info@affinityrealestate.com) | office: 218-237-3333 | fax: 218-237-3377

**Affinity**  
REAL ESTATE INC

**\$764,900**  
MLS 6704591 Lake Home  
10179 Mounds Point Drive  
Cass Lake MN 56633





FLOOR PLAN CREATED BY CUBICASA APP. MEASUREMENTS DEEMED HIGHLY RELIABLE BUT NOT GUARANTEED.

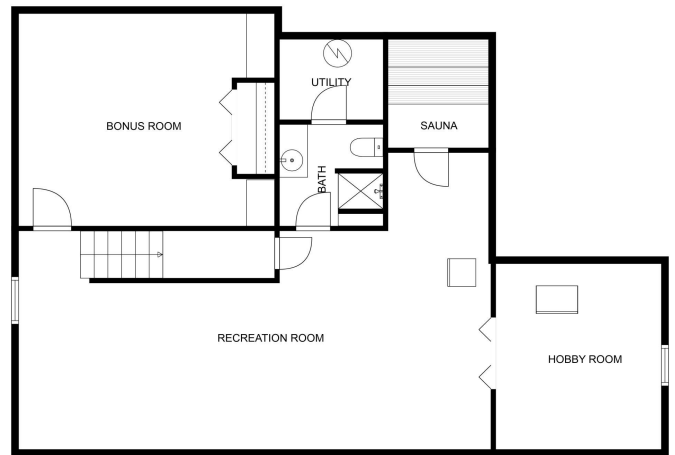


website: [www.AffinityRealEstate.com](http://www.AffinityRealEstate.com) | email: [info@affinityrealestate.com](mailto:info@affinityrealestate.com) | office: 218-237-3333 | fax: 218-237-3377

**Affinity**  
REAL ESTATE INC

**\$764,900**  
MLS 6704591 Lake Home  
10179 Mounds Point Drive  
Cass Lake MN 56633





FLOOR PLAN CREATED BY CURICASA APP. MEASUREMENTS DEEMED HIGHLY RELIABLE BUT NOT GUARANTEED.



website: [www.AffinityRealEstate.com](http://www.AffinityRealEstate.com) | email: [info@affinityrealestate.com](mailto:info@affinityrealestate.com) | office: 218-237-3333 | fax: 218-237-3377

**Affinity**  
REAL ESTATE INC

**\$764,900**  
MLS 6704591 Lake Home  
10179 Mounds Point Drive  
Cass Lake MN 56633



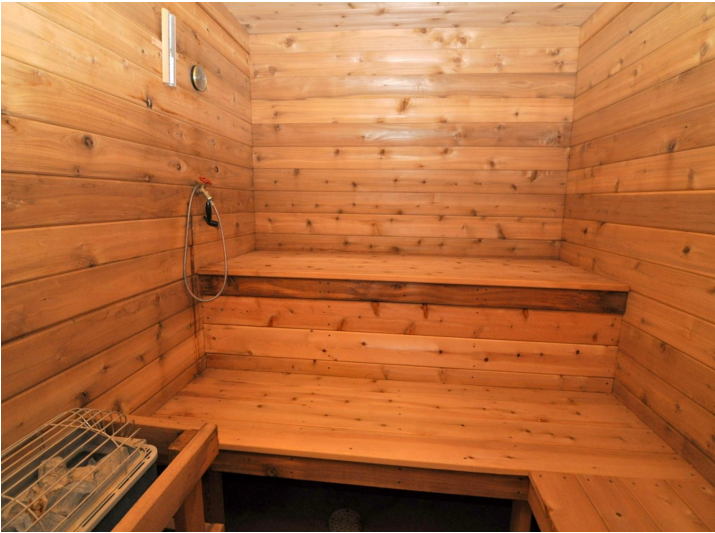


website: [www.AffinityRealEstate.com](http://www.AffinityRealEstate.com) | email: [info@affinityrealestate.com](mailto:info@affinityrealestate.com) | office: 218-237-3333 | fax: 218-237-3377

**Affinity**  
REAL ESTATE INC

**\$764,900**  
MLS 6704591 Lake Home  
10179 Mounds Point Drive  
Cass Lake MN 56633





website: [www.AffinityRealEstate.com](http://www.AffinityRealEstate.com) | email: [info@affinityrealestate.com](mailto:info@affinityrealestate.com) | office: 218-237-3333 | fax: 218-237-3377



**\$764,900**  
 MLS 6704591 Lake Home  
 10179 Mounds Point Drive  
 Cass Lake MN 56633





website: [www.AffinityRealEstate.com](http://www.AffinityRealEstate.com) | email: [info@affinityrealestate.com](mailto:info@affinityrealestate.com) | office: 218-237-3333 | fax: 218-237-3377



**\$764,900**  
 MLS 6704591 Lake Home  
 10179 Mounds Point Drive  
 Cass Lake MN 56633





website: [www.AffinityRealEstate.com](http://www.AffinityRealEstate.com) | email: [info@affinityrealestate.com](mailto:info@affinityrealestate.com) | office: 218-237-3333 | fax: 218-237-3377



**\$764,900**

MLS 6704591 Lake Home  
10179 Mounds Point Drive  
Cass Lake MN 56633



website: [www.AffinityRealEstate.com](http://www.AffinityRealEstate.com) | email: [info@affinityrealestate.com](mailto:info@affinityrealestate.com) | office: 218-237-3333 | fax:218-237-3377



**\$764,900**

MLS 6704591 Lake Home  
10179 Mounds Point Drive  
Cass Lake MN 56633