



MLS 6704606 Lake Home

\$235,000

655 sq ft
1 bedrooms
1 baths

18600 Terry Lane
Osage MN 56570

Waterfront: Blueberry Lake (Green
Valley Twp.)

Status: Pending

Description:

Discover the perfect all-in-one property with this incredible 7 acre Blueberry Lake escape! Sitting on over 500 feet of shoreline along beautiful Blueberry Lake near Park Rapids, this property offers acreage, waterfront, a clean, move-in ready home, and abundant storage. As a bonus it borders more than 300 acres of county land. Blueberry Lake spans 83 acres and is known for excellent panfish and northern pike fishing. For hunting enthusiasts, this location is ideal, offering deer, grouse, turkey, and bear hunting opportunities. The versatile shouse features 1 bedroom, 1 bathroom, kitchen and living area, a loft for additional storage or sleeping space, and an oversized garage with 16-foot ceilings. Whether you're seeking a weekend getaway or a private outdoor retreat, this property has it all. Don't miss your chance to own a slice of the Northwoods!

Additional Details:

Year Built	1998
Lot Acres	7
Lot Dimensions	Irregular
Garage Stalls	2
School District	821
Taxes	\$1,428
Taxes with Assessments	\$1,488
Tax Year	2025

Additional Features:

Fuel: Electric, Propane **Heat:** Dual, Forced Air, Radiant Floor

Driving Directions:

From 34/71 intersection head south for 4 miles and turn west. Continue for 10 miles and turn south on County 125. Continue for 1 mile to 190th St and turn west. Continue for 1 mile and turn south on Terry Lane. Follow signs to property on right.



Listed By:
Keller Williams Realty Professionals

Affinity Real Estate Inc. participates in the Regional Multiple Listing Service of Minnesota, Inc Broker Reciprocity (sm) program, allowing us to display other broker's listings on our website. All properties are subject to prior sale, change or withdrawal.



Call Affinity Real Estate

218-237-3333

info@affinityrealestate.com



Affinity Real Estate - 600 Park Avenue South - Park Rapids MN 56470



website: www.AffinityRealEstate.com | email: info@affinityrealestate.com | office: 218-237-3333 | fax: 218-237-3377

Affinity
REAL ESTATE INC

\$235,000
MLS 6704606 Lake Home
18600 Terry Lane
Osage MN 56570



website: www.AffinityRealEstate.com | email: info@affinityrealestate.com | office: 218-237-3333 | fax: 218-237-3377

Affinity
REAL ESTATE INC

\$235,000
MLS 6704606 Lake Home
18600 Terry Lane
Osage MN 56570



website: www.AffinityRealEstate.com | email: info@affinityrealestate.com | office: 218-237-3333 | fax: 218-237-3377

Affinity
REAL ESTATE INC

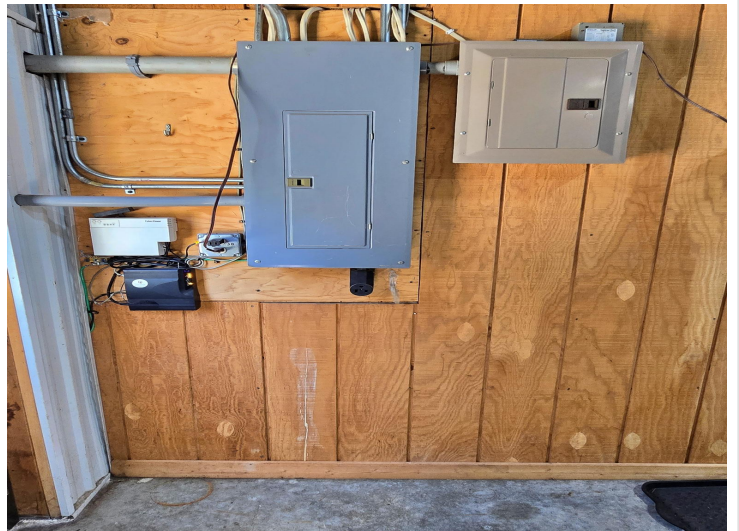
\$235,000
MLS 6704606 Lake Home
18600 Terry Lane
Osage MN 56570



website: www.AffinityRealEstate.com | email: info@affinityrealestate.com | office: 218-237-3333 | fax: 218-237-3377



\$235,000
 MLS 6704606 Lake Home
 18600 Terry Lane
 Osage MN 56570



website: www.AffinityRealEstate.com | email: info@affinityrealestate.com | office: 218-237-3333 | fax: 218-237-3377



\$235,000
 MLS 6704606 Lake Home
 18600 Terry Lane
 Osage MN 56570