



MLS 6704611 Residential

\$712,000

3,703 sq ft
5 bedrooms
4 baths

26540 Edna Lake Road
Nisswa MN 56468

Status: Active

Description:

Looking for a quiet getaway, a lifestyle change or a source for additional income? This is the home for you.

Quiet Getaway/2nd Home: Private 1.77 acres, heavily wooded lot. Quiet neighborhood. Access to lakes, parks and Paul Bunyan Trail.

Lifestyle Change/Retirement - lots of room to host family and friends, Close to restaurants and stores. Many lakes access and Walking/Biking trails within minutes of the home.

Source of income/Airbnb: Close to Downtown Nisswa, many lakes, Waterpark, and Golfing.

There are many options with this home. Book a tour of this beautiful custom-built home that has many possibilities!

Additional Details:

Year Built	2022
Lot Acres	1.77
Lot Dimensions	150x465x175x543
Garage Stalls	3
School District	181
Taxes	\$4,321
Taxes with Assessments	\$4,346
Tax Year	2025

Additional Features:

Fuel: Natural Gas **Heat:** Boiler, Forced Air, Fireplace(s), Radiant Floor

Driving Directions:

From Nisswa, take state highway 371 N. A left onto County Rd 29 to an immediate left onto Edna Lake Road and follow to the property on the left at 26540 Edna Lake Rd



Listed By:
Lakes Sotheby's International

Affinity Real Estate Inc. participates in the Regional Multiple Listing Service of Minnesota, Inc Broker Reciprocity (sm) program, allowing us to display other broker's listings on our website. All properties are subject to prior sale, change or withdrawal.



Call Affinity Real Estate

218-237-3333

info@affinityrealestate.com



Affinity Real Estate - 600 Park Avenue South - Park Rapids MN 56470



website: www.AffinityRealEstate.com | email: info@affinityrealestate.com | office: 218-237-3333 | fax: 218-237-3377



\$712,000
 MLS 6704611 Residential
 26540 Edna Lake Road
 Nisswa MN 56468



website: www.AffinityRealEstate.com | email: info@affinityrealestate.com | office: 218-237-3333 | fax: 218-237-3377



\$712,000
MLS 6704611 Residential
26540 Edna Lake Road
Nisswa MN 56468



website: www.AffinityRealEstate.com | email: info@affinityrealestate.com | office: 218-237-3333 | fax: 218-237-3377

Affinity
REAL ESTATE INC

\$712,000
MLS 6704611 Residential
26540 Edna Lake Road
Nisswa MN 56468



website: www.AffinityRealEstate.com | email: info@affinityrealestate.com | office: 218-237-3333 | fax: 218-237-3377

Affinity
REAL ESTATE INC

\$712,000
MLS 6704611 Residential
26540 Edna Lake Road
Nisswa MN 56468



website: www.AffinityRealEstate.com | email: info@affinityrealestate.com | office: 218-237-3333 | fax: 218-237-3377

Affinity
REAL ESTATE INC

\$712,000
MLS 6704611 Residential
26540 Edna Lake Road
Nisswa MN 56468



website: www.AffinityRealEstate.com | email: info@affinityrealestate.com | office: 218-237-3333 | fax: 218-237-3377



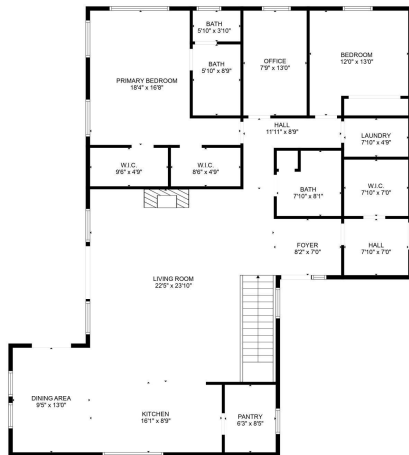
\$712,000
 MLS 6704611 Residential
 26540 Edna Lake Road
 Nisswa MN 56468



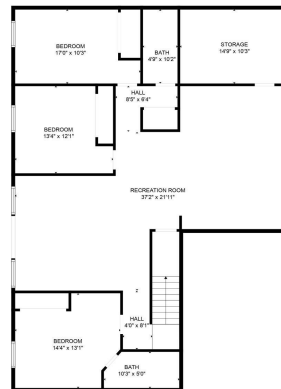
website: www.AffinityRealEstate.com | email: info@affinityrealestate.com | office: 218-237-3333 | fax: 218-237-3377

Affinity
REAL ESTATE INC

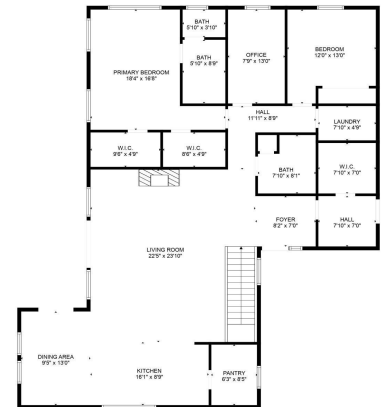
\$712,000
MLS 6704611 Residential
26540 Edna Lake Road
Nisswa MN 56468



FLOOR PLAN CREATED BY CUBICASA APP. MEASUREMENTS DEEMED HIGHLY RELIABLE BUT NOT GUARANTEED.

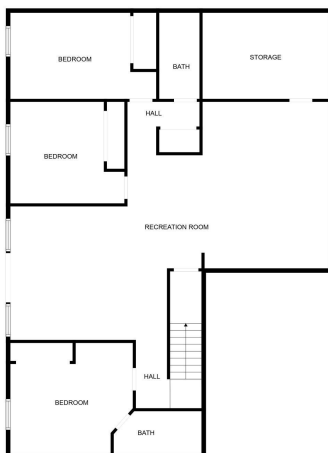


FLOOR 1



FLOOR 2

FLOOR PLAN CREATED BY CUBICASA APP. MEASUREMENTS DEEMED HIGHLY RELIABLE BUT NOT GUARANTEED.



FLOOR PLAN CREATED BY CUBICASA APP. MEASUREMENTS DEEMED HIGHLY RELIABLE BUT NOT GUARANTEED.

website: www.AffinityRealEstate.com | email: info@affinityrealestate.com | office: 218-237-3333 | fax: 218-237-3377



\$712,000
MLS 6704611 Residential
26540 Edna Lake Road
Nisswa MN 56468