



MLS 6704733 Land

**\$54,900**

2.5 Acres  
Subdivided

Lot 3, Block 1 Outback Trail  
Brainerd MN 56401

Status: Pending



#### Description:

Conveniently located 2.5 acre lot just outside of Brainerd and Baxter is perfect for building. Enjoy the cul-de-sac location, cleared lot ready and visioned for a house and shed area and services with electrical.

#### Additional Details:

Lot Acres	2.5
Lot Dimensions	105 x 595 x 105 x 594
School District	181
Taxes	\$302
Taxes with Assessments	\$302
Tax Year	2025

#### Additional Features:

#### Driving Directions:

Take Highway 25 (N) towards Merrifield, (Left) on Legionville Road, Approx. 1/2 Mile, (Right) on Outback Trail, Lot is on left w/sign.



Listed By:  
Edina Realty, Inc.

Affinity Real Estate Inc. participates in the Regional Multiple Listing Service of Minnesota, Inc Broker Reciprocity (sm) program, allowing us to display other broker's listings on our website. All properties are subject to prior sale, change or withdrawal.



Call Affinity Real Estate

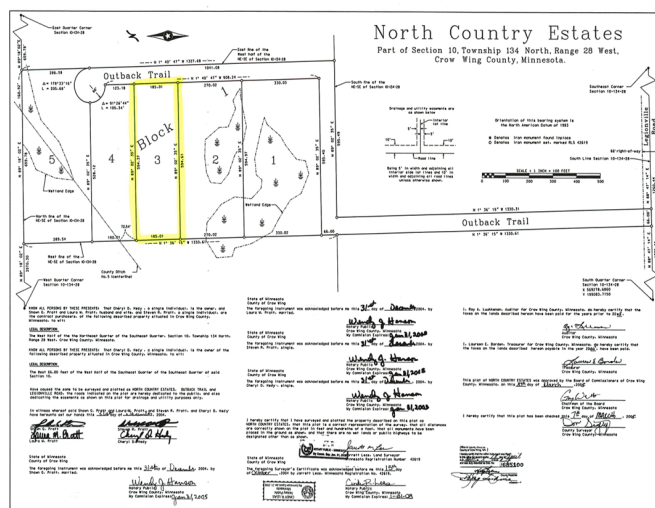
**218-237-3333**

[info@affinityrealestate.com](mailto:info@affinityrealestate.com)

MLS



Affinity Real Estate - 600 Park Avenue South - Park Rapids MN 56470



Page 2 of 2