



MLS 6704735 Residential

\$52,000

788 sq ft
2 bedrooms
1 baths

317 Maple Avenue
Cass Lake MN 56633

Status: Active

Description:

Cass Lake home with a great location and within walking distance to the elementary school and government center. Located on a spacious corner lot with 2 bedrooms and 1 full bath and a detached garage. Neat and clean galley kitchen with a separate mudroom and hookups for a washer and dryer are there for your convenience. Investors! What a great investment property with long term renters to bring that monthly income in. Whether a new homeowner or an investor, this property is worth a look! Call today for a personal tour!

Additional Details:

| | |
|------------------------|----------|
| Year Built | 1912 |
| Lot Acres | 0.16 |
| Lot Dimensions | 51 x 140 |
| Garage Stalls | 1 |
| School District | 115 |
| Taxes | \$914 |
| Taxes with Assessments | \$914 |
| Tax Year | 2025 |

Additional Features:

Basement: Crawl Space **Fuel:** Electric, Propane **Garage:** 1 **Heat:** Forced Air **Sewer:** City Sewer/Connected **Water:** City Water/Connected **Air Conditioning:** Window Unit(s)

Driving Directions:

From Bemidji, travel east on US 2 to Cass Lake and turn right onto Maple Avenue NE. Follow to the corner of 4th and Maple Avenue NE #317



Listed By:
Affinity Real Estate Inc.

Affinity Real Estate Inc. participates in the Regional Multiple Listing Service of Minnesota, Inc Broker Reciprocity (sm) program, allowing us to display other broker's listings on our website. All properties are subject to prior sale, change or withdrawal.



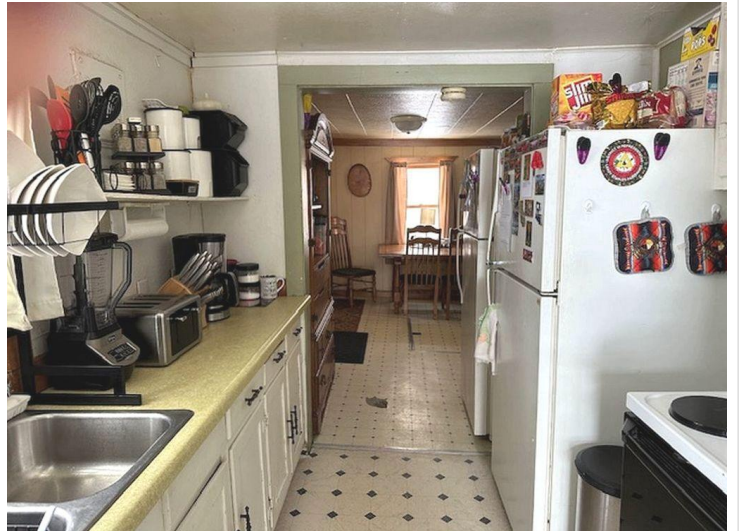
Call Affinity Real Estate

218-237-3333

info@affinityrealestate.com



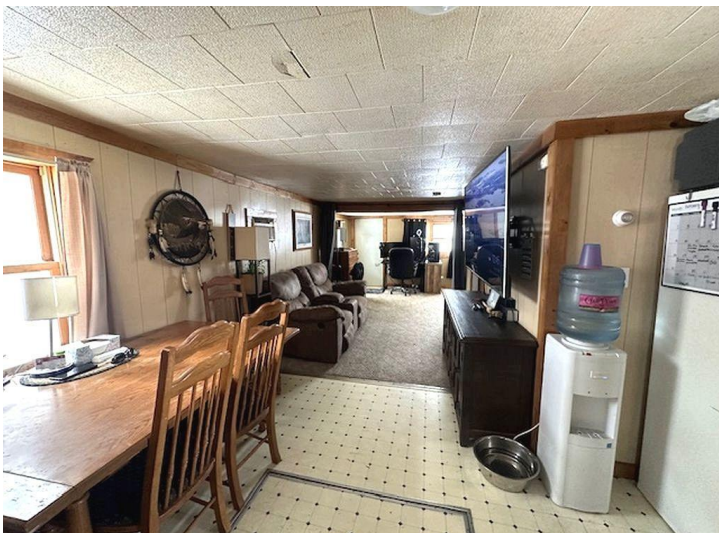
Affinity Real Estate - 600 Park Avenue South - Park Rapids MN 56470



website: www.AffinityRealEstate.com | email: info@affinityrealestate.com | office: 218-237-3333 | fax:218-237-3377



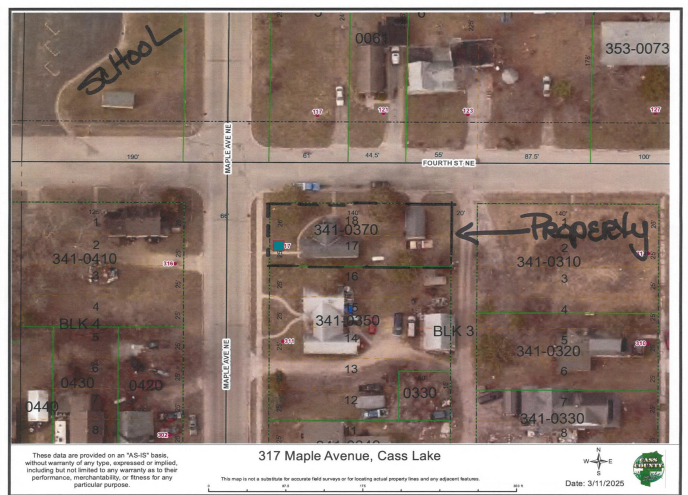
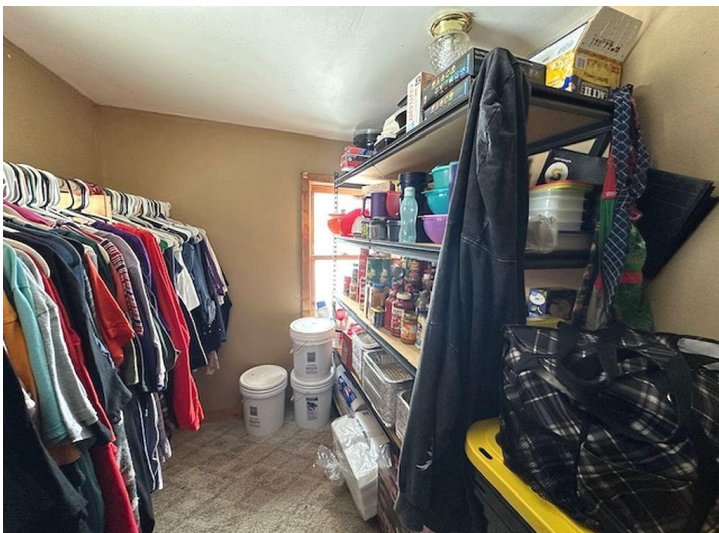
\$52,000
MLS 6704735 Residential
317 Maple Avenue
Cass Lake MN 56633



website: www.AffinityRealEstate.com | email: info@affinityrealestate.com | office: 218-237-3333 | fax: 218-237-3377

Affinity
REAL ESTATE INC

\$52,000
MLS 6704735 Residential
317 Maple Avenue
Cass Lake MN 56633



website: www.AffinityRealEstate.com | email: info@affinityrealestate.com | office: 218-237-3333 | fax: 218-237-3377

Affinity
REAL ESTATE INC

\$52,000
MLS 6704735 Residential
317 Maple Avenue
Cass Lake MN 56633



website: www.AffinityRealEstate.com | email: info@affinityrealestate.com | office: 218-237-3333 | fax:218-237-3377



\$52,000
MLS 6704735 Residential
317 Maple Avenue
Cass Lake MN 56633