



MLS 6704740 Lake Home

\$345,000

1,144 sq ft
3 bedrooms
2 baths

33684 Anderson Court
Crosslake MN 56442

Waterfront: Cross Lake Reservoir

Status: Hold

Description:

Lake Access And Dock Space on Crosslake/WFC!! Don't miss out on this incredible opportunity located in Crosslake, MN!! This property features lake access and dock space on Crosslake of The Whitefish Chain of lakes!! The access lot is just a short walk from the home and you have your own dedicated dock space to keep your boat!! Outside this property features a nice level lot, mature trees, a detached 2 car garage, two decks and paved driveway!! Inside this home features a primary bedroom with primary bathroom and walk in closet, a nice living room and dining room spaces, a kitchen with ample cabinet space, dedicated laundry room space, a 2nd and 3rd bedroom, full bath. This property is conveniently located just minutes from Crosslake, several lakes, golf courses, dining options and so much more!! Start exploring the Whitefish Chain Of Lakes today!!

Additional Details:

Year Built	1991
Lot Acres	0.96
Lot Dimensions	210x200x210x200
Garage Stalls	2
School District	186
Taxes	\$1,563
Taxes with Assessments	\$1,588
Tax Year	2025

Additional Features:

Fuel: Natural Gas **Heat:** Forced Air

Driving Directions:

From Crosslake go South on County Road 3 to a Right onto County Road 103 to a Right onto Anderson Court to the property on the Right located at 33684 Anderson Court.



Listed By:
Edina Realty, Inc.

Affinity Real Estate Inc. participates in the Regional Multiple Listing Service of Minnesota, Inc Broker Reciprocity (sm) program, allowing us to display other broker's listings on our website. All properties are subject to prior sale, change or withdrawal.



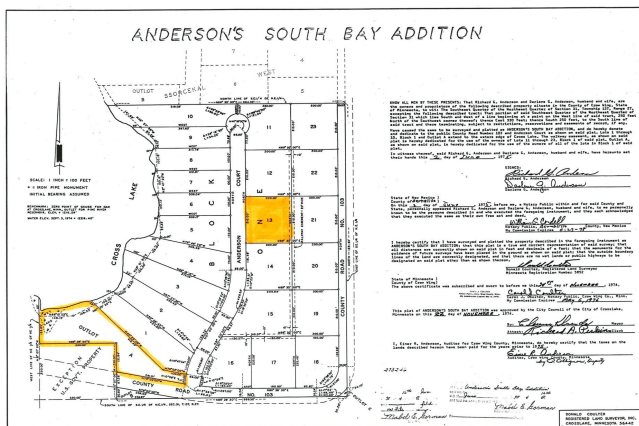
Call Affinity Real Estate

218-237-3333

info@affinityrealestate.com



Affinity Real Estate - 600 Park Avenue South - Park Rapids MN 56470



website: www.AffinityRealEstate.com | email: info@affinityrealestate.com | office: 218-237-3333 | fax: 218-237-3377

Affinity
REAL ESTATE INC

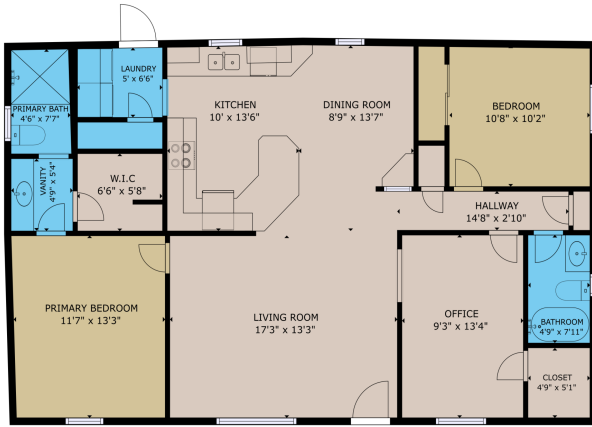
\$345,000
MLS 6704740 Lake Home
33684 Anderson Court
Crosslake MN 56442



website: www.AffinityRealEstate.com | email: info@affinityrealestate.com | office: 218-237-3333 | fax: 218-237-3377



\$345,000
 MLS 6704740 Lake Home
 33684 Anderson Court
 Crosslake MN 56442



OFFICE: OFFICIAL AREA
FLOOR: 11.00 sq. ft.
TOTAL: 11.00 sq. ft.

Matterport



website: www.AffinityRealEstate.com | email: info@affinityrealestate.com | office: 218-237-3333 | fax: 218-237-3377

Affinity
REAL ESTATE INC

\$345,000
MLS 6704740 Lake Home
33684 Anderson Court
Crosslake MN 56442



website: www.AffinityRealEstate.com | email: info@affinityrealestate.com | office: 218-237-3333 | fax: 218-237-3377



\$345,000
 MLS 6704740 Lake Home
 33684 Anderson Court
 Crosslake MN 56442



website: www.AffinityRealEstate.com | email: info@affinityrealestate.com | office: 218-237-3333 | fax: 218-237-3377



\$345,000
MLS 6704740 Lake Home
33684 Anderson Court
Crosslake MN 56442



website: www.AffinityRealEstate.com | email: info@affinityrealestate.com | office: 218-237-3333 | fax: 218-237-3377

Affinity
REAL ESTATE INC

\$345,000
MLS 6704740 Lake Home
33684 Anderson Court
Crosslake MN 56442