



MLS 6704754 Land

\$69,900

14.99 Acres
Raw Land

6395 29th Avenue
Pine River MN 56474

Status: Active

Description:

Incredibly unique 15-acre opportunity in the country, zoned commercially or use it for your homestead. A rare opportunity to own a versatile property just west of Pequot & Pine River. This parcel offers a mix of open field right on high-traffic County Road 1 stretching between Pillager & Pine River with approximately 5.5 acres of high-and-dry, buildable land—perfect for a variety of residential or commercial uses. Formerly home to the Maple Leaf convenience store, the property includes a year-round artesian well and convenient access directly off County Road 1.

Additional Details:

Lot Acres	14.99
Lot Dimensions	494x1320
School District	2174
Taxes	\$130
Taxes with Assessments	\$130
Tax Year	2025

Additional Features:

Driving Directions:

Take County road 1 to the property. Head East on 64th St SW.



Listed By:
Real Broker, LLC

Affinity Real Estate Inc. participates in the Regional Multiple Listing Service of Minnesota, Inc Broker Reciprocity (sm) program, allowing us to display other broker's listings on our website. All properties are subject to prior sale, change or withdrawal.



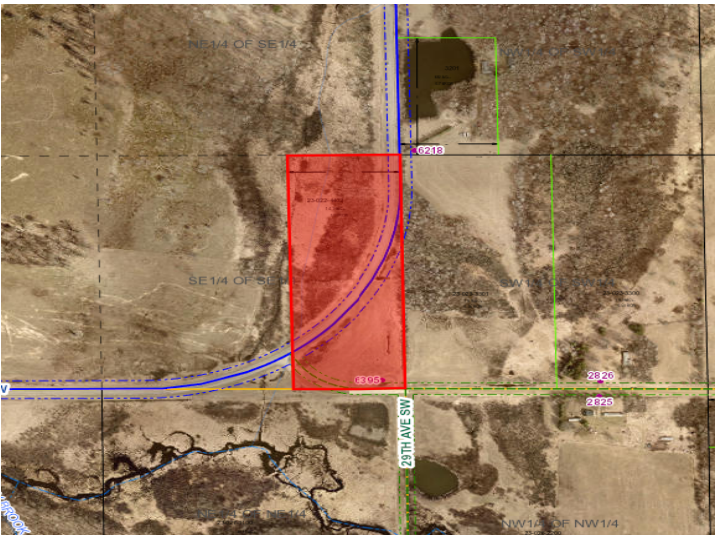
Call Affinity Real Estate

218-237-3333

info@affinityrealestate.com



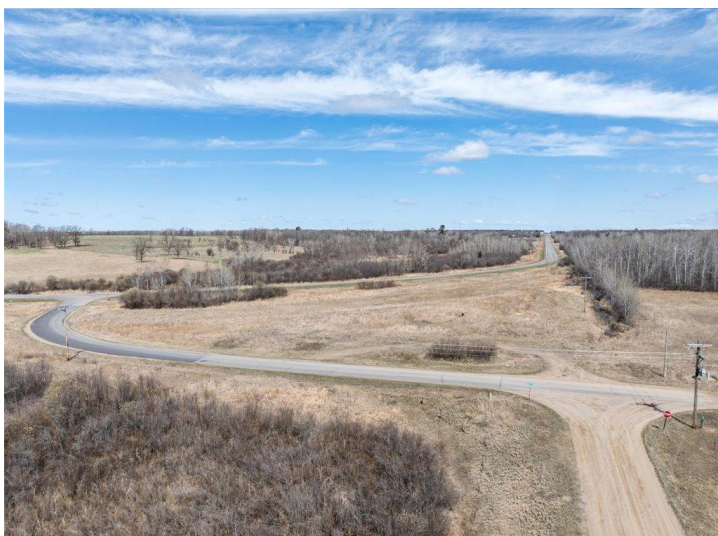
Affinity Real Estate - 600 Park Avenue South - Park Rapids MN 56470



website: www.AffinityRealEstate.com | email: info@affinityrealestate.com | office: 218-237-3333 | fax: 218-237-3377



\$69,900
 MLS 6704754 Land
 6395 29th Avenue
 Pine River MN 56474



website: www.AffinityRealEstate.com | email: info@affinityrealestate.com | office: 218-237-3333 | fax: 218-237-3377



\$69,900
 MLS 6704754 Land
 6395 29th Avenue
 Pine River MN 56474



website: www.AffinityRealEstate.com | email: info@affinityrealestate.com | office: 218-237-3333 | fax: 218-237-3377



\$69,900
MLS 6704754 Land
6395 29th Avenue
Pine River MN 56474



website: www.AffinityRealEstate.com | email: info@affinityrealestate.com | office: 218-237-3333 | fax: 218-237-3377



\$69,900
MLS 6704754 Land
6395 29th Avenue
Pine River MN 56474