

MLS 6705370 Land

\$59,900

4.27 Acres
Finished Lot(s)

Tract F County Road 11
Crosby MN 56441

Status: Pending

Description:

Don't build until you seen this hard to find 4.27 wooded lot in the heart of the lakes area. The lot does have a Crosby address, but is just a few miles from Crosslake.

Additional Details:

Lot Acres	4.27
Lot Dimensions	401x405x401x405
School District	182
Taxes	(unreported)
Taxes with Assessments	(unreported)
Tax Year	2024

Additional Features:

Driving Directions:

Take County Road 3, turn on Cty Road 11, to lot on Right.



Listed By:
eXp Realty

Affinity Real Estate Inc. participates in the Regional Multiple Listing Service of Minnesota, Inc Broker Reciprocity (sm) program, allowing us to display other broker's listings on our website. All properties are subject to prior sale, change or withdrawal.



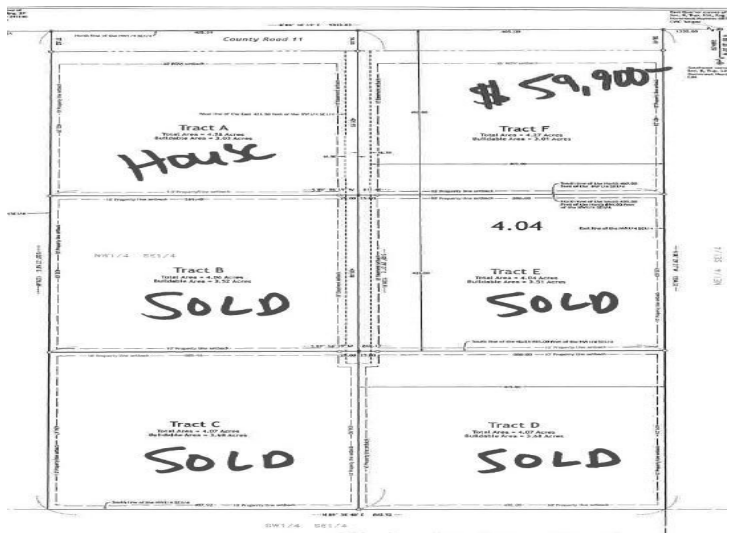
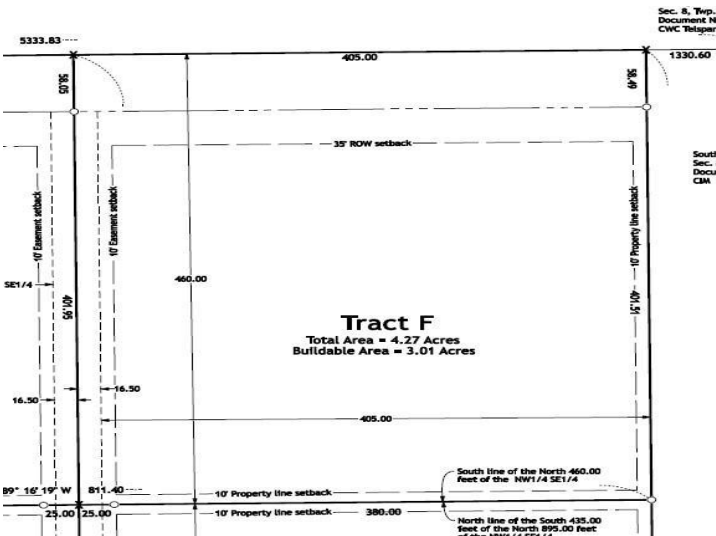
Call Affinity Real Estate

218-237-3333

info@affinityrealestate.com



Affinity Real Estate - 600 Park Avenue South - Park Rapids MN 56470



website: www.AffinityRealEstate.com | email: info@affinityrealestate.com | office: 218-237-3333 | fax: 218-237-3377

Affinity
REAL ESTATE INC

\$59,900
MLS 6705370 Land
Tract F County Road 11
Crosby MN 56441



website: www.AffinityRealEstate.com | email: info@affinityrealestate.com | office: 218-237-3333 | fax: 218-237-3377



\$59,900

MLS 6705370 Land
Tract F County Road 11
Crosby MN 56441