



MLS 6705398 Lake Home

**\$625,000**

2,743 sq ft  
4 bedrooms  
3 baths

34652 Moose Trail  
Park Rapids MN 56470

Waterfront: Beauty Lake (Lake  
Alice Twp.)

Status: Active

#### Description:

This beautiful log home on Beauty Lake, just north of Park Rapids, is the perfect Up North getaway. Thoughtfully crafted with quality throughout, it features 4 bedrooms and 3 bathrooms. The main level offers an updated kitchen, cozy living room with stone fireplace, one bedroom, a full bath, and access to a full-length covered lakeside deck with peaceful views. Upstairs you'll find two more bedrooms, a bathroom, and a relaxing sitting area. The walk-out lower level includes another bedroom, bathroom, utility room, and a spacious family room that opens to a gently sloping yard down to the lake. Set on 3.1 acres, this property offers privacy and space to enjoy the outdoors. Beauty Lake is a 55-acre clear water lake with a max depth of 53 feet—ideal for fishing and quiet days on the water. A finished, heated 24x36 garage provides excellent storage. Located just 2.7 miles from Itasca State Park, this home is true Northwoods living.

#### Additional Details:

Year Built	2006
Lot Acres	3.1
Lot Dimensions	210x358x334x220x279
Garage Stalls	2
School District	309
Taxes	\$3,331
Taxes with Assessments	\$3,552
Tax Year	2025

#### Additional Features:

**Basement:** Block, Finished, Walkout **Fuel:** Electric, Propane **Garage:** 2 **Heat:** Forced Air, Radiant Floor **Sewer:** Private Sewer, Tank with Drainage Field **Water:** Drilled, Private, Well **Air Conditioning:** Central Air

#### Driving Directions:

From 34/71 intersection head north for 21 miles, turn right on Moose Dr, continue for 1.6 miles, turn right on Moose Trail, property is on the left.



Listed By:  
Keller Williams Realty Professionals

Affinity Real Estate Inc. participates in the Regional Multiple Listing Service of Minnesota, Inc Broker Reciprocity (sm) program, allowing us to display other broker's listings on our website. All properties are subject to prior sale, change or withdrawal.



Call Affinity Real Estate

**218-237-3333**

[info@affinityrealestate.com](mailto:info@affinityrealestate.com)



Affinity Real Estate - 600 Park Avenue South - Park Rapids MN 56470





website: [www.AffinityRealEstate.com](http://www.AffinityRealEstate.com) | email: [info@affinityrealestate.com](mailto:info@affinityrealestate.com) | office: 218-237-3333 | fax: 218-237-3377



**\$625,000**  
 MLS 6705398 Lake Home  
 34652 Moose Trail  
 Park Rapids MN 56470





website: [www.AffinityRealEstate.com](http://www.AffinityRealEstate.com) | email: [info@affinityrealestate.com](mailto:info@affinityrealestate.com) | office: 218-237-3333 | fax: 218-237-3377



**\$625,000**  
 MLS 6705398 Lake Home  
 34652 Moose Trail  
 Park Rapids MN 56470





website: [www.AffinityRealEstate.com](http://www.AffinityRealEstate.com) | email: [info@affinityrealestate.com](mailto:info@affinityrealestate.com) | office: 218-237-3333 | fax: 218-237-3377

**Affinity**  
REAL ESTATE INC

**\$625,000**  
MLS 6705398 Lake Home  
34652 Moose Trail  
Park Rapids MN 56470



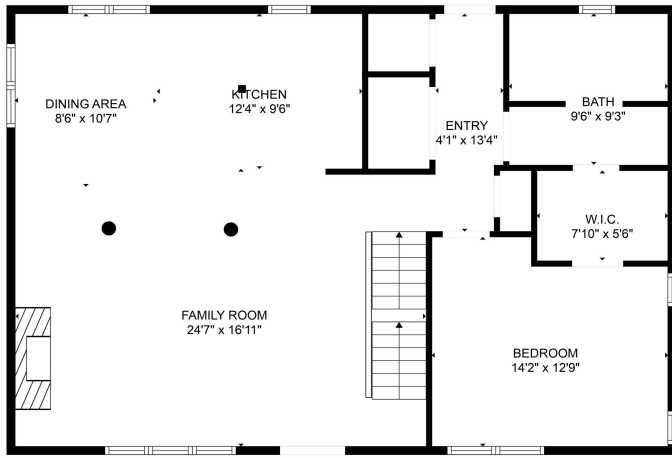


website: [www.AffinityRealEstate.com](http://www.AffinityRealEstate.com) | email: [info@affinityrealestate.com](mailto:info@affinityrealestate.com) | office: 218-237-3333 | fax: 218-237-3377

**Affinity**  
REAL ESTATE INC

**\$625,000**  
MLS 6705398 Lake Home  
34652 Moose Trail  
Park Rapids MN 56470





FLOOR PLAN CREATED BY CUBICASA API. MEASUREMENTS DEEMED HIGHLY RELIABLE BUT NOT GUARANTEED.

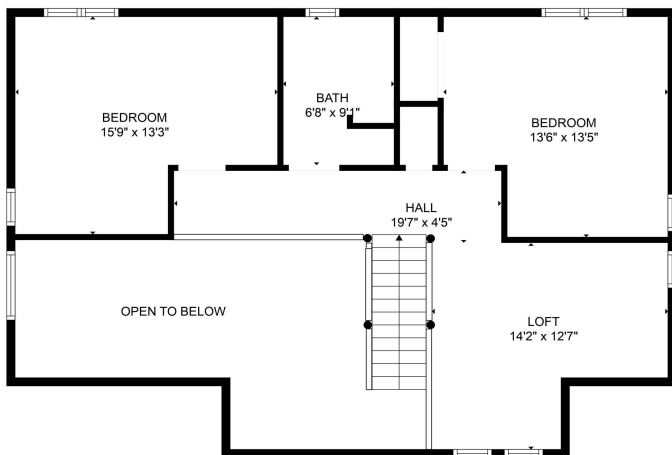


website: [www.AffinityRealEstate.com](http://www.AffinityRealEstate.com) | email: [info@affinityrealestate.com](mailto:info@affinityrealestate.com) | office: 218-237-3333 | fax: 218-237-3377

**Affinity**  
REAL ESTATE INC

**\$625,000**  
MLS 6705398 Lake Home  
34652 Moose Trail  
Park Rapids MN 56470





website: [www.AffinityRealEstate.com](http://www.AffinityRealEstate.com) | email: [info@affinityrealestate.com](mailto:info@affinityrealestate.com) | office: 218-237-3333 | fax: 218-237-3377

**Affinity**  
REAL ESTATE INC

**\$625,000**  
MLS 6705398 Lake Home  
34652 Moose Trail  
Park Rapids MN 56470



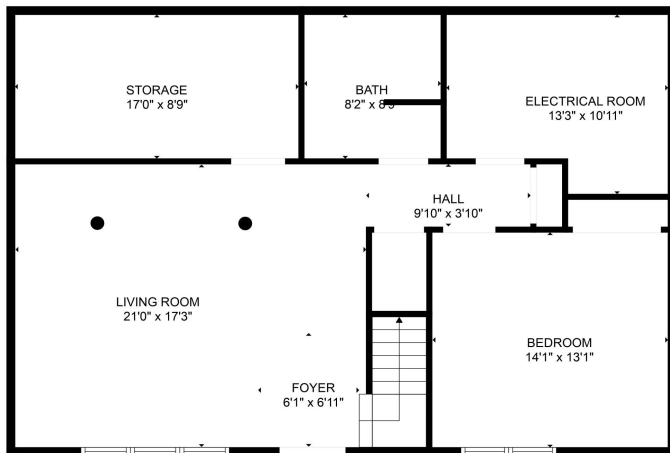


website: [www.AffinityRealEstate.com](http://www.AffinityRealEstate.com) | email: [info@affinityrealestate.com](mailto:info@affinityrealestate.com) | office: 218-237-3333 | fax: 218-237-3377

**Affinity**  
REAL ESTATE INC

**\$625,000**  
MLS 6705398 Lake Home  
34652 Moose Trail  
Park Rapids MN 56470





website: [www.AffinityRealEstate.com](http://www.AffinityRealEstate.com) | email: [info@affinityrealestate.com](mailto:info@affinityrealestate.com) | office: 218-237-3333 | fax: 218-237-3377

**Affinity**  
REAL ESTATE INC

**\$625,000**  
MLS 6705398 Lake Home  
34652 Moose Trail  
Park Rapids MN 56470





website: [www.AffinityRealEstate.com](http://www.AffinityRealEstate.com) | email: [info@affinityrealestate.com](mailto:info@affinityrealestate.com) | office: 218-237-3333 | fax: 218-237-3377

**Affinity**  
REAL ESTATE INC

**\$625,000**  
MLS 6705398 Lake Home  
34652 Moose Trail  
Park Rapids MN 56470





website: [www.AffinityRealEstate.com](http://www.AffinityRealEstate.com) | email: [info@affinityrealestate.com](mailto:info@affinityrealestate.com) | office: 218-237-3333 | fax: 218-237-3377

**Affinity**  
REAL ESTATE INC

**\$625,000**  
MLS 6705398 Lake Home  
34652 Moose Trail  
Park Rapids MN 56470





website: [www.AffinityRealEstate.com](http://www.AffinityRealEstate.com) | email: [info@affinityrealestate.com](mailto:info@affinityrealestate.com) | office: 218-237-3333 | fax: 218-237-3377



**\$625,000**  
 MLS 6705398 Lake Home  
 34652 Moose Trail  
 Park Rapids MN 56470