



MLS 6705432 Lake Home

**\$250,000**

952 sq ft  
2 bedrooms  
1 baths

13492 Edgewood Lane  
Mentor MN 56736

Waterfront: Maple

Status: Active

#### Description:

Discover the perfect blend of comfort and convenience with this delightful 2-bedroom, 1-bathroom home nestled on 1.5 acres right next to the serene Maple Lake. Whether you're seeking a year-round residence or a cozy weekend getaway, this property has something for everyone. Enjoy the benefits of association access to a beautiful beach, and take advantage of the opportunity to rent a boat slip to make the most of your lifestyle. The spacious lot offers a get away and room to enjoy outdoor activities. This charming home combines access to Maple Lake with the potential for year-round enjoyment. Don't miss your chance to own a slice of tranquility!

#### Additional Details:

Year Built	2012
Lot Acres	1.59
Lot Dimensions	154x444x150x481
Garage Stalls	2
School District	599
Taxes	\$2,470
Taxes with Assessments	\$2,470
Tax Year	2025

#### Additional Features:

**Basement:** None **Fuel:** Electric **Garage:** 2 **Heat:** Baseboard, Ductless Mini-Split **Sewer:** Mound Septic **Water:** Well **Air Conditioning:** Ductless Mini-Split

#### Driving Directions:

County 12 N to Sykes LN SE to Edgewood LN SE to home on right



Listed By:  
Edina Realty, Inc.

Affinity Real Estate Inc. participates in the Regional Multiple Listing Service of Minnesota, Inc Broker Reciprocity (sm) program, allowing us to display other broker's listings on our website. All properties are subject to prior sale, change or withdrawal.



Call Affinity Real Estate

**218-237-3333**

[info@affinityrealestate.com](mailto:info@affinityrealestate.com)



Affinity Real Estate - 600 Park Avenue South - Park Rapids MN 56470



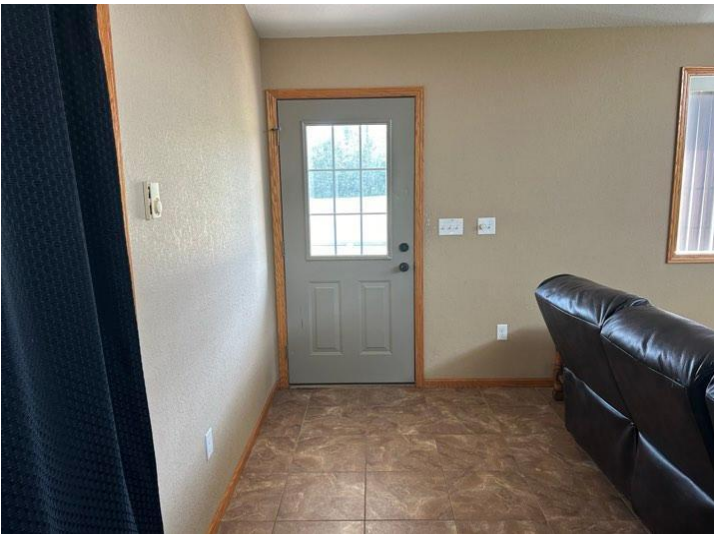


website: [www.AffinityRealEstate.com](http://www.AffinityRealEstate.com) | email: [info@affinityrealestate.com](mailto:info@affinityrealestate.com) | office: 218-237-3333 | fax: 218-237-3377

**Affinity**  
REAL ESTATE INC

**\$250,000**  
MLS 6705432 Lake Home  
13492 Edgewood Lane  
Mentor MN 56736





website: [www.AffinityRealEstate.com](http://www.AffinityRealEstate.com) | email: [info@affinityrealestate.com](mailto:info@affinityrealestate.com) | office: 218-237-3333 | fax: 218-237-3377

**Affinity**  
REAL ESTATE INC

**\$250,000**  
MLS 6705432 Lake Home  
13492 Edgewood Lane  
Mentor MN 56736





website: [www.AffinityRealEstate.com](http://www.AffinityRealEstate.com) | email: [info@affinityrealestate.com](mailto:info@affinityrealestate.com) | office: 218-237-3333 | fax: 218-237-3377



**\$250,000**  
MLS 6705432 Lake Home  
13492 Edgewood Lane  
Mentor MN 56736