



MLS 6705455 Commercial

**\$699,000**

16609 371 Highway  
Brainerd MN 56401

Status: Active

**Description:**

(description unavailable)

**Additional Details:**

Year Built	2000
Lot Dimensions	286x470x203x662
Garage Stalls	6
School District	181
Taxes	\$6,596
Taxes with Assessments	\$6,596
Tax Year	2024

**Additional Features:**

**Fuel:** Natural Gas **Garage:** 6 **Heat:** Forced Air **Sewer:** Private Sewer **Water:** Well

**Driving Directions:**

West side of hwy 371 near Schroeder's appliance center.



Listed By:  
Parcel Real Estate Inc.

Affinity Real Estate Inc. participates in the Regional Multiple Listing Service of Minnesota, Inc Broker Reciprocity (sm) program, allowing us to display other broker's listings on our website. All properties are subject to prior sale, change or withdrawal.



**Call Affinity Real Estate**

**218-237-3333**

**info@affinityrealestate.com**

MLS



**Affinity Real Estate - 600 Park Avenue South - Park Rapids MN 56470**





website: [www.AffinityRealEstate.com](http://www.AffinityRealEstate.com) | email: [info@affinityrealestate.com](mailto:info@affinityrealestate.com) | office: 218-237-3333 | fax: 218-237-3377



**\$699,000**  
 MLS 6705455 Commercial  
 16609 371 Highway  
 Brainerd MN 56401



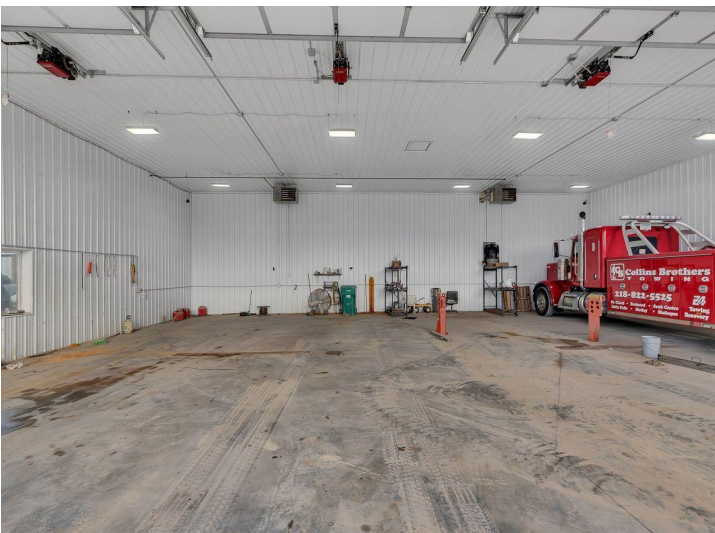


website: [www.AffinityRealEstate.com](http://www.AffinityRealEstate.com) | email: [info@affinityrealestate.com](mailto:info@affinityrealestate.com) | office: 218-237-3333 | fax: 218-237-3377



**\$699,000**  
 MLS 6705455 Commercial  
 16609 371 Highway  
 Brainerd MN 56401





website: [www.AffinityRealEstate.com](http://www.AffinityRealEstate.com) | email: [info@affinityrealestate.com](mailto:info@affinityrealestate.com) | office: 218-237-3333 | fax: 218-237-3377



**\$699,000**  
 MLS 6705455 Commercial  
 16609 371 Highway  
 Brainerd MN 56401