



MLS 6705481 Lake Home

\$699,900

3,100 sq ft
2 bedrooms
3 baths

17999 Ivy Drive
Park Rapids MN 56470

Waterfront: Pickerel

Status: Active

Description:

Lakeview Hide-A-Way – Your Private Lakeside Retreat Awaits! Tucked away on a quiet private drive, this stunning Pickerel Lake home offers the perfect blend of comfort, privacy, and lakefront charm. Surrounded by mature pine trees and set on 150 feet of pristine south-facing sand shoreline, this fully finished retreat is your gateway to unforgettable summer memories. Inside, you'll find an open-concept layout designed for easy living and gorgeous lake views. The spacious kitchen features a corner sink with bright windows, a large center island, double wall ovens, and a sleek cooktop—perfect for the home chef. The dining and living areas open to the wraparound deck, complete with remote-controlled awning for sunny afternoons. Cozy up by the Wilkening stone fireplace or simply relax and take in the scenery. The main level also boasts a generous primary suite with French doors, a luxurious 3/4 bath including a soaking tub, and a walk-in closet. A convenient half bath and laundry room are also located on this level for everyday ease. Downstairs, the fully finished lower level includes a large family room with walk-out patio, an additional bedroom, 3/4 bath, and ample storage space. With in-floor heating, a heat pump, and Steffes furnace, every inch of this home is built for comfort. Need extra space for guests? The charming two-bedroom bunkhouse offers a spacious great room and direct access to the deck—ideal for hosting family and friends. While it doesn't include plumbing, it's the perfect overflow space. A large 40x45 detached storage building with lean-to provides room for all your gear, alongside a shed/dog kennel and woodshed. Included in the sale are a dock, kayaks, paddle boards, paddle boat, and a 12' fishing boat with motor—everything you need for lake life! Don't miss your chance to own this slice of lakeside paradise. Book your private showing today and start your summer at Lakeview Hide-A-Way!

Additional Details:

Year Built	2005
Lot Acres	1.4
Lot Dimensions	150 x 478 x 133 x 397
Garage Stalls	4
School District	309
Taxes	\$2,541
Taxes with Assessments	\$2,762
Tax Year	2025



Listed By:
Affinity Real Estate Inc.

Affinity Real Estate Inc. participates in the Regional Multiple Listing Service of Minnesota, Inc Broker Reciprocity (sm) program, allowing us to display other broker's listings on our website. All properties are subject to prior sale, change of ownership.



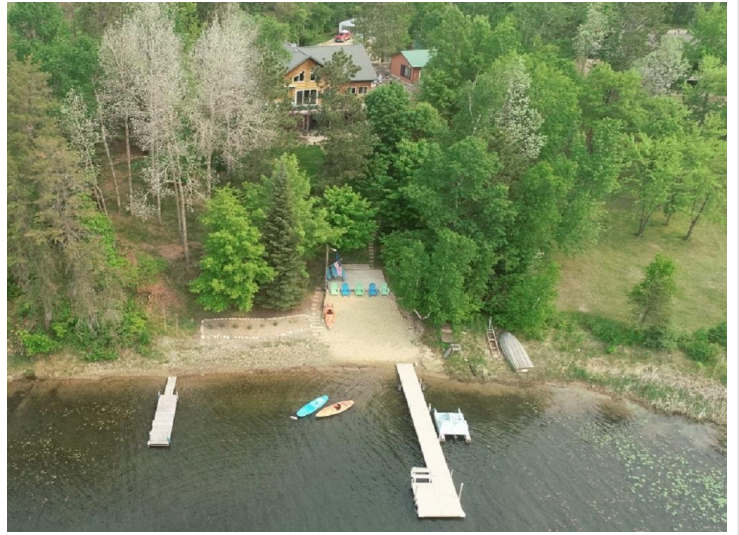
Call Affinity Real Estate

218-237-3333

info@affinityrealestate.com

MLS REALTOR® EQUAL OPPORTUNITY . Continue 1 miles, turn left to proceed 1 mile to Ivy Drive and turn R. Property is in .5 mile on right hand side.

Affinity Real Estate - 600 Park Avenue South - Park Rapids MN 56470



website: www.AffinityRealEstate.com | email: info@affinityrealestate.com | office: 218-237-3333 | fax: 218-237-3377

Affinity
REAL ESTATE INC

\$699,900
MLS 6705481 Lake Home
17999 Ivy Drive
Park Rapids MN 56470



website: www.AffinityRealEstate.com | email: info@affinityrealestate.com | office: 218-237-3333 | fax: 218-237-3377

Affinity
REAL ESTATE INC

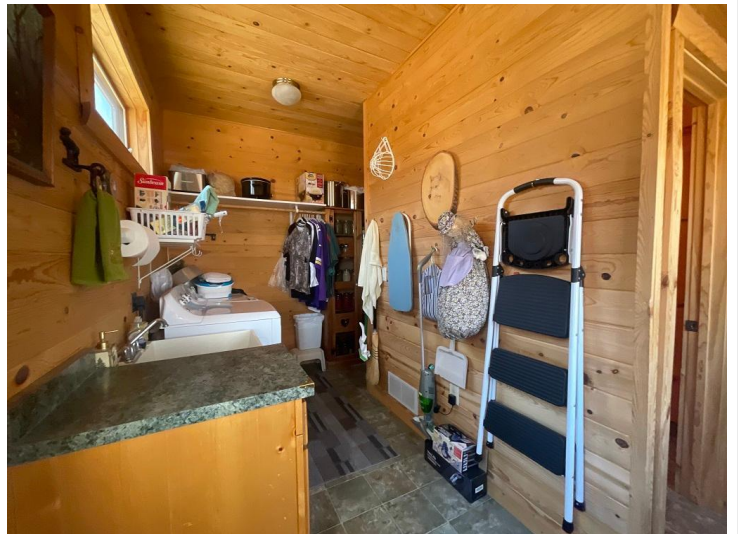
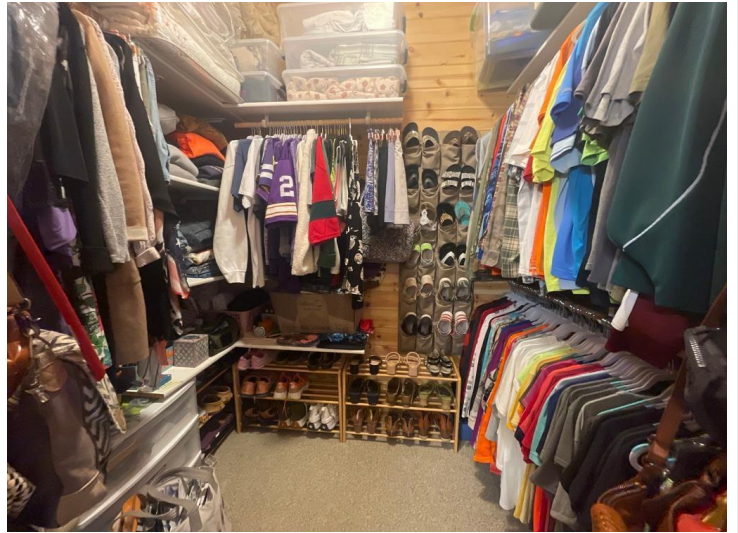
\$699,900
MLS 6705481 Lake Home
17999 Ivy Drive
Park Rapids MN 56470



website: www.AffinityRealEstate.com | email: info@affinityrealestate.com | office: 218-237-3333 | fax: 218-237-3377

Affinity
REAL ESTATE INC

\$699,900
MLS 6705481 Lake Home
17999 Ivy Drive
Park Rapids MN 56470



website: www.AffinityRealEstate.com | email: info@affinityrealestate.com | office: 218-237-3333 | fax: 218-237-3377

Affinity
REAL ESTATE INC

\$699,900
MLS 6705481 Lake Home
17999 Ivy Drive
Park Rapids MN 56470



website: www.AffinityRealEstate.com | email: info@affinityrealestate.com | office: 218-237-3333 | fax: 218-237-3377

Affinity
REAL ESTATE INC

\$699,900
MLS 6705481 Lake Home
17999 Ivy Drive
Park Rapids MN 56470



website: www.AffinityRealEstate.com | email: info@affinityrealestate.com | office: 218-237-3333 | fax: 218-237-3377

Affinity
REAL ESTATE INC

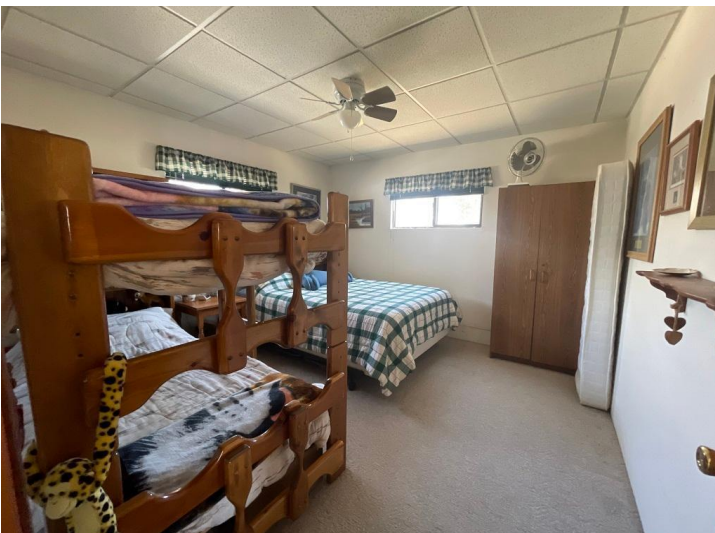
\$699,900
MLS 6705481 Lake Home
17999 Ivy Drive
Park Rapids MN 56470



website: www.AffinityRealEstate.com | email: info@affinityrealestate.com | office: 218-237-3333 | fax: 218-237-3377

Affinity
REAL ESTATE INC

\$699,900
MLS 6705481 Lake Home
17999 Ivy Drive
Park Rapids MN 56470



website: www.AffinityRealEstate.com | email: info@affinityrealestate.com | office: 218-237-3333 | fax: 218-237-3377

Affinity
REAL ESTATE INC

\$699,900
MLS 6705481 Lake Home
17999 Ivy Drive
Park Rapids MN 56470



website: www.AffinityRealEstate.com | email: info@affinityrealestate.com | office: 218-237-3333 | fax: 218-237-3377

Affinity
REAL ESTATE INC

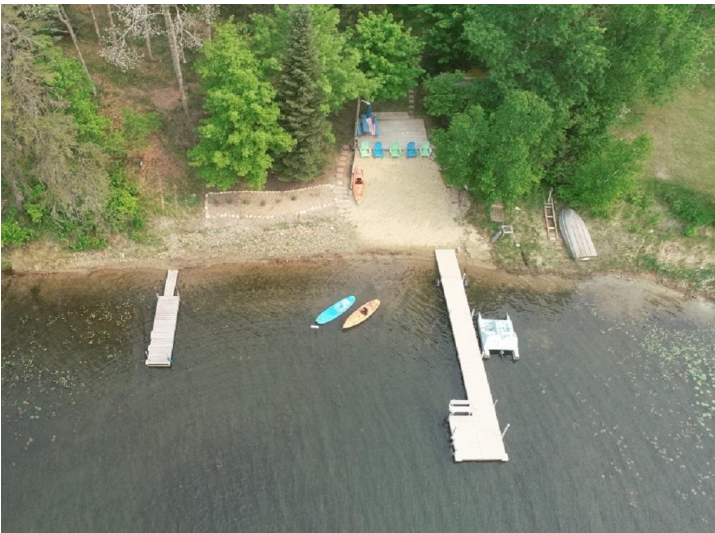
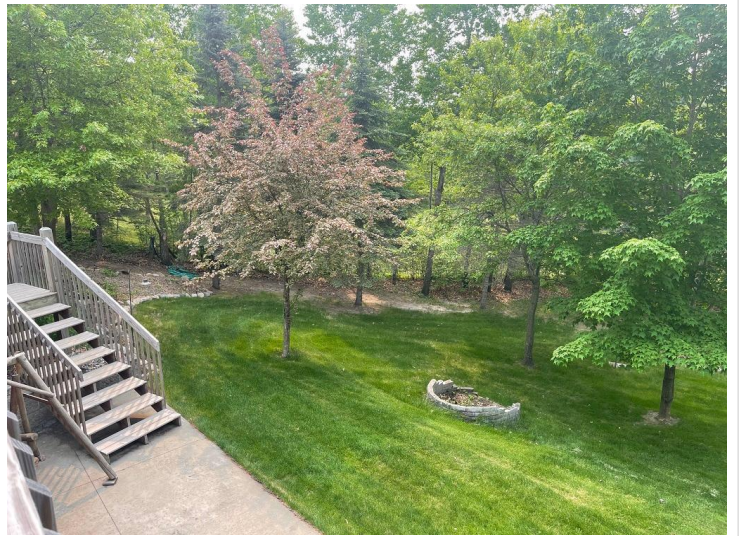
\$699,900
MLS 6705481 Lake Home
17999 Ivy Drive
Park Rapids MN 56470



website: www.AffinityRealEstate.com | email: info@affinityrealestate.com | office: 218-237-3333 | fax: 218-237-3377

Affinity
REAL ESTATE INC

\$699,900
MLS 6705481 Lake Home
17999 Ivy Drive
Park Rapids MN 56470



website: www.AffinityRealEstate.com | email: info@affinityrealestate.com | office: 218-237-3333 | fax: 218-237-3377

Affinity
REAL ESTATE INC

\$699,900
MLS 6705481 Lake Home
17999 Ivy Drive
Park Rapids MN 56470



website: www.AffinityRealEstate.com | email: info@affinityrealestate.com | office: 218-237-3333 | fax: 218-237-3377

Affinity
REAL ESTATE INC

\$699,900
MLS 6705481 Lake Home
17999 Ivy Drive
Park Rapids MN 56470