



MLS 6705491 Land

\$42,000

0.6 Acres
Raw Land

315 County Hwy 11
Audubon MN 56511

Status: Closed

Description:

This .60-acre corner lot with County Hwy 11 frontage offers convenient access to Hwy 10, making it an ideal location. City sewer and water available.

Additional Details:

Lot Acres	0.6
Lot Dimensions	Irr
School District	1299
Taxes	\$336
Taxes with Assessments	\$2,284
Tax Year	2025

Additional Features:

Driving Directions:

From Hwy 10 head South on Co Hwy 11, East side corner lot. Hwy 11 and Partridge Street



Listed By:
Re/Max Lakes Region

Affinity Real Estate Inc. participates in the Regional Multiple Listing Service of Minnesota, Inc Broker Reciprocity (sm) program, allowing us to display other broker's listings on our website. All properties are subject to prior sale, change or withdrawal.



Call Affinity Real Estate

218-237-3333

info@affinityrealestate.com



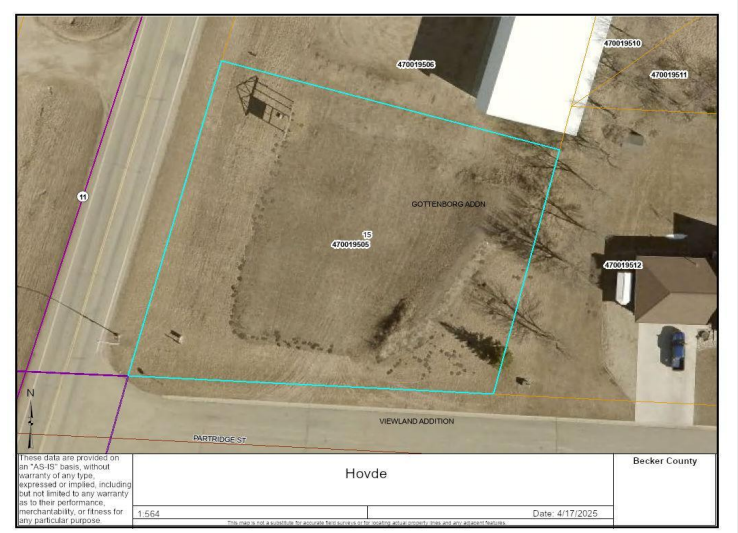
Affinity Real Estate - 600 Park Avenue South - Park Rapids MN 56470



website: www.AffinityRealEstate.com | email: info@affinityrealestate.com | office: 218-237-3333 | fax: 218-237-3377



\$42,000
 MLS 6705491 Land
 315 County Hwy 11
 Audubon MN 56511



website: www.AffinityRealEstate.com | email: info@affinityrealestate.com | office: 218-237-3333 | fax: 218-237-3377



\$42,000
 MLS 6705491 Land
 315 County Hwy 11
 Audubon MN 56511