

MLS 6706001 Land

\$74,900

1 Acres
Subdivided

19733 Audubon Lake Road
Audubon MN 56511

Status: Active

Description:

Beautiful wooded lake lot, with 161 ft of shoreline, must see. Mature trees. Country living at the edge of town with lake view.

Seller will accept Contract for Deed at 5% interest with 7% downpayment, balloon payment in 5 years

Additional Details:

Lot Acres	1
Lot Dimensions	270x160
School District	1299
Taxes	\$256
Taxes with Assessments	\$256
Tax Year	2025

Additional Features:

Driving Directions:

From Audubon on hwy #10, go south on #11 for approximately 1/4 mile then right on Audubon Lake Road



Listed By:
Jack Chivers Realty

Affinity Real Estate Inc. participates in the Regional Multiple Listing Service of Minnesota, Inc Broker Reciprocity (sm) program, allowing us to display other broker's listings on our website. All properties are subject to prior sale, change or withdrawal.



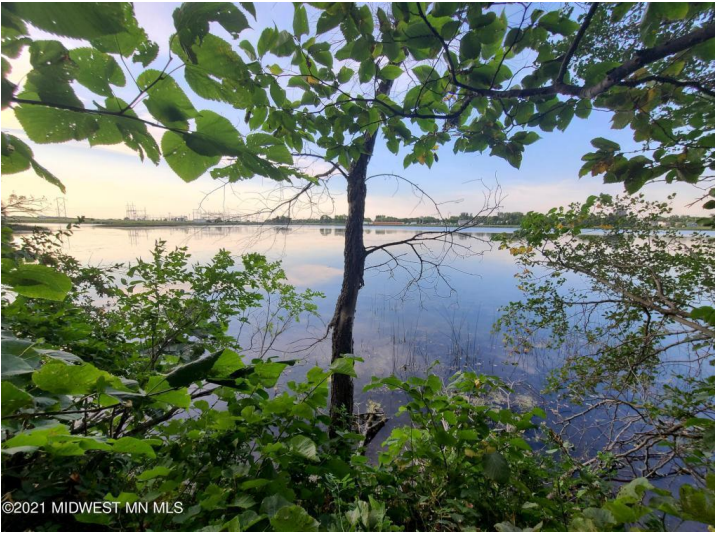
Call Affinity Real Estate

218-237-3333

info@affinityrealestate.com



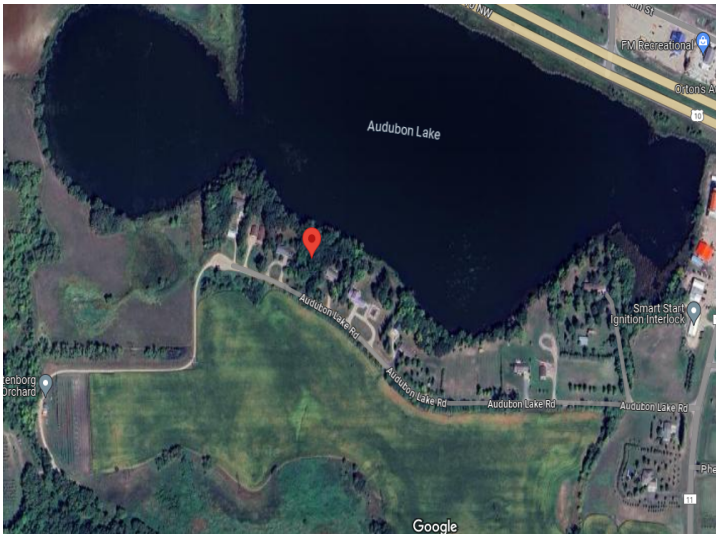
Affinity Real Estate - 600 Park Avenue South - Park Rapids MN 56470



website: www.AffinityRealEstate.com | email: info@affinityrealestate.com | office: 218-237-3333 | fax: 218-237-3377



\$74,900
 MLS 6706001 Land
 19733 Audubon Lake Road
 Audubon MN 56511



website: www.AffinityRealEstate.com | email: info@affinityrealestate.com | office: 218-237-3333 | fax: 218-237-3377



\$74,900
MLS 6706001 Land
19733 Audubon Lake Road
Audubon MN 56511