



MLS 6706032 Residential

**\$329,000**

2,808 sq ft  
4 bedrooms  
3 baths

51099 Wind Flower Drive  
Bemidji MN 56601

Status: Pending

#### Description:

Two lovely homes for the price of one! Are you seeking a home with another separate living space? Bonus, there is a 1 bedroom, 1 bath, handicapped accessible home. which comes furnished, with a cozy fireplace, a separate deck and is completely ready to move in. The main home has 3 bedrooms, 1 full bath and one-half bath with gorgeous solid Brazilian cherry wood flooring and a solid cherry custom-made ceiling trellis in the kitchen. The kitchen has a stunning copper sink and granite countertop with ogee edges, one of the more expensive edge styles available. Inside the home you will find custom Scandinavian decorations handmade by a European Woodcarver, a one-of-a-kind feature. The lower level is ready for your personal finishing touches with egress windows. The landscaping is a dream come true with Hostas, lilies, rock garden and raised bed flower garden. Both homes decks lead to the beautiful patio. The seller has enjoyed the upgrade patio pavers because of their durability versatility and ease of maintenance. The built-in brick fireplace on the edge of the patio is perfect on those evenings when you want to relax in front of an outside fire. The 4 sheds give you plenty of outside storage. The home is surrounded by full grown adult trees with nice privacy. Each home has their own garage, a double and a single. Come see in person this spectacular property.

#### Additional Details:

Year Built	1989
Lot Acres	2.04
Lot Dimensions	282x314
Garage Stalls	2
School District	31
Taxes	\$1,824
Taxes with Assessments	\$1,824
Tax Year	2025

#### Additional Features:

**Basement:** Block, Egress Window(s), Full **Fuel:** Propane **Garage:** 2 **Heat:** Forced Air **Sewer:** Private Sewer **Water:** Private, Well **Air Conditioning:** Wall Unit(s)

#### Driving Directions:

From Bemidji take US Hwy 2 East to Wind Flower Dr. Left on Wind Flower Dr. Home is on the right.



Listed By:  
Better Homes and Gardens Real Estate First Choice

Affinity Real Estate Inc. participates in the Regional Multiple Listing Service of Minnesota, Inc Broker Reciprocity (sm) program, allowing us to display other broker's listings on our website. All properties are subject to prior sale, change or withdrawal.



Call Affinity Real Estate

**218-237-3333**

[info@affinityrealestate.com](mailto:info@affinityrealestate.com)



Affinity Real Estate - 600 Park Avenue South - Park Rapids MN 56470





website: [www.AffinityRealEstate.com](http://www.AffinityRealEstate.com) | email: [info@affinityrealestate.com](mailto:info@affinityrealestate.com) | office: 218-237-3333 | fax: 218-237-3377

**Affinity**  
REAL ESTATE INC

**\$329,000**  
MLS 6706032 Residential  
51099 Wind Flower Drive  
Bemidji MN 56601





website: [www.AffinityRealEstate.com](http://www.AffinityRealEstate.com) | email: [info@affinityrealestate.com](mailto:info@affinityrealestate.com) | office: 218-237-3333 | fax: 218-237-3377

**Affinity**  
REAL ESTATE INC

**\$329,000**  
MLS 6706032 Residential  
51099 Wind Flower Drive  
Bemidji MN 56601





website: [www.AffinityRealEstate.com](http://www.AffinityRealEstate.com) | email: [info@affinityrealestate.com](mailto:info@affinityrealestate.com) | office: 218-237-3333 | fax: 218-237-3377

**Affinity**  
REAL ESTATE INC

**\$329,000**  
MLS 6706032 Residential  
51099 Wind Flower Drive  
Bemidji MN 56601





website: [www.AffinityRealEstate.com](http://www.AffinityRealEstate.com) | email: [info@affinityrealestate.com](mailto:info@affinityrealestate.com) | office: 218-237-3333 | fax: 218-237-3377

**Affinity**  
REAL ESTATE INC

**\$329,000**  
MLS 6706032 Residential  
51099 Wind Flower Drive  
Bemidji MN 56601





website: [www.AffinityRealEstate.com](http://www.AffinityRealEstate.com) | email: [info@affinityrealestate.com](mailto:info@affinityrealestate.com) | office: 218-237-3333 | fax: 218-237-3377

**Affinity**  
REAL ESTATE INC

**\$329,000**  
MLS 6706032 Residential  
51099 Wind Flower Drive  
Bemidji MN 56601





website: [www.AffinityRealEstate.com](http://www.AffinityRealEstate.com) | email: [info@affinityrealestate.com](mailto:info@affinityrealestate.com) | office: 218-237-3333 | fax: 218-237-3377

**Affinity**  
REAL ESTATE INC

**\$329,000**

MLS 6706032 Residential  
51099 Wind Flower Drive  
Bemidji MN 56601



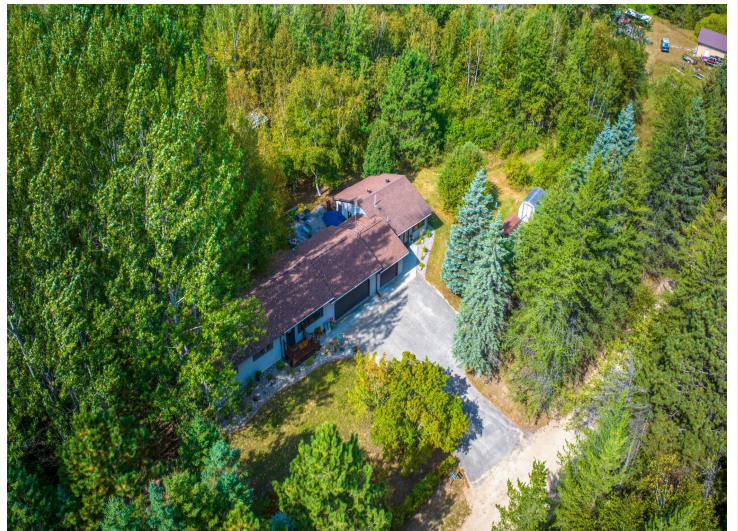
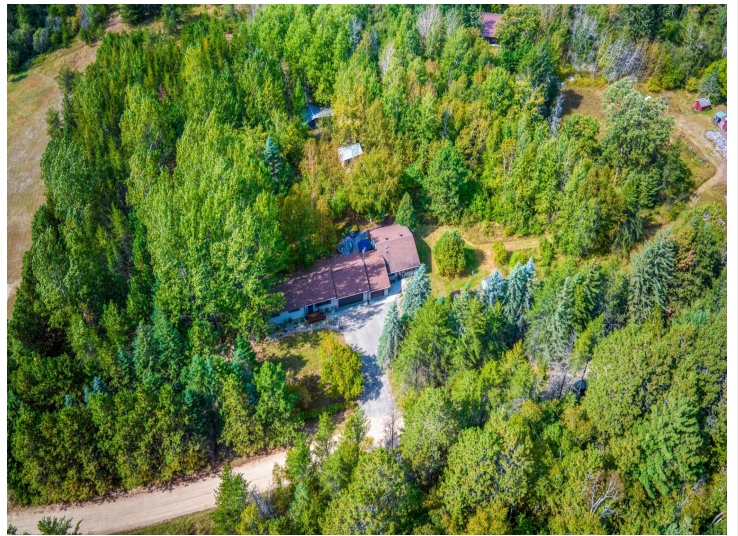


website: [www.AffinityRealEstate.com](http://www.AffinityRealEstate.com) | email: [info@affinityrealestate.com](mailto:info@affinityrealestate.com) | office: 218-237-3333 | fax: 218-237-3377

**Affinity**  
REAL ESTATE INC

**\$329,000**  
MLS 6706032 Residential  
51099 Wind Flower Drive  
Bemidji MN 56601





website: [www.AffinityRealEstate.com](http://www.AffinityRealEstate.com) | email: [info@affinityrealestate.com](mailto:info@affinityrealestate.com) | office: 218-237-3333 | fax: 218-237-3377



**\$329,000**  
 MLS 6706032 Residential  
 51099 Wind Flower Drive  
 Bemidji MN 56601





website: [www.AffinityRealEstate.com](http://www.AffinityRealEstate.com) | email: [info@affinityrealestate.com](mailto:info@affinityrealestate.com) | office: 218-237-3333 | fax: 218-237-3377

**Affinity**  
REAL ESTATE INC

**\$329,000**

MLS 6706032 Residential  
51099 Wind Flower Drive  
Bemidji MN 56601





website: [www.AffinityRealEstate.com](http://www.AffinityRealEstate.com) | email: [info@affinityrealestate.com](mailto:info@affinityrealestate.com) | office: 218-237-3333 | fax: 218-237-3377



**\$329,000**  
 MLS 6706032 Residential  
 51099 Wind Flower Drive  
 Bemidji MN 56601





website: [www.AffinityRealEstate.com](http://www.AffinityRealEstate.com) | email: [info@affinityrealestate.com](mailto:info@affinityrealestate.com) | office: 218-237-3333 | fax: 218-237-3377

**Affinity**  
REAL ESTATE INC

**\$329,000**

MLS 6706032 Residential  
51099 Wind Flower Drive  
Bemidji MN 56601





website: [www.AffinityRealEstate.com](http://www.AffinityRealEstate.com) | email: [info@affinityrealestate.com](mailto:info@affinityrealestate.com) | office: 218-237-3333 | fax: 218-237-3377

**Affinity**  
REAL ESTATE INC

**\$329,000**

MLS 6706032 Residential  
51099 Wind Flower Drive  
Bemidji MN 56601





website: [www.AffinityRealEstate.com](http://www.AffinityRealEstate.com) | email: [info@affinityrealestate.com](mailto:info@affinityrealestate.com) | office: 218-237-3333 | fax: 218-237-3377

**Affinity**  
REAL ESTATE INC

**\$329,000**

MLS 6706032 Residential  
51099 Wind Flower Drive  
Bemidji MN 56601





website: [www.AffinityRealEstate.com](http://www.AffinityRealEstate.com) | email: [info@affinityrealestate.com](mailto:info@affinityrealestate.com) | office: 218-237-3333 | fax: 218-237-3377

**Affinity**  
REAL ESTATE INC

**\$329,000**

MLS 6706032 Residential  
51099 Wind Flower Drive  
Bemidji MN 56601





website: [www.AffinityRealEstate.com](http://www.AffinityRealEstate.com) | email: [info@affinityrealestate.com](mailto:info@affinityrealestate.com) | office: 218-237-3333 | fax:218-237-3377



**\$329,000**

MLS 6706032 Residential  
51099 Wind Flower Drive  
Bemidji MN 56601