

MLS 6706045 Lake Land

\$115,000

Description:

Privacy, privacy, privacy. What a perfect spot to park your camper and enjoy the woods. Nothing like listening to the loons while surrounded by 5 acres of woods with 123 ft of frontage on Long Lake. This 5 acre wooded lot on Long Lake is waiting for you to make it yours. Waterfront view to the North. There is space cleared for a camper and a storage unit on site. No utilities.

Additional Details:

Lot Acres	5
Lot Dimensions	123x267
School District	549
Taxes	\$636
Taxes with Assessments	\$636
Tax Year	2025

Additional Features:

Driving Directions:

County Hwy 1 to Sugar Maple Drive - go all the way to the end, there is a dirt road that leads to the land



Listed By:
REAL

Affinity Real Estate Inc. participates in the Regional Multiple Listing Service of Minnesota, Inc Broker Reciprocity (sm) program, allowing us to display other broker's listings on our website. All properties are subject to prior sale, change or withdrawal.



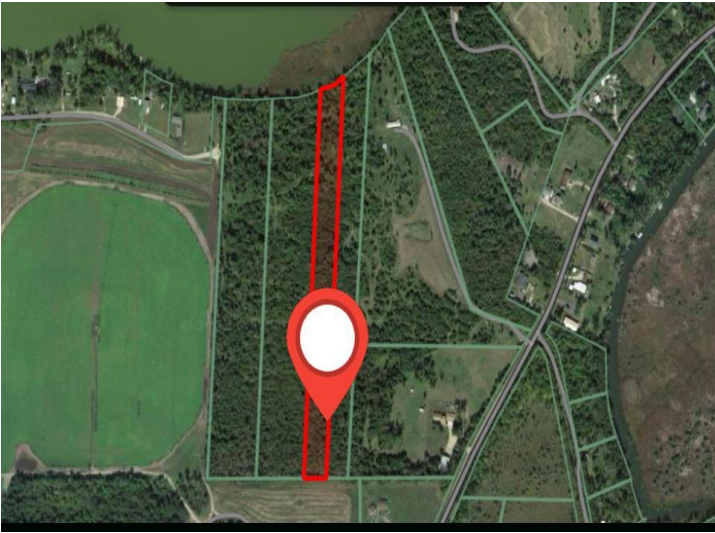
Call Affinity Real Estate

218-237-3333

info@affinityrealestate.com



Affinity Real Estate - 600 Park Avenue South - Park Rapids MN 56470



website: www.AffinityRealEstate.com | email: info@affinityrealestate.com | office: 218-237-3333 | fax: 218-237-3377



\$115,000
MLS 6706045 Lake Land
TBD TBD
Ottertail MN 56571

website: www.AffinityRealEstate.com | email: info@affinityrealestate.com | office: 218-237-3333 | fax: 218-237-3377



\$115,000

MLS 6706045 Lake Land

TBD TBD

Ottertail MN 56571