



MLS 6706670 Lake Home

\$750,000

3,196 sq ft
3 bedrooms
5 baths

50757 Winterberry Drive
Cass Lake MN 56633

Waterfront: Midge


Status: Active

Description:

Lake Living at Its Finest! Bring the boat and get ready to enjoy! Step into this stunning Cape Cod-style lake home, exuding charm and elegance reminiscent of the Hamptons. Rare opportunity to own a home on a level lot with 100 feet of sandy shoreline and beach. Just 75 feet from the water's edge, this home offers breathtaking lake views and awe-inspiring sunrises and sunsets. Built in 2007, this quality-constructed home boasts 3 spacious bedrooms and 5 bathrooms. French doors, coved ceilings and many fine details. A conveniently located 20x27 garage makes unloading groceries a breeze, just steps from the custom kitchen, which features an oversized island with a prep sink and space for casual dining. Formal dining room as well! Vaulted ceilings and large windows allow natural light to pour in while nearly every room enjoys serene lake views. Highlights of this remarkable property include: A built-in library overlooking the living room. A grand dual staircase leading to the upper level. A huge 22 ft stone fireplace, perfect for cozy gatherings. An expansive upper-level great room ideal for a home office, artist's studio, or recreational space. Main floor bedroom ensuite and main floor laundry for ultimate convenience. Wi-Fi-controlled sprinkler system for effortless maintenance. Enjoy lake life to the fullest with opportunities for water sports and relaxation. Delight in the oversized front and back covered porches that add charm and make outdoor living a dream. The high curb appeal is enhanced by beautiful dormers and a maintenance-free exterior. Beautiful gardens and perennials offer privacy during the summer months. Midge Lake itself has beautiful and clear water quality and is 545 acres and a maximum depth of 24 feet. Enjoy fishing for crappie, sunfish, largemouth bass, pike, walleye, and more. The lake is Located just 15 minutes from Bemidji, this home provides both tranquility and convenience. Start making your summer memories by the lake in this captivating retreat. Home is nestled on a 1.08 acre lot. Your dream lake life awaits!

Additional Details:

Year Built	2007
Lot Acres	1.08
Lot Dimensions	412x119x450x100
Garage Stalls	2
School District	115
Taxes	\$8,634
Taxes with Assessments	\$8,626

1  Listed By: 2025
Headwaters Realty Services LLC

Additional Features:

Affinity Real Estate Inc. participates in the Regional Multiple Listing Service of Minnesota, Inc. Broker Reciprocity Program, allowing us to display other broker's listings on our website. All properties are subject to prior sale, change or withdrawal.

Driving Directions:

From Bemidji: Hwy 2 East to Winterberry Dr So.



Call Affinity Real Estate

218-237-3333

info@affinityrealestate.com

Water: Private Well Air Conditioning: Central Air



Affinity Real Estate - 600 Park Avenue South - Park Rapids MN 56470



website: www.AffinityRealEstate.com | email: info@affinityrealestate.com | office: 218-237-3333 | fax: 218-237-3377



\$750,000
 MLS 6706670 Lake Home
 50757 Winterberry Drive
 Cass Lake MN 56633



website: www.AffinityRealEstate.com | email: info@affinityrealestate.com | office: 218-237-3333 | fax: 218-237-3377

Affinity
REAL ESTATE INC

\$750,000
MLS 6706670 Lake Home
50757 Winterberry Drive
Cass Lake MN 56633



website: www.AffinityRealEstate.com | email: info@affinityrealestate.com | office: 218-237-3333 | fax: 218-237-3377

Affinity
REAL ESTATE INC

\$750,000
MLS 6706670 Lake Home
50757 Winterberry Drive
Cass Lake MN 56633



website: www.AffinityRealEstate.com | email: info@affinityrealestate.com | office: 218-237-3333 | fax: 218-237-3377



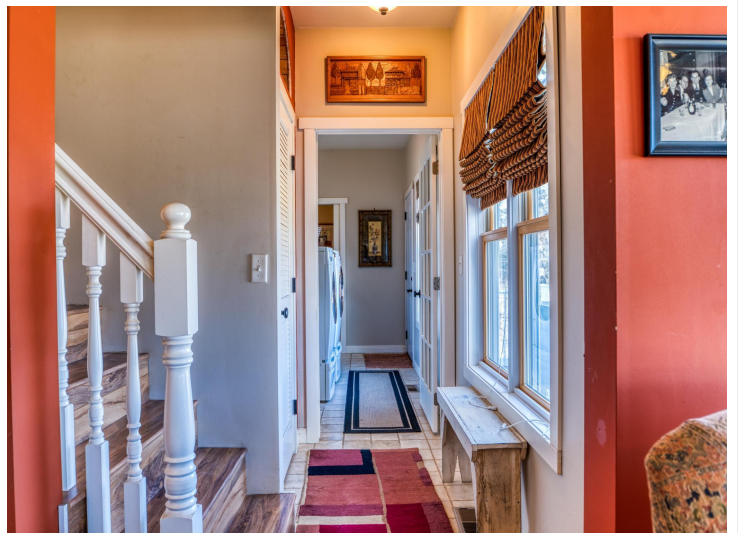
\$750,000
 MLS 6706670 Lake Home
 50757 Winterberry Drive
 Cass Lake MN 56633



website: www.AffinityRealEstate.com | email: info@affinityrealestate.com | office: 218-237-3333 | fax: 218-237-3377

Affinity
REAL ESTATE INC

\$750,000
MLS 6706670 Lake Home
50757 Winterberry Drive
Cass Lake MN 56633



website: www.AffinityRealEstate.com | email: info@affinityrealestate.com | office: 218-237-3333 | fax: 218-237-3377

Affinity
REAL ESTATE INC

\$750,000
MLS 6706670 Lake Home
50757 Winterberry Drive
Cass Lake MN 56633



website: www.AffinityRealEstate.com | email: info@affinityrealestate.com | office: 218-237-3333 | fax: 218-237-3377

Affinity
REAL ESTATE INC

\$750,000
MLS 6706670 Lake Home
50757 Winterberry Drive
Cass Lake MN 56633



website: www.AffinityRealEstate.com | email: info@affinityrealestate.com | office: 218-237-3333 | fax: 218-237-3377

Affinity
REAL ESTATE INC

\$750,000
MLS 6706670 Lake Home
50757 Winterberry Drive
Cass Lake MN 56633



website: www.AffinityRealEstate.com | email: info@affinityrealestate.com | office: 218-237-3333 | fax: 218-237-3377

Affinity
REAL ESTATE INC

\$750,000
MLS 6706670 Lake Home
50757 Winterberry Drive
Cass Lake MN 56633

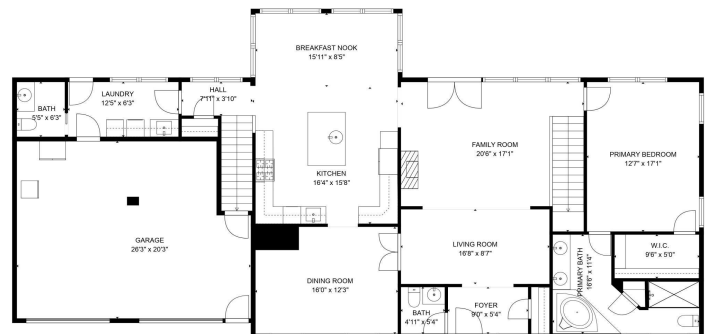


website: www.AffinityRealEstate.com | email: info@affinityrealestate.com | office: 218-237-3333 | fax: 218-237-3377

Affinity
REAL ESTATE INC

\$750,000

MLS 6706670 Lake Home
50757 Winterberry Drive
Cass Lake MN 56633



TOTAL: 2875 sq. ft.
 FLOOR 1: 1712 sq. ft., FLOOR 2: 913 sq. ft.
 EXCLUDED AREAS: GARAGE: 500 sq. ft., OPEN TO BELOW: 295 sq. ft., LOW CEILING: 133 sq. ft.,
 ATTIC: 394 sq. ft.
 FLOOR PLAN CREATED BY CURICASH AIR MEASUREMENTS DEEMED HIGHLY RELIABLE BUT NOT GUARANTEED.

website: www.AffinityRealEstate.com | email: info@affinityrealestate.com | office: 218-237-3333 | fax: 218-237-3377



\$750,000
 MLS 6706670 Lake Home
 50757 Winterberry Drive
 Cass Lake MN 56633