



MLS 6706986 Residential

\$220,000

768 sq ft
0 bedrooms
1 baths

10823 Bollenbacher Road
Brainerd MN 56401

Status: Active

Description:

A Perfect Getaway in a beautiful natural setting, this charming seasonal cabin offers a serene escape from the hustle and bustle of everyday life. The property spans 10 acres, providing ample space for outdoor activities. The cabin is perched above a 32x24 garage, ensuring convenient storage for vehicles and recreational equipment. The beautifully finished, one-room cabin has attractive half-log walls, creating a cozy, up-north atmosphere. The spacious cabin provides living and sleeping space, including a separation panel between the living and sleeping areas. The property is sold furnished, ensuring you can move in and enjoy your new retreat immediately. The inclusion of a gazebo and shed enhances its charm and functionality. The beautiful acreage is ideal for a variety of outdoor activities, including hunting, snowmobiling, four-wheeling, and more. With its proximity to Borden Lake and numerous other area lakes, water-based recreation is easily accessible. Whether you're looking for a place to enjoy winter sports or summer adventures, this property is ideally situated. Located just minutes from Garrison, you can access shops and healthcare, ensuring that necessities are within easy reach. Additionally, the property is just 25 minutes from Brainerd, offering access to further amenities and conveniences.

Additional Details:

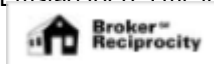
| | |
|------------------------|----------|
| Year Built | 2000 |
| Lot Acres | 9.98 |
| Lot Dimensions | 330x1335 |
| Garage Stalls | 2 |
| School District | 181 |
| Taxes | \$1,154 |
| Taxes with Assessments | \$1,154 |
| Tax Year | 2025 |

Additional Features:

Fuel: Electric **Heat:** Baseboard, Fireplace(s)

Driving Directions:

From Garrison, take State Hwy 18 for 1 1/4 miles to the left on County 10 SE. Continue 1 1/4 miles to the left on Emstad Road. Follow Emstad for 0.5 mi. to left on Bollenbacher Road. Continue 1/8 mil to left on property with sign.



Listed By:
Sandelands Realty

Affinity Real Estate Inc. participates in the Regional Multiple Listing Service of Minnesota, Inc Broker Reciprocity (sm) program, allowing us to display other broker's listings on our website. All properties are subject to prior sale, change or withdrawal.



Gail Affinity Real Estate

218-237-3333

info@affinityrealestate.com



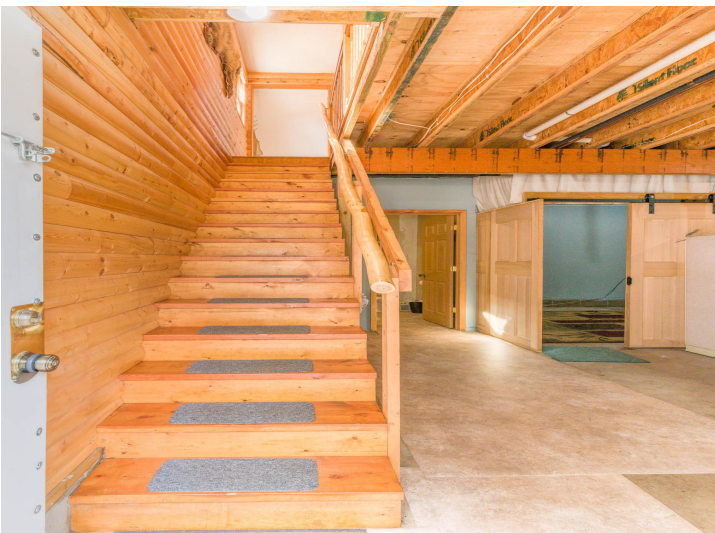
Affinity Real Estate - 600 Park Avenue South - Park Rapids MN 56470



website: www.AffinityRealEstate.com | email: info@affinityrealestate.com | office: 218-237-3333 | fax: 218-237-3377

Affinity
REAL ESTATE INC

\$220,000
MLS 6706986 Residential
10823 Bollenbacher Road
Brainerd MN 56401



website: www.AffinityRealEstate.com | email: info@affinityrealestate.com | office: 218-237-3333 | fax: 218-237-3377

Affinity
REAL ESTATE INC

\$220,000
MLS 6706986 Residential
10823 Bollenbacher Road
Brainerd MN 56401



website: www.AffinityRealEstate.com | email: info@affinityrealestate.com | office: 218-237-3333 | fax: 218-237-3377

Affinity
REAL ESTATE INC

\$220,000
MLS 6706986 Residential
10823 Bollenbacher Road
Brainerd MN 56401



website: www.AffinityRealEstate.com | email: info@affinityrealestate.com | office: 218-237-3333 | fax: 218-237-3377



\$220,000
 MLS 6706986 Residential
 10823 Bollenbacher Road
 Brainerd MN 56401



website: www.AffinityRealEstate.com | email: info@affinityrealestate.com | office: 218-237-3333 | fax: 218-237-3377

Affinity
REAL ESTATE INC

\$220,000
MLS 6706986 Residential
10823 Bollenbacher Road
Brainerd MN 56401



website: www.AffinityRealEstate.com | email: info@affinityrealestate.com | office: 218-237-3333 | fax: 218-237-3377



\$220,000
 MLS 6706986 Residential
 10823 Bollenbacher Road
 Brainerd MN 56401



website: www.AffinityRealEstate.com | email: info@affinityrealestate.com | office: 218-237-3333 | fax:218-237-3377



\$220,000
MLS 6706986 Residential
10823 Bollenbacher Road
Brainerd MN 56401