



MLS 6707000 Lake Land

\$195,000

Description:

Nearly 4 wooded acres with lakeshore on private Larson Lake, located just outside Hackensack. This property offers a peaceful, secluded setting with electricity & a drilled well already in place, making it suitable for a future home, cabin, or seasonal camper use.

The lot directly borders over 250 acres of public land, providing year-round recreational opportunities including hiking, snowmobiling, and hunting. Conveniently located near both Walker and the Brainerd Lakes Area for additional amenities, dining, and area lakes.

A versatile property with natural beauty, privacy, and multiple development options.

Additional Details:

Lot Acres	3.92
Lot Dimensions	170755.2
School District	113
Taxes	\$732
Taxes with Assessments	(unreported)
Tax Year	2025

Additional Features:

Driving Directions:

From Hackensack head north and turn right on Birch Lake rd, then take a left on 36th ave NW, and take your first right onto Lower Larson lake Rd NW, stay to the right and the property will be on the left side.



Listed By:
Real Broker, LLC

Affinity Real Estate Inc. participates in the Regional Multiple Listing Service of Minnesota, Inc Broker Reciprocity (sm) program, allowing us to display other broker's listings on our website. All properties are subject to prior sale, change or withdrawal.



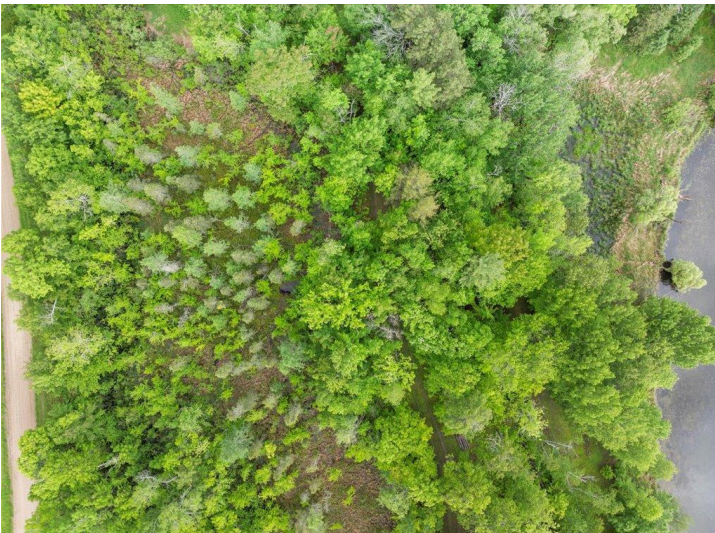
Call Affinity Real Estate

218-237-3333

info@affinityrealestate.com



Affinity Real Estate - 600 Park Avenue South - Park Rapids MN 56470



website: www.AffinityRealEstate.com | email: info@affinityrealestate.com | office: 218-237-3333 | fax: 218-237-3377



\$195,000
 MLS 6707000 Lake Land
 TBD Lower Larson Lane
 Hackensack MN 56452



website: www.AffinityRealEstate.com | email: info@affinityrealestate.com | office: 218-237-3333 | fax:218-237-3377



\$195,000

MLS 6707000 Lake Land
TBD Lower Larson Lane
Hackensack MN 56452