



MLS 6707318 Residential

\$689,900

3,432 sq ft
4 bedrooms
3 baths

4334 Roy Lk Drive
Nisswa MN 56468

Status: Active

Description:

Don't miss this executive four-bedroom, three-bath Nisswa home. Located just minutes from the Gull Chain and downtown Nisswa. The home features an open floor plan, stainless steel appliances, tiled back splash, hardwood floors, vaulted ceilings, gorgeous gas fireplace, a fully finished walkout basement, a wet bar with granite counter tops, an attached oversized three-car heated, insulated garage with epoxy floor, a large deck, fire pit and so much more!

Additional Details:

Year Built	2008
Lot Acres	2.32
Lot Dimensions	NEW LOT SPLIT
Garage Stalls	3
School District	181
Taxes	\$4,495
Taxes with Assessments	\$4,520
Tax Year	2025

Additional Features:

Fuel: Natural Gas **Heat:** Boiler, Forced Air

Driving Directions:

From the Co Rd 18/MN-371 Stoplight: From Co Rd 18, continue straight through the light to Colonel Thorp Ln. Turn left onto Hazelwood Dr. Right onto Lower Roy Lake Rd. Turn right onto E Roy Lake Rd. Left onto Roy Lake Dr, continue for approximately 2 miles. Home will be on the right.



Listed By:
eXp Realty

Affinity Real Estate Inc. participates in the Regional Multiple Listing Service of Minnesota, Inc Broker Reciprocity (sm) program, allowing us to display other broker's listings on our website. All properties are subject to prior sale, change or withdrawal.



Call Affinity Real Estate

218-237-3333

info@affinityrealestate.com



Affinity Real Estate - 600 Park Avenue South - Park Rapids MN 56470



website: www.AffinityRealEstate.com | email: info@affinityrealestate.com | office: 218-237-3333 | fax: 218-237-3377



\$689,900
 MLS 6707318 Residential
 4334 Roy Lk Drive
 Nisswa MN 56468



website: www.AffinityRealEstate.com | email: info@affinityrealestate.com | office: 218-237-3333 | fax: 218-237-3377

Affinity
REAL ESTATE INC

\$689,900
MLS 6707318 Residential
4334 Roy Lk Drive
Nisswa MN 56468



website: www.AffinityRealEstate.com | email: info@affinityrealestate.com | office: 218-237-3333 | fax: 218-237-3377

Affinity
REAL ESTATE INC

\$689,900
MLS 6707318 Residential
4334 Roy Lk Drive
Nisswa MN 56468



website: www.AffinityRealEstate.com | email: info@affinityrealestate.com | office: 218-237-3333 | fax: 218-237-3377

Affinity
REAL ESTATE INC

\$689,900
MLS 6707318 Residential
4334 Roy Lk Drive
Nisswa MN 56468



website: www.AffinityRealEstate.com | email: info@affinityrealestate.com | office: 218-237-3333 | fax: 218-237-3377

Affinity
REAL ESTATE INC

\$689,900
MLS 6707318 Residential
4334 Roy Lk Drive
Nisswa MN 56468



website: www.AffinityRealEstate.com | email: info@affinityrealestate.com | office: 218-237-3333 | fax: 218-237-3377



\$689,900
 MLS 6707318 Residential
 4334 Roy Lk Drive
 Nisswa MN 56468



website: www.AffinityRealEstate.com | email: info@affinityrealestate.com | office: 218-237-3333 | fax: 218-237-3377



\$689,900
MLS 6707318 Residential
4334 Roy Lk Drive
Nisswa MN 56468



website: www.AffinityRealEstate.com | email: info@affinityrealestate.com | office: 218-237-3333 | fax: 218-237-3377

Affinity
REAL ESTATE INC

\$689,900
MLS 6707318 Residential
4334 Roy Lk Drive
Nisswa MN 56468



website: www.AffinityRealEstate.com | email: info@affinityrealestate.com | office: 218-237-3333 | fax: 218-237-3377



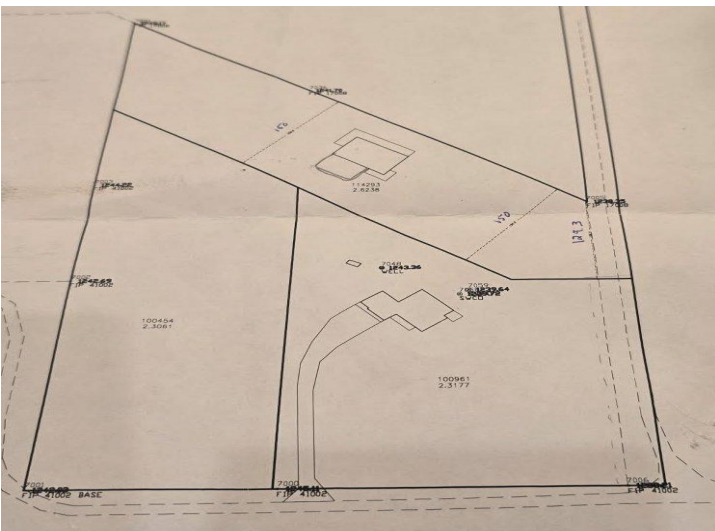
\$689,900
 MLS 6707318 Residential
 4334 Roy Lk Drive
 Nisswa MN 56468



website: www.AffinityRealEstate.com | email: info@affinityrealestate.com | office: 218-237-3333 | fax: 218-237-3377

Affinity
REAL ESTATE INC

\$689,900
MLS 6707318 Residential
4334 Roy Lk Drive
Nisswa MN 56468



website: www.AffinityRealEstate.com | email: info@affinityrealestate.com | office: 218-237-3333 | fax: 218-237-3377



\$689,900
 MLS 6707318 Residential
 4334 Roy Lk Drive
 Nisswa MN 56468