



MLS 6707414 Lake Home

**\$359,900**

2,026 sq ft  
3 bedrooms  
2 baths

1587 Stallion Road  
Pillager MN 56473

Waterfront: Unnamed

Status: Active

#### Description:

Discover Your Dream Retreat on Kramer Lake! Nestled on a stunning 5.5-acre south-facing lot, this exquisite 3-bedroom, 2-bathroom, 2,026 sq. ft. single-story home offers the perfect blend of serenity and convenience, just minutes from Baxter and Brainerd. Embrace the beauty of lakeside living with a private deck ideal for kayaking, canoeing, or simply savoring the peaceful wildlife vistas. Winter brings endless adventure with snowshoeing, cross-country skiing, and more right at your doorstep. Also enjoy a Gull River access Lot to keep a boat or dock.

Step inside to find a thoughtfully designed interior featuring soaring vaulted ceilings, a spacious kitchen with a central island, and a cozy sitting room perfect for relaxation. The home boasts three generously sized bedrooms, two modern bathrooms, and the convenience of main-floor laundry. This tranquil haven combines elegant comfort with the joys of nature, making it a rare gem you'll love calling home!

#### Additional Details:

Year Built	2001
Lot Acres	5.5
Lot Dimensions	390x589x460x570
Garage Stalls	2
School District	116
Taxes	\$2,736
Taxes with Assessments	\$2,736
Tax Year	2025

#### Additional Features:

**Basement:** Crawl Space **Fuel:** Propane **Garage:** 2 **Heat:** Forced Air, Wood Stove **Sewer:** Septic System Compliant - Yes, Tank with Drainage Field **Water:** Drilled, Well **Air Conditioning:** Central Air

#### Driving Directions:

210 west to cr 36 to right on oakridge road to Stallion Rd on left to home at the end of road # 1587



Listed By:  
LPT Realty, LLC

Affinity Real Estate Inc. participates in the Regional Multiple Listing Service of Minnesota, Inc Broker Reciprocity (sm) program, allowing us to display other broker's listings on our website. All properties are subject to prior sale, change or withdrawal.



Call Affinity Real Estate

**218-237-3333**

[info@affinityrealestate.com](mailto:info@affinityrealestate.com)



Affinity Real Estate - 600 Park Avenue South - Park Rapids MN 56470





website: [www.AffinityRealEstate.com](http://www.AffinityRealEstate.com) | email: [info@affinityrealestate.com](mailto:info@affinityrealestate.com) | office: 218-237-3333 | fax: 218-237-3377



**\$359,900**  
 MLS 6707414 Lake Home  
 1587 Stallion Road  
 Pillager MN 56473





website: [www.AffinityRealEstate.com](http://www.AffinityRealEstate.com) | email: [info@affinityrealestate.com](mailto:info@affinityrealestate.com) | office: 218-237-3333 | fax: 218-237-3377

**Affinity**  
REAL ESTATE INC

**\$359,900**  
MLS 6707414 Lake Home  
1587 Stallion Road  
Pillager MN 56473



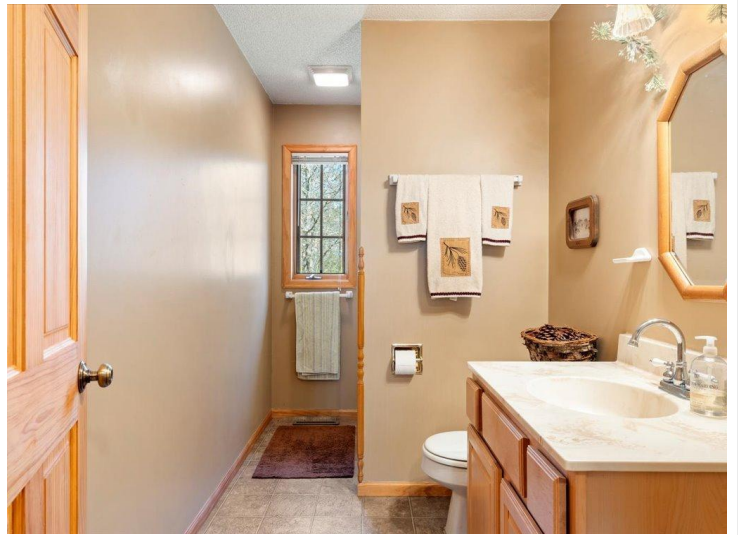


website: [www.AffinityRealEstate.com](http://www.AffinityRealEstate.com) | email: [info@affinityrealestate.com](mailto:info@affinityrealestate.com) | office: 218-237-3333 | fax: 218-237-3377

**Affinity**  
REAL ESTATE INC

**\$359,900**  
MLS 6707414 Lake Home  
1587 Stallion Road  
Pillager MN 56473





website: [www.AffinityRealEstate.com](http://www.AffinityRealEstate.com) | email: [info@affinityrealestate.com](mailto:info@affinityrealestate.com) | office: 218-237-3333 | fax: 218-237-3377

**Affinity**  
REAL ESTATE INC

**\$359,900**  
MLS 6707414 Lake Home  
1587 Stallion Road  
Pillager MN 56473





website: [www.AffinityRealEstate.com](http://www.AffinityRealEstate.com) | email: [info@affinityrealestate.com](mailto:info@affinityrealestate.com) | office: 218-237-3333 | fax: 218-237-3377

**Affinity**  
REAL ESTATE INC

**\$359,900**  
MLS 6707414 Lake Home  
1587 Stallion Road  
Pillager MN 56473





website: [www.AffinityRealEstate.com](http://www.AffinityRealEstate.com) | email: [info@affinityrealestate.com](mailto:info@affinityrealestate.com) | office: 218-237-3333 | fax: 218-237-3377



**\$359,900**  
MLS 6707414 Lake Home  
1587 Stallion Road  
Pillager MN 56473



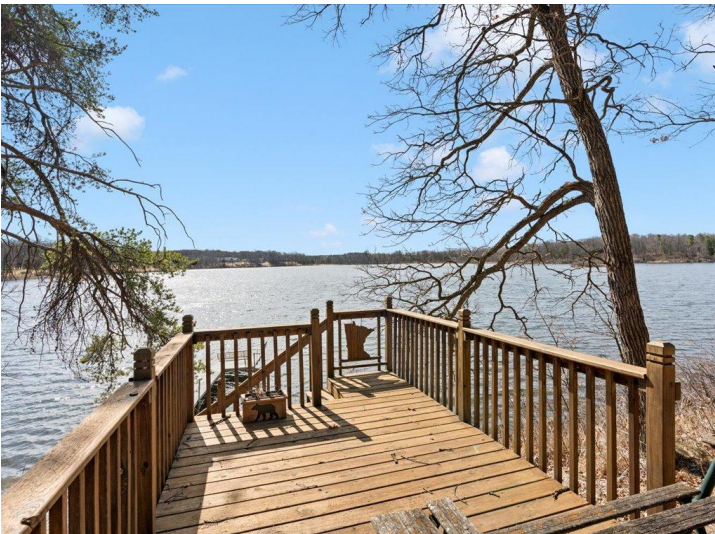


website: [www.AffinityRealEstate.com](http://www.AffinityRealEstate.com) | email: [info@affinityrealestate.com](mailto:info@affinityrealestate.com) | office: 218-237-3333 | fax: 218-237-3377



**\$359,900**  
 MLS 6707414 Lake Home  
 1587 Stallion Road  
 Pillager MN 56473





website: [www.AffinityRealEstate.com](http://www.AffinityRealEstate.com) | email: [info@affinityrealestate.com](mailto:info@affinityrealestate.com) | office: 218-237-3333 | fax: 218-237-3377



**\$359,900**  
 MLS 6707414 Lake Home  
 1587 Stallion Road  
 Pillager MN 56473



website: [www.AffinityRealEstate.com](http://www.AffinityRealEstate.com) | email: [info@affinityrealestate.com](mailto:info@affinityrealestate.com) | office: 218-237-3333 | fax:218-237-3377



**\$359,900**

MLS 6707414 Lake Home  
1587 Stallion Road  
Pillager MN 56473