



MLS 6707809 Lake Home

**\$575,000**

816 sq ft  
2 bedrooms  
1 baths

5810 Birchdale Road  
Brainerd MN 56401

Waterfront: North Long

Status: Pending

#### Description:

Must see North Long Lake cabin. This two-bedroom, one-bathroom property features 91 feet of excellent sandy frontage, storage shed (10x12) by the lake, a bunkhouse (22x12) for overflow sleeping, shop to store lawn tools, and beautiful flower gardens. Inside the cabin you will enjoy the amazing views over the lake, vaulted ceilings, tongue and groove finishes, gas fire stove, and plenty of storage room in the basement. Imagine sitting on the lakeside deck watching the sunset after a day on the water. North Long Lake is one of the premier lakes in the Brainerd area for recreation and fishing. Close to championship golf, great restaurants, and shopping conveniences of Brainerd/Baxter. Schedule your showing today!

#### Additional Details:

Year Built	1920
Lot Acres	0.35
Lot Dimensions	91x169
School District	181
Taxes	\$2,172
Taxes with Assessments	\$2,172
Tax Year	2024

#### Additional Features:

**Basement:** Full, Unfinished **Fuel:** Electric, Natural Gas **Heat:** Baseboard, Fireplace(s) **Sewer:** Private Sewer, Tank with Drainage Field  
**Water:** Submersible - 4 Inch, Drilled, Private, Well **Air Conditioning:** Wall Unit(s), Window Unit(s)

#### Driving Directions:

take highway 371 N from baxter, turn right on birchdale road until property number 5810.



Listed By:  
eXp Realty

Affinity Real Estate Inc. participates in the Regional Multiple Listing Service of Minnesota, Inc Broker Reciprocity (sm) program, allowing us to display other broker's listings on our website. All properties are subject to prior sale, change or withdrawal.



Call Affinity Real Estate

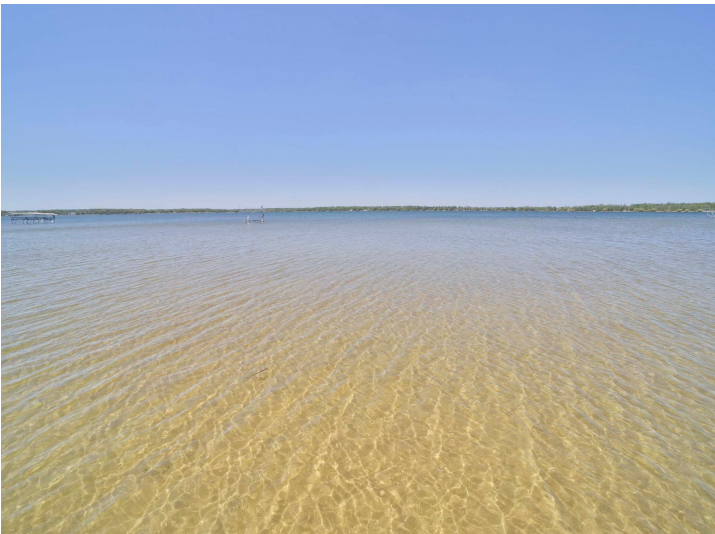
**218-237-3333**

[info@affinityrealestate.com](mailto:info@affinityrealestate.com)



Affinity Real Estate - 600 Park Avenue South - Park Rapids MN 56470



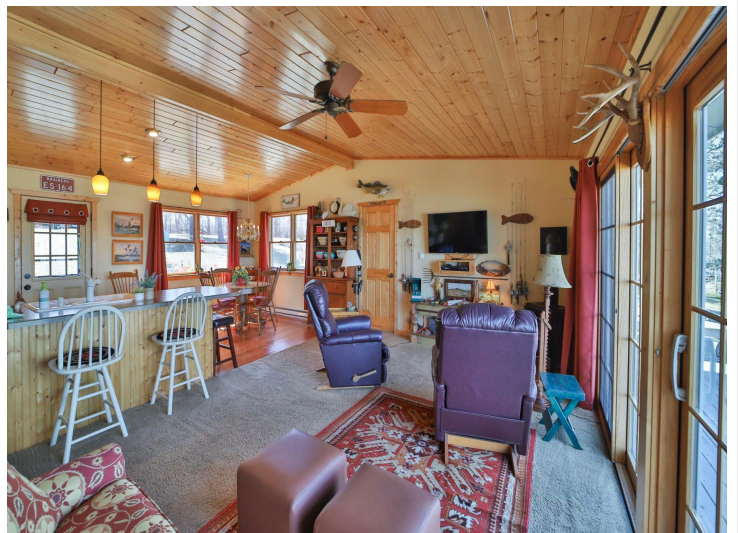


website: [www.AffinityRealEstate.com](http://www.AffinityRealEstate.com) | email: [info@affinityrealestate.com](mailto:info@affinityrealestate.com) | office: 218-237-3333 | fax: 218-237-3377

**Affinity**  
REAL ESTATE INC

**\$575,000**  
MLS 6707809 Lake Home  
5810 Birchdale Road  
Brainerd MN 56401



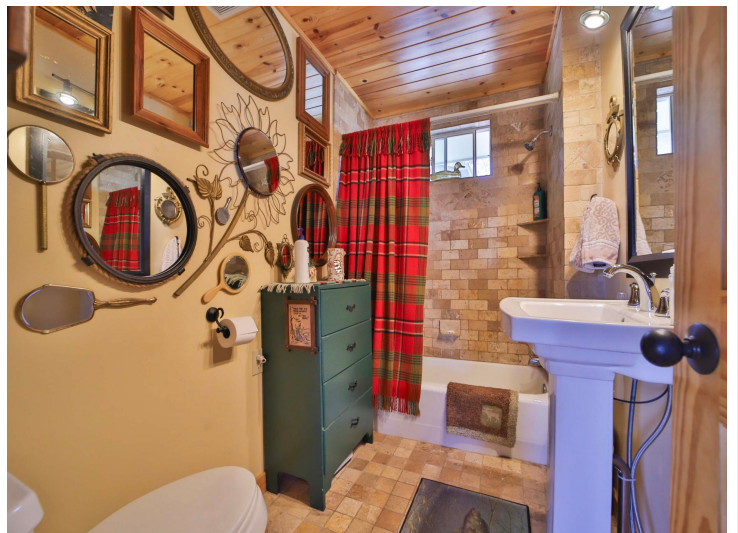


website: [www.AffinityRealEstate.com](http://www.AffinityRealEstate.com) | email: [info@affinityrealestate.com](mailto:info@affinityrealestate.com) | office: 218-237-3333 | fax: 218-237-3377

**Affinity**  
REAL ESTATE INC

**\$575,000**  
MLS 6707809 Lake Home  
5810 Birchdale Road  
Brainerd MN 56401





website: [www.AffinityRealEstate.com](http://www.AffinityRealEstate.com) | email: [info@affinityrealestate.com](mailto:info@affinityrealestate.com) | office: 218-237-3333 | fax: 218-237-3377

**Affinity**  
REAL ESTATE INC

**\$575,000**  
MLS 6707809 Lake Home  
5810 Birchdale Road  
Brainerd MN 56401





website: [www.AffinityRealEstate.com](http://www.AffinityRealEstate.com) | email: [info@affinityrealestate.com](mailto:info@affinityrealestate.com) | office: 218-237-3333 | fax: 218-237-3377

**Affinity**  
REAL ESTATE INC

**\$575,000**  
MLS 6707809 Lake Home  
5810 Birchdale Road  
Brainerd MN 56401





website: [www.AffinityRealEstate.com](http://www.AffinityRealEstate.com) | email: [info@affinityrealestate.com](mailto:info@affinityrealestate.com) | office: 218-237-3333 | fax: 218-237-3377

**Affinity**  
REAL ESTATE INC

**\$575,000**  
MLS 6707809 Lake Home  
5810 Birchdale Road  
Brainerd MN 56401





website: [www.AffinityRealEstate.com](http://www.AffinityRealEstate.com) | email: [info@affinityrealestate.com](mailto:info@affinityrealestate.com) | office: 218-237-3333 | fax: 218-237-3377



**\$575,000**  
 MLS 6707809 Lake Home  
 5810 Birchdale Road  
 Brainerd MN 56401





website: [www.AffinityRealEstate.com](http://www.AffinityRealEstate.com) | email: [info@affinityrealestate.com](mailto:info@affinityrealestate.com) | office: 218-237-3333 | fax: 218-237-3377



**\$575,000**  
 MLS 6707809 Lake Home  
 5810 Birchdale Road  
 Brainerd MN 56401





website: [www.AffinityRealEstate.com](http://www.AffinityRealEstate.com) | email: [info@affinityrealestate.com](mailto:info@affinityrealestate.com) | office: 218-237-3333 | fax: 218-237-3377

**Affinity**  
REAL ESTATE INC

**\$575,000**  
MLS 6707809 Lake Home  
5810 Birchdale Road  
Brainerd MN 56401





website: [www.AffinityRealEstate.com](http://www.AffinityRealEstate.com) | email: [info@affinityrealestate.com](mailto:info@affinityrealestate.com) | office: 218-237-3333 | fax: 218-237-3377



**\$575,000**  
MLS 6707809 Lake Home  
5810 Birchdale Road  
Brainerd MN 56401