



MLS 6707836 Residential

**\$269,900**

1,016 sq ft  
2 bedrooms  
1 baths

12884 11th Avenue  
Brainerd MN 56401

Status: Pending

**Description:**

Charming 2-bedroom, one-story home located on a lovely 3-acre wooded lot just a short drive to Brainerd/Baxter and Pillager. Well-maintained and move-in ready! The open kitchen and living room are spacious with an eat-in dining area and good storage. The front living room has views of the front yard and you can walk out to the front deck which provides nice space to enjoy summer months outside. The 2 bedrooms have backyard views and good closet space. Outside, the detached 2-car garage offers plenty of storage for vehicles, tools, and outdoor toys. The yard overlooks wetlands to the north and has nice privacy (a portion of the pond is on the property.) Conveniently located to shopping, restaurants and amenities. Schools can be Brainerd or Pillager.

**Additional Details:**

Year Built	1992
Lot Acres	3
Lot Dimensions	331x399x330x399
Garage Stalls	2
School District	116
Taxes	\$1,100
Taxes with Assessments	\$1,100
Tax Year	2025

**Additional Features:**

**Basement:** Block, Crawl Space, Storage Space, Unfinished **Fuel:** Natural Gas **Garage:** 2 **Heat:** Forced Air **Sewer:** Private Sewer, Tank with Drainage Field **Water:** Private, Well **Air Conditioning:** Window Unit(s)

**Driving Directions:**

210 to 11th Avenue SW, south to home on your left



Listed By:  
Counselor Realty, Inc

Affinity Real Estate Inc. participates in the Regional Multiple Listing Service of Minnesota, Inc Broker Reciprocity (sm) program, allowing us to display other broker's listings on our website. All properties are subject to prior sale, change or withdrawal.



**Call Affinity Real Estate**

**218-237-3333**

**info@affinityrealestate.com**



**Affinity Real Estate - 600 Park Avenue South - Park Rapids MN 56470**





website: [www.AffinityRealEstate.com](http://www.AffinityRealEstate.com) | email: [info@affinityrealestate.com](mailto:info@affinityrealestate.com) | office: 218-237-3333 | fax: 218-237-3377



**\$269,900**  
MLS 6707836 Residential  
12884 11th Avenue  
Brainerd MN 56401



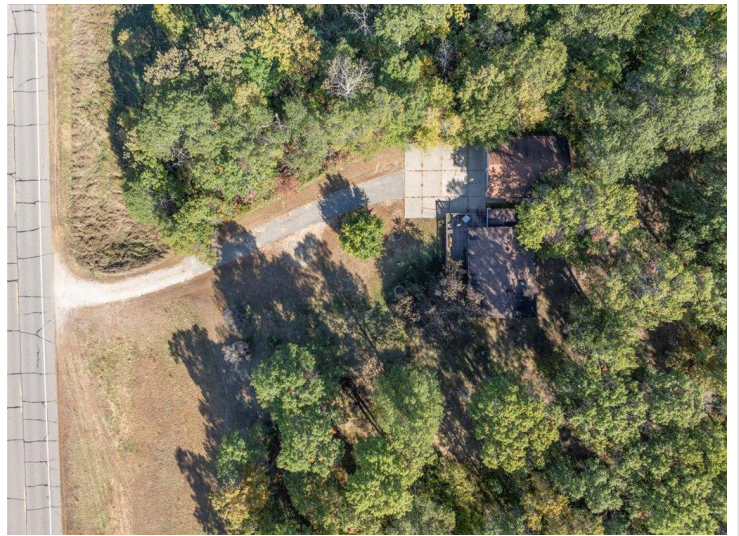


website: [www.AffinityRealEstate.com](http://www.AffinityRealEstate.com) | email: [info@affinityrealestate.com](mailto:info@affinityrealestate.com) | office: 218-237-3333 | fax: 218-237-3377



**\$269,900**  
 MLS 6707836 Residential  
 12884 11th Avenue  
 Brainerd MN 56401





website: [www.AffinityRealEstate.com](http://www.AffinityRealEstate.com) | email: [info@affinityrealestate.com](mailto:info@affinityrealestate.com) | office: 218-237-3333 | fax: 218-237-3377



**\$269,900**  
 MLS 6707836 Residential  
 12884 11th Avenue  
 Brainerd MN 56401





website: [www.AffinityRealEstate.com](http://www.AffinityRealEstate.com) | email: [info@affinityrealestate.com](mailto:info@affinityrealestate.com) | office: 218-237-3333 | fax: 218-237-3377



**\$269,900**  
 MLS 6707836 Residential  
 12884 11th Avenue  
 Brainerd MN 56401





website: [www.AffinityRealEstate.com](http://www.AffinityRealEstate.com) | email: [info@affinityrealestate.com](mailto:info@affinityrealestate.com) | office: 218-237-3333 | fax: 218-237-3377

**Affinity**  
REAL ESTATE INC

**\$269,900**  
MLS 6707836 Residential  
12884 11th Avenue  
Brainerd MN 56401





website: [www.AffinityRealEstate.com](http://www.AffinityRealEstate.com) | email: [info@affinityrealestate.com](mailto:info@affinityrealestate.com) | office: 218-237-3333 | fax: 218-237-3377

**Affinity**  
REAL ESTATE INC

**\$269,900**  
MLS 6707836 Residential  
12884 11th Avenue  
Brainerd MN 56401