



MLS 6707923 Lake Home

**\$600,000**

2,304 sq ft  
3 bedrooms  
2 baths

27142 Loon Point  
Pequot Lakes MN 56472

Waterfront: West Twin Lake  
(Pequot Lakes City)

Status: Active

**Description:**

Enjoy year-round living on pristine spring-fed West Twin Lake. This home boasts over \$120,000 in upgrades and 96 feet of lake frontage with a hard sand bottom set on a wooded lot featuring a beautiful mix of mature trees and landscaping. Indoors, you'll love the open floor plan and the finished walkout lower level, perfect for entertaining or relaxing. Wake up to gorgeous sunrise views from the spacious deck. Cozy up in the evenings to an outdoor fire or enjoy the three-season porch with full protection from diverse weather. West Twin Lake is ideal for boating, paddleboarding, sailing, swimming, bass and pan fishing, and more. It's a short drive to Pequot Lakes, Nisswa, and Brainerd, where you'll find various boutiques and all the big-name stores. Plentiful dining options are available in every direction. Outdoor enthusiasts will appreciate the lake's renowned golf courses and the Paul Bunyan Trail, perfect for biking, walking, and cross-country skiing just across the road. The land of 10,000 lakes surrounds this home, including the Gull Lake Chain. The four-season lake environment awaits you this year!

**Additional Details:**

Year Built	1974
Lot Acres	0.68
Garage Stalls	3
School District	186
Taxes	\$3,083
Taxes with Assessments	\$3,108
Tax Year	2025

**Additional Features:**

**Basement:** Block, Daylight/Lookout Windows, Egress Window(s), Finished, Full, Owner Access, Concrete, Posts, Slab, Storage Space **Fuel:** Natural Gas **Garage:** 3 **Heat:** Forced Air **Sewer:** Private Sewer, Septic System Compliant - Yes, Tank with Drainage Field **Water:** Drilled, Private, Well **Air Conditioning:** Central Air

**Driving Directions:**

Take MN 371 going north past Nisswa, turn left on County Road 29, turn right on West Twin Lake Drive, Loon Point will be on your right.



Listed By:  
Edina Realty, Inc.

Affinity Real Estate Inc. participates in the Regional Multiple Listing Service of Minnesota, Inc Broker Reciprocity (sm) program, allowing us to display other broker's listings on our website. All properties are subject to prior sale, change or withdrawal.



**Call Affinity Real Estate**

**218-237-3333**

**info@affinityrealestate.com**



**Affinity Real Estate - 600 Park Avenue South - Park Rapids MN 56470**





website: [www.AffinityRealEstate.com](http://www.AffinityRealEstate.com) | email: [info@affinityrealestate.com](mailto:info@affinityrealestate.com) | office: 218-237-3333 | fax: 218-237-3377



**\$600,000**  
 MLS 6707923 Lake Home  
 27142 Loon Point  
 Pequot Lakes MN 56472





website: [www.AffinityRealEstate.com](http://www.AffinityRealEstate.com) | email: [info@affinityrealestate.com](mailto:info@affinityrealestate.com) | office: 218-237-3333 | fax: 218-237-3377

**Affinity**  
REAL ESTATE INC

**\$600,000**  
MLS 6707923 Lake Home  
27142 Loon Point  
Pequot Lakes MN 56472



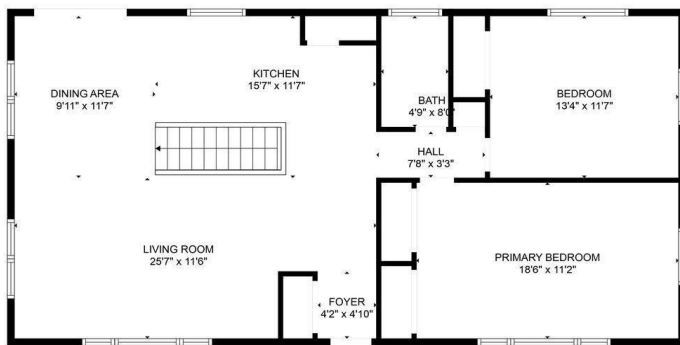


website: [www.AffinityRealEstate.com](http://www.AffinityRealEstate.com) | email: [info@affinityrealestate.com](mailto:info@affinityrealestate.com) | office: 218-237-3333 | fax: 218-237-3377

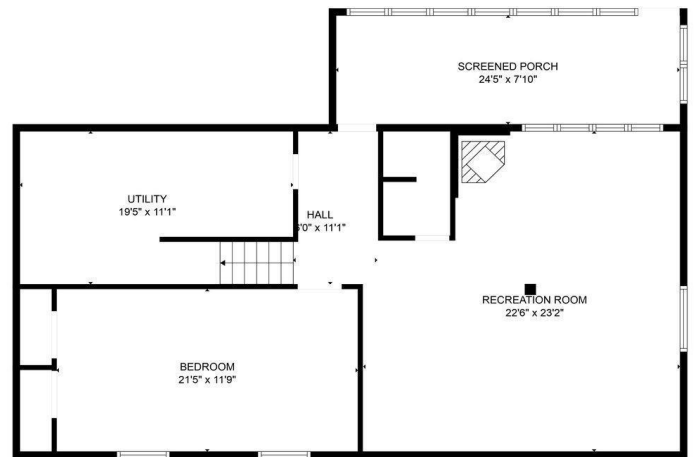


**\$600,000**  
 MLS 6707923 Lake Home  
 27142 Loon Point  
 Pequot Lakes MN 56472

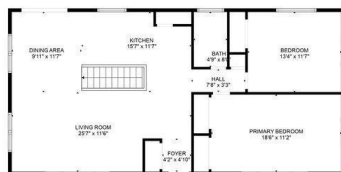




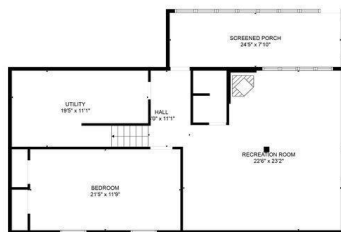
FLOOR PLAN CREATED BY CUBICASA APP. MEASUREMENTS DEEMED HIGHLY RELIABLE BUT NOT GUARANTEED.



FLOOR PLAN CREATED BY CUBICASA APP. MEASUREMENTS DEEMED HIGHLY RELIABLE BUT NOT GUARANTEED.



FLOOR 2:



FLOOR 1:

FLOOR PLAN CREATED BY CUBICASA APP. MEASUREMENTS DEEMED HIGHLY RELIABLE BUT NOT GUARANTEED.



website: [www.AffinityRealEstate.com](http://www.AffinityRealEstate.com) | email: [info@affinityrealestate.com](mailto:info@affinityrealestate.com) | office: 218-237-3333 | fax: 218-237-3377



**\$600,000**  
MLS 6707923 Lake Home  
27142 Loon Point  
Pequot Lakes MN 56472





website: [www.AffinityRealEstate.com](http://www.AffinityRealEstate.com) | email: [info@affinityrealestate.com](mailto:info@affinityrealestate.com) | office: 218-237-3333 | fax: 218-237-3377



**\$600,000**  
MLS 6707923 Lake Home  
27142 Loon Point  
Pequot Lakes MN 56472





website: [www.AffinityRealEstate.com](http://www.AffinityRealEstate.com) | email: [info@affinityrealestate.com](mailto:info@affinityrealestate.com) | office: 218-237-3333 | fax: 218-237-3377



**\$600,000**  
 MLS 6707923 Lake Home  
 27142 Loon Point  
 Pequot Lakes MN 56472





website: [www.AffinityRealEstate.com](http://www.AffinityRealEstate.com) | email: [info@affinityrealestate.com](mailto:info@affinityrealestate.com) | office: 218-237-3333 | fax: 218-237-3377



**\$600,000**

MLS 6707923 Lake Home  
27142 Loon Point  
Pequot Lakes MN 56472



website: [www.AffinityRealEstate.com](http://www.AffinityRealEstate.com) | email: [info@affinityrealestate.com](mailto:info@affinityrealestate.com) | office: 218-237-3333 | fax:218-237-3377



**\$600,000**

MLS 6707923 Lake Home  
27142 Loon Point  
Pequot Lakes MN 56472



website: [www.AffinityRealEstate.com](http://www.AffinityRealEstate.com) | email: [info@affinityrealestate.com](mailto:info@affinityrealestate.com) | office: 218-237-3333 | fax:218-237-3377



**\$600,000**

MLS 6707923 Lake Home  
27142 Loon Point  
Pequot Lakes MN 56472



website: [www.AffinityRealEstate.com](http://www.AffinityRealEstate.com) | email: [info@affinityrealestate.com](mailto:info@affinityrealestate.com) | office: 218-237-3333 | fax:218-237-3377



**\$600,000**

MLS 6707923 Lake Home  
27142 Loon Point  
Pequot Lakes MN 56472