



MLS 6707984 Residential

\$550,000

1,350 sq ft
3 bedrooms
1 baths

6411 County 38
Walker MN 56484

Status: Pending

Description:

Rare 58 acres for sale in a prime location just 3 miles NW of Walker, MN. This has been a family-owned property for over 70 years. Acreage borders approx. 50,000 acres of Paul Bunyon State Forest and Minnesota State Land. This land is located right west of Erickson Lake Boat Ramp on Leech Lake and across from Kabekona Village. Endless amounts of possibilities with outdoor recreation, hunting, water sports and more. Living quarters in a small apartment above the workspace plus in a separate cabin. Property was a working greenhouse and hobby farm in years past. Structures are antiquated and sit on land that hasn't been farmed for decades or have had any chemicals applied to the land in last 70+ years. Spring fed pond on west side of house. Paul Bunyon State Trail runs along County Road 38 which borders north side of property. This is a rare find and won't last long!

Additional Details:

Year Built	1926
Lot Acres	57.58
Lot Dimensions	irregular
Garage Stalls	2
School District	113
Taxes	\$1,204
Taxes with Assessments	\$1,270
Tax Year	2025

Additional Features:

Basement: Unfinished **Fuel:** Electric **Garage:** 2 **Heat:** Baseboard **Sewer:** Private Sewer, Septic System Compliant - No **Water:** Drilled **Air Conditioning:** None

Driving Directions:

Hwy 371 turn Left to Hwy 38 Home is on the Left



Listed By:
National Realty Guild

Affinity Real Estate Inc. participates in the Regional Multiple Listing Service of Minnesota, Inc Broker Reciprocity (sm) program, allowing us to display other broker's listings on our website. All properties are subject to prior sale, change or withdrawal.



Call Affinity Real Estate

218-237-3333

info@affinityrealestate.com



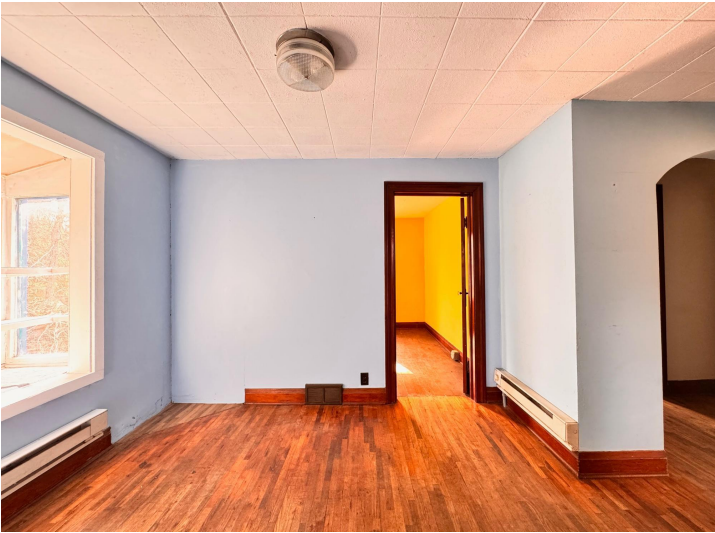
Affinity Real Estate - 600 Park Avenue South - Park Rapids MN 56470



website: www.AffinityRealEstate.com | email: info@affinityrealestate.com | office: 218-237-3333 | fax: 218-237-3377

Affinity
REAL ESTATE INC

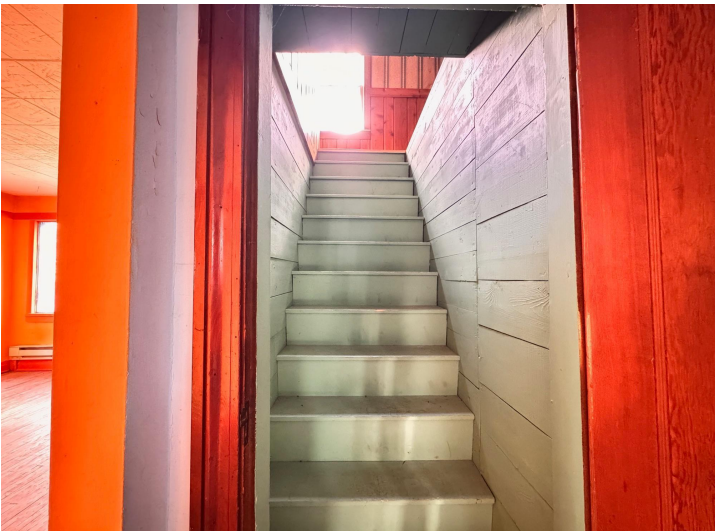
\$550,000
MLS 6707984 Residential
6411 County 38
Walker MN 56484



website: www.AffinityRealEstate.com | email: info@affinityrealestate.com | office: 218-237-3333 | fax: 218-237-3377

Affinity
REAL ESTATE INC

\$550,000
MLS 6707984 Residential
6411 County 38
Walker MN 56484



website: www.AffinityRealEstate.com | email: info@affinityrealestate.com | office: 218-237-3333 | fax: 218-237-3377

Affinity
REAL ESTATE INC

\$550,000
MLS 6707984 Residential
6411 County 38
Walker MN 56484



website: www.AffinityRealEstate.com | email: info@affinityrealestate.com | office: 218-237-3333 | fax: 218-237-3377



\$550,000
MLS 6707984 Residential
6411 County 38
Walker MN 56484



website: www.AffinityRealEstate.com | email: info@affinityrealestate.com | office: 218-237-3333 | fax: 218-237-3377

Affinity
REAL ESTATE INC

\$550,000
MLS 6707984 Residential
6411 County 38
Walker MN 56484



website: www.AffinityRealEstate.com | email: info@affinityrealestate.com | office: 218-237-3333 | fax: 218-237-3377

Affinity
REAL ESTATE INC

\$550,000
MLS 6707984 Residential
6411 County 38
Walker MN 56484



website: www.AffinityRealEstate.com | email: info@affinityrealestate.com | office: 218-237-3333 | fax: 218-237-3377



\$550,000
 MLS 6707984 Residential
 6411 County 38
 Walker MN 56484



website: www.AffinityRealEstate.com | email: info@affinityrealestate.com | office: 218-237-3333 | fax:218-237-3377



\$550,000
MLS 6707984 Residential
6411 County 38
Walker MN 56484