



MLS 6708131 Residential

\$369,000

2,576 sq ft
3 bedrooms
3 baths

868 Park Drive
Detroit Lakes MN 56501

Status: Active

Description:

This charming home sits in the quiet neighborhood of Willow Springs in the city limits of Detroit Lakes. The home offers 3 bedrooms and 3 bathrooms with ample space on both floors for living, a good size deck off the dining area, a spacious and useable yard and fabulous patio area overlooking the front yard. This a one-owner home and has been tastefully updated and cared for. As a bonus, the road was paved in 2024, the land behind the house has a wildlife pond and will not be developed and the seller has paid off the Special Assessments for the road improvements.

Additional Details:

Year Built	2000
Lot Acres	0.46
Lot Dimensions	100x200
Garage Stalls	2
School District	22
Taxes	\$2,514
Taxes with Assessments	\$2,594
Tax Year	2025

Additional Features:

Fuel: Natural Gas **Heat:** Forced Air

Driving Directions:

From Detroit Lakes, take US HWY 59 North to Willow Springs Road, turn right and travel .3 miles to Park Dr, turn left and look for the property on the right.



Listed By:
Counselor Realty Detroit Lakes

Affinity Real Estate Inc. participates in the Regional Multiple Listing Service of Minnesota, Inc Broker Reciprocity (sm) program, allowing us to display other broker's listings on our website. All properties are subject to prior sale, change or withdrawal.



Call Affinity Real Estate

218-237-3333

info@affinityrealestate.com



Affinity Real Estate - 600 Park Avenue South - Park Rapids MN 56470



website: www.AffinityRealEstate.com | email: info@affinityrealestate.com | office: 218-237-3333 | fax: 218-237-3377



\$369,000
MLS 6708131 Residential
868 Park Drive
Detroit Lakes MN 56501



website: www.AffinityRealEstate.com | email: info@affinityrealestate.com | office: 218-237-3333 | fax: 218-237-3377

Affinity
REAL ESTATE INC

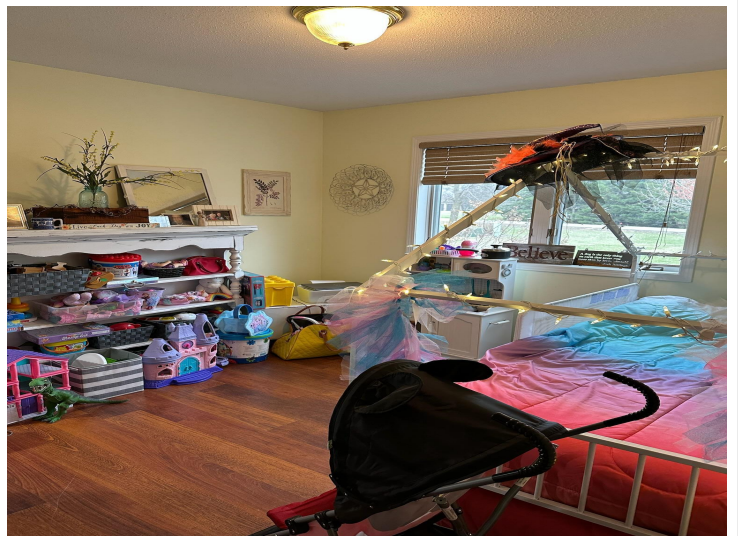
\$369,000
MLS 6708131 Residential
868 Park Drive
Detroit Lakes MN 56501



website: www.AffinityRealEstate.com | email: info@affinityrealestate.com | office: 218-237-3333 | fax: 218-237-3377

Affinity
REAL ESTATE INC

\$369,000
MLS 6708131 Residential
868 Park Drive
Detroit Lakes MN 56501



website: www.AffinityRealEstate.com | email: info@affinityrealestate.com | office: 218-237-3333 | fax: 218-237-3377

Affinity
REAL ESTATE INC

\$369,000
MLS 6708131 Residential
868 Park Drive
Detroit Lakes MN 56501



website: www.AffinityRealEstate.com | email: info@affinityrealestate.com | office: 218-237-3333 | fax: 218-237-3377



\$369,000
 MLS 6708131 Residential
 868 Park Drive
 Detroit Lakes MN 56501



website: www.AffinityRealEstate.com | email: info@affinityrealestate.com | office: 218-237-3333 | fax: 218-237-3377

Affinity
REAL ESTATE INC

\$369,000
MLS 6708131 Residential
868 Park Drive
Detroit Lakes MN 56501